

DRAFT COPY

Please note that this draft copy of
the

2019–2023 Livingston County
Parks & Open Space Plan is
provided for review and public
comment from

February 11 – March 12, 2019

Please respond with comments to:

Livingston County Planning Department, (517) 546–7555 or
planning@livgov.com

TABLE OF CONTENTS

I. INTRODUCTION 1
 Planning Process 2

II. COMMUNITY DESCRIPTION 4
 Regional Setting 4
 Livingston County Character 5
 Livingston County Population and Households 6
 Livingston County Age Distribution 11
 Livingston County Land Use 12

III. ADMINISTRATIVE STRUCTURE 14
 Michigan Enabling Legislation 14
 Parks and Open Space Advisory Committee 14
 Livingston County Foundation 15
 Annual Budget 16
 Volunteers 16
 Community Relationships 17

TABLE OF CONTENTS

IV. INVENTORY OF EXISTING PARKS, NATURAL AREAS AND RECREATION FACILITIES.....19

 Livingston County Public Recreation Areas Map19

 State of Michigan Resources19

 Huron-Clinton Metropark Resources.....24

 Livingston County Park Resources.....26

 Municipal Park Resources28

 Public Recreation Authorities & Facilities34

 Public School Districts.....35

 Non-profit Nature Preserves and Sanctuaries36

 Private Recreation Departments/Associations.....37

 Private and Commercial Recreation Facilities.....37

V. EXISTING LIVINGSTON COUNTY PARKS.....43

LUTZ COUNTY PARK.....43

 Park History and Formation.....43

 General Description of Park.....44

 Primary Service Area.....46

 Site Development Plan.....46

 Accessibility Evaluation51

 Ecological Evaluation53

 MDNR Grant Fund Status55

 Park Photos56

TABLE OF CONTENTS

FILLMORE COUNTY PARK62

 Park History and Formation.....62

 General Description of Park.....63

 Primary Service Area.....65

 Site Development Plan.....65

 Accessibility Evaluation68

 Ecological Evaluation71

 MDNR Grant Fund Status73

 Park Partnerships74

 Park Photos75

VI. DESCRIPTION OF PLANNING AND PUBLIC INPUT PROCESS.....78

 Planning Process78

 Recreation Standards79

 Public Input Process.....80

 Livingston County Parks & Open Space Advisory Committee.....80

 Livingston County Parks & Recreation Opinion Survey.....80

 Survey Results81

 Summary of Survey Results.....88

 Public Comment Period89

 Public Hearings.....89

TABLE OF CONTENTS

VII. GOALS AND OBJECTIVES91

 Policy Statement91

 Goals of the Parks & Open Space Advisory Committee91

 Goals of Lutz County Park94

 Goals of Fillmore County Park95

VIII. ACTION PROGRAM98

IX. APPENDIX102

 Resolution Authorizing The Creation Of The Parks And Open Space Advisory Committee102

 Fillmore County Park Boundary Map.....103

 Fillmore County Park Overall Site Concept104

 Fillmore County Park Fillmore East Concept.....105

 Fillmore County Park Site Development Plan – Enlargement Area 1.....106

 Fillmore County Park Accessibility Review from Ann Arbor Center for Independent Living.....107

 Recreational Classification System.....109

 Survey Question #7.....110

 Public Comment Posting.....111

 Public Comment Press Release.....112

 Summary of Public Comments Received113

 Public Hearing Advertisement – Livingston County Planning Commission114

 Public Hearing Minutes115

TABLE OF CONTENTS

APPENDIX (continued)

Resolution of Support – Livingston County Parks And Open Space Advisory Committee116

Public Meeting Posting For Resolution of Plan Adoption – Livingston County Board of Commissioners117

Livingston County Board of Commissioners Meeting Minutes118

Livingston County Board of Commissioners Resolution of Adoption.....119

MDNR Community Park, Recreation, Open Space and Greenway Plan Checklist – Page #1120

MDNR Community Park, Recreation, Open Space and Greenway Plan Checklist – Page #2121

MDNR Post Completion Self-Inspection Report122

Letters of Transmittal Regarding Adoption of the Plan.....123

I. INTRODUCTION

This 2019 – 2023 Livingston County Parks & Open Space Plan represents an update to the 2012 – 2017 Livingston County Parks & Open Space Plan. The jurisdiction of this recreation plan is Livingston County, specifically Livingston County government owned park land. The plan is not intended to plan for the recreation needs of the local units of government in Livingston County, as more than half of the County’s twenty (20) local units of government have individual park plans addressing parks, recreation, trails, and open space in their jurisdiction.

The purpose of this plan is to guide the parks, open space and recreation decision-making of Livingston County government over the next five years. This plan follows the format required by the Michigan Department of Natural Resources in their publication entitled Guidelines For The Development Of Community Park, Recreation, Open Space and Greenway Plans.

In Livingston County, the Board of Commissioners is the primary decision-making body for parks and open space

planning and the approval of related general fund expenditures. In order to facilitate these decisions, the Board has appointed a twelve-member Advisory Committee called the *Parks and Open Space Advisory Committee*. This Committee has twelve members, which currently include two County Commissioners. The Committee meets bi-monthly or as necessary and makes recommendations to the Board of Commissioners.

The Livingston County Foundation is a Michigan non-profit corporation that was established to receive bequests of land for County parks. The Foundation functions as the primary fiduciary for the two Livingston County parks that are operational and/or under development. The seven (7) person Foundation Board administers the investments of the Foundation and reviews and processes the maintenance and development expenses of each Livingston County park.

Livingston County government currently has one County Park in operation called Lutz County Park and another park under development called Fillmore County Park. Both parks are named for their benefactors who bequeathed the park land to Livingston County.



Opening Day of Lutz County Park, August 2008



Planning Process

The planning process for the development of this 5- year park plan entailed the following three step approach.

1. Background Studies and Surveys

2. Evaluation and Analysis

3. Plan Development and Adoption

Background Studies and Surveys: Much of the work of gathering and updating information for the first phase of this plan was accomplished concurrent with gathering and updating information for a new Livingston County Master Plan. It is a priority of the Livingston County Planning Department to establish a linkage between these two Livingston County documents.

A public internet survey was also initiated during this first phase, as was the collection of information to prepare inventories of existing parks and recreation facilities in Livingston County.

County website and it was e-mailed to all local units of government in Livingston County.

Evaluation and Analysis: This second phase of the planning process entailed evaluation and analysis of the responses gathered through the public internet survey, as well as parks and recreation inventory data and demographics.

Plan Development and Adoption: The third and final phase of the planning process involved drafting a plan based on the information that was gathered and analyzed. The Livingston County Parks and Open Space Advisory Committee was instrumental in this phase of the planning process, as they formulated goals and objectives and determined an implementation plan for this document.

Prior to plan adoption, a public review period for the draft plan was publicized, as was instructions on how to submit comments. This information was published on the Livingston

II. COMMUNITY DESCRIPTION

Regional Setting

Livingston County is located in Southeastern Michigan, the most populous region of Michigan where nearly 50% of the state population resides. Livingston County is one of seven counties in the Metropolitan Planning Organization known as the Southeast Michigan Council of Governments or SEMCOG. Detroit, Michigan has been the historic center of this region and the City's prosperity greatly impacts the economy and identity of Southeast Michigan communities.

Livingston County's regional location has also been described as midway between the state capital of Lansing and the state's largest city of Detroit, or midway between Michigan's largest institutions of higher education, the University of Michigan and Michigan State University. Each of these descriptions has influenced the identity of the County.



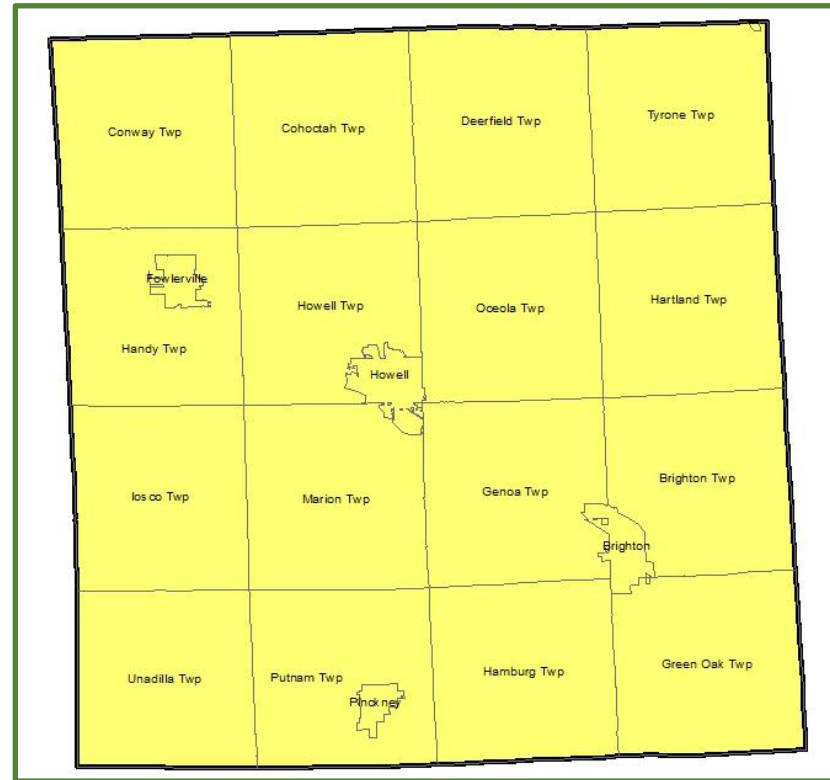
A SEMCOG 2017 estimated population of 189,985, places Livingston County as the 11th most populated county in Michigan. Livingston is bordered on the north by Shiawassee and Genesee counties, on the east by Oakland County, on the south by Washtenaw and Jackson counties, and on the west by Ingham County. Genesee, Oakland, and Washtenaw counties are among the top 10 most populated counties in Michigan.

Livingston County Character

Most residents of Livingston County would say that an imaginary north/south line can be drawn nearly through the middle of the County to illustrate how Livingston County’s character differs between its urbanization in the eastern half and its agricultural farmland in the western half.

There is some truth to this demarcation because nearly half (46%) of the population resides in the southeast quadrant of the County, in the townships of Brighton, Genoa, Hamburg, and Green Oak, and the City of Brighton. It is also true that the majority of the 96,806 acres of farmland in Livingston County lies in the western half of the county in an L-shaped band located along the northern and western County lines in the townships of Unadilla, Iosco, Handy, Conway, Cohoctah and Deerfield.

Livingston County Map



Historically, Livingston County was regionally recognized as a recreation destination with over 75 inland lakes and 20,000+ acres of park and recreation areas that include: 7 State Parks, 2 Huron Clinton Metropolitan Authority “Metro Parks”, and multiple county, city, village and township parks.

Southeast Michigan residents often escaped the congestion of city life for the rural and natural beauty of nearby Livingston County. Numerous metropolitan camps were, and still are present, such as the Detroit Fresh Air Camp (now Camp Chaldean), Detroit Rescue Mission Ministries (Wildwood Ranch) the Girl Scout USA Organization and faith-based camps. Additionally, private cottage communities flourished on the inland lakes.

Rapid population growth since 1970 has transformed this recreation destination into a suburban county where former cottages are now year-round dwellings. Today Livingston County is more often recognized for its commuter lifestyle where according to the Workforce Intelligence Network for Southeast Michigan, 74.8% of the resident population commutes outside of the County to their place of work. The County is traversed by Interstate 96 and U.S. Highway 23 which links County residents to the surrounding job markets of Lansing, Flint, Detroit and Ann Arbor.

Livingston County Population and Households

Livingston County is comprised of twenty local units of government: two cities, two villages, and sixteen townships. The City of Howell located in the center of the County, is the County seat of government and most County offices are located there.

Through the economic recession of the late 2000's and early 2010's, the majority of Livingston County communities did not lose population but continued to grow at a much slower rate than they had previously. This population growth was in sharp contrast to the population loss experienced in many Southeast Michigan communities. The population chart below illustrates that overall, population in Livingston County has grown by 9,028 new residents between 2010– 2017, with the most growth experienced in Oceola Township and a minimal decrease in population experienced in Conway and Iosco Townships as well as the City of Howell and the Villages of Fowlerville and Pinckney.

Livingston County Population Change				
Community	2010 Census Population	2017 Estimated Population	# Population Change	% Population Change
Townships				
Brighton	17,791	18,602	811	4.6%
Cohoctah	3,317	3,436	119	3.6%
Conway	3,546	3,523	-23	-0.6%
Deerfield	4,170	4,192	22	0.5%
Genoa	19,821	20,881	1,060	5.3%
Green Oak	17,476	19,168	1,692	9.7%
Hamburg	21,165	21,213	48	0.2%
Handy	5,120	5,337	217	4.2%
Hartland	14,663	15,490	827	5.6%
Howell	6,702	7,140	438	6.5%
Iosco	3,801	3,582	-219	-5.8%
Marion	9,996	10,771	775	7.8%
Oceola	11,936	14,034	2,098	17.6%
Putnam	5,821	6,076	255	4.4%
Tyrone	10,020	10,816	796	7.9%
Unadilla	3,366	3,463	97	2.9%

Livingston County Population Change				
Community	2010 Census Population	2017 Estimated Population	# Population Change	% Population Change
Cities				
Brighton	7,444	7,899	455	6.1%
Howell	9,489	9,420	-69	-0.7%
Villages				
Fowlerville	2,886	2,763	-123	-4.3%
Pinckney	2,427	2,169	-258	-10.6%
Livingston County				
	180,957	189,985	9,028	5.0%

Source: Southeast Michigan Council of Governments, December 2017
Population and Household Estimates for Southeast Michigan.

Although some Livingston County communities lost population between the 2010 Census and 2017, the number of households remained constant with smaller household occupancy sizes. The Village of Pinckney is the only community that experienced a minimal decrease in number of households. The Livingston County household size decreased from 2.67 in the 2010 Census to 2.6 in 2017 as estimated by the Southeast Michigan Council of Governments (SEMCOG).

Livingston County’s Lutz County Park is in Deerfield Township, which is a rural and more remote agricultural area of Livingston County. The service area of this park is primarily Deerfield, Cohoctah, Oceola and Tyrone Townships within Livingston County. These communities in their entirety represent a total population of 32,478 and 11,628 households. It may be advantageous to expand the marketing and promotion of the park to the more populated communities of Oceola and Tyrone Townships, as well as neighboring communities in Genesee County.

Livingston County Household Change				
Community	2010 Census Households	2017 Estimated Households	# Household Change	% Household Change
Townships				
Brighton	6,415	6,841	426	6.6%
Cohoctah	1,176	1,232	56	4.8%
Conway	1,199	1,230	31	2.6%
Deerfield	1,481	1,578	97	6.5%
Genoa	7,807	8,435	628	8.0%
Green Oak	6,450	7,174	724	11.2%
Hamburg	7,860	8,427	567	7.2%
Handy	1,793	1,900	107	6.0%
Hartland	5,154	5,357	203	3.9%
Howell	2,531	2,749	218	8.6%
Iosco	1,278	1,281	3	0.2%
Marion	3,499	3,879	380	10.9%
Oceola	4,057	4,924	867	21.4%
Putnam	2,166	2,264	98	4.5%
Tyrone	3,528	3,894	366	10.4%
Unadilla	1,286	1,364	78	6.1%

Livingston County Household Change				
Community	2010 Census Households	2017 Estimated Households	# Household Change	% Household Change
Cities				
Brighton	3,603	3,729	126	3.5%
Howell	4,028	4,030	2	0.0%
Villages				
Fowlerville	1,198	1,201	3	0.3%
Pinckney	869	844	-25	-2.9%
Livingston County				
	67,378	72,335	4,957	7.4%

Source: Southeast Michigan Council of Governments, December 2017 Population and Household Estimates for Southeast Michigan.

Fillmore County Park is located in a significantly more populated area of Livingston County, 1-mile north of Grand River Avenue, a major east-west corridor, and mid-way between the cities of Howell and Brighton.

Fillmore County Park will serve the Howell, Brighton and Hartland areas, being centrally located between these school districts. The park abuts the U.S. Census Urbanized Area and it is near the population center of its service area, and of the

County as a whole. The service area includes Oceola, Hartland, Marion, Genoa, and Brighton Townships, and the cities of Howell and Brighton. These communities in their entirety represent a total population of 97,097 and 37,195 households. This service area also encompasses both the Howell Area Parks & Recreation Authority (HAPRA) and the Southeast Livingston County Recreation Authority (SELCRA) recreation authorities.

For the last three decades Livingston County has been one of the fastest growing counties in Michigan. The Southeast Michigan Council of Governments (SEMCOG) produces a new forecast of the region’s future population every 4 to 5 years. In their 2045 forecast they project population at 5 year intervals. The table below shows us the projected population for each of the 20 local governments over a thirty-year span.

Livingston County Population Forecast					
Community	2015 Forecast	2025 Forecast	2035 Forecast	2045 Forecast	%Pop. Change 2015-2045
Townships					
Brighton	18,503	20,579	21,585	21,883	18.3%
Cohoctah	3,430	3,116	3,077	3,142	-8.4%
Conway	3,473	3,166	3,614	3,788	9.1%
Deerfield	4,292	4,337	4,594	5,019	16.9%
Genoa	20,416	25,972	30,999	32,907	61.2%
Green Oak	18,851	20,724	22,082	22,750	20.7%
Hamburg	21,053	22,098	22,645	23,325	10.8%
Handy	5,268	6,533	8,075	8,780	66.7%
Hartland	15,558	17,184	19,201	19,871	27.7%
Howell	9,439	10,221	10,491	11,256	19.2%
Iosco	3,608	3,303	3,280	3,242	-10.1%
Marion	10,418	12,248	12,507	13,071	25.5%
Oceola	13,204	16,615	19,646	20,327	53.9%
Putnam	6,003	5,781	6,106	6,333	5.5%
Tyrone	10,793	11,064	11,906	12,486	15.7%
Unadilla	3,383	3,279	3,896	4,246	25.5%

Livingston County Population Forecast					
Community	2015 Forecast	2025 Forecast	2035 Forecast	2045 Forecast	%Pop. Change 2015-2045
Cities					
Brighton	7,478	11,147	11,595	12,127	62.2%
Howell	9,439	10,221	10,491	11,256	19.2%
Villages					
Fowlerville	2,674	2,643	3,138	3,144	17.6%
Pinckney	2,226	2,046	2,058	2,845	27.8%
Livingston County					
	187,287	210,770	230,740	241,566	29.0%

Source: Southeast Michigan Council of Governments, Southeast Michigan 2045 Forecast Summary, December 2017.

It is projected that the communities of Cohoctah and Iosco Townships will lose population over this span of time, while the City of Brighton and Handy and Genoa Townships will experience the largest percent growth in population, with over 60% growth. Overall, Livingston County is expected to have over 200,000 residents by the year 2025. It is projected that the County will gain 54,279 new residents over the thirty-year span with a percent population change of 29.0% change.

Livingston County Age Distribution

According to available age demographics, Livingston County should be developing parks and recreation with the needs of young children (under 5) and senior citizens in mind. Although age estimates between the 2010 Census and the 2015 American Community Survey (ACS) show a shrinking Under 18 population, SEMCOG forecasts that between 2015 and 2045, the Under 18 population and particularly the Under 5

Livingston County Senior and Youth Populations					
Pop. Group	2010 Census	ACS 2015	Change 2010 - 2015	Percent Change 2010 - 2015	SEMCOG 2045 Forecast
65 and over	21,644	25,894	4,250	19.6%	60,054
65 to 84	19,153	23,283	4,130	21.6%	46,348
85 and over	2,491	2,611	120	4.8%	13,706
Under 18	46,237	43,664	-2,573	-5.6%	45,286
5 to 17	36,313	34,233	-2,080	-5.7%	34,232
Under 5	9,924	9,431	-493	-5%	11,054

population (24.7%), will continue to grow in Livingston

County. This is contrary to the projections for most of the other Michigan counties in the Southeast Michigan region; Washtenaw and Livingston Counties are the only communities projecting growth.

Livingston County Population Forecast By Age					
Age Group	2015 Forecast	2025 Forecast	2035 Forecast	2045 Forecast	% Pop. Change 2015-2045
Under 5	8,863	12,335	12,555	11,054	24.7%
5 – 17	32,686	27,866	34,380	34,232	4.7%
18 – 24	16,346	14,229	10,727	15,146	-7.3%
25 – 54	72,339	80,556	90,672	95,220	31.6%
55 – 64	28,457	30,832	23,796	25,860	-9.1%
65 – 84	25,462	40,648	50,200	46,348	82%
85+	3,134	4,304	8,410	13,706	337.3%
Total	187,287	210,770	230,740	241,566	29%

More dramatic than the growth in child population is the rapid rate at which Livingston County is aging, with an age 65 and over population segment that comprised 14% or 25,894 residents in 2015 among a total county population of 184,591, according to 2015 American Community Survey data from the U.S. Census Bureau.

This population figure is expected to climb to 25% of our county population (241,566) by 2045 according to the SEMCOG 2045 Regional Forecast. From a regional perspective, SEMCOG forecasts that Washtenaw (179.5%) and Livingston counties (177.6%) will experience the highest percent change in the age 65 and older population between 2010 and 2045, among the seven counties that comprise the Southeast Michigan region.

Livingston County Land Use

Generalized land use data from the Southeast Michigan Council of Governments reveals the following snapshot of land use in Livingston County:

Livingston County 2008 Land Use		
Land Use	Acres	Percent
Agricultural	98,831.4	26.4%
Single-family residential	194,132	51.8%
Multi-family residential	675.5	0.2%
Commercial	5,556.7	1.5%
Industrial	9,106.9	2.4%
Governmental/ Institutional	6,732.4	1.8%
Park, recreation, open space	33,332	8.9%
Airport	489.2	0.1%
Transportation, Communication, Utility	12,915.1	3.4%
Water	12,846	3.4%
Total	374,627.2	100%

Source: Southeast Michigan Council of Governments SEMCOG 2008 Land Use dataset equals 99.9%

Note:

Parks, recreation, and open space is the third largest land use in Livingston County (8.9%). Of the total 33,332 acres, an estimated 29,500 acres of land is dedicated to state, metropark, county, city, village and township parks. The natural beauty of parks and recreation land areas as well as undeveloped open space lands, have drawn new residents to Livingston County for decades.

The abundant water features of Livingston County comprise another 3.4% of total land area. Over 75 inland lakes with associated streams and wetlands, and three major river courses distinguished by the Huron, Shiawassee and Red Cedar rivers, have also attracted people to vacation and recreate in Livingston County for generations.

III. ADMINISTRATIVE STRUCTURE

Michigan Enabling Legislation

Parks in Livingston County are established under Public Act 156 of 1917 (MCL 123.51 *et seq*), Recreation and Playgrounds. This Act allows any city, village, county or township to operate a system of public recreation and playgrounds, acquire land or facilities, expend funds for operation, etc. The governing body established by this act is a recreation board, namely the Livingston County Parks and Open Space Advisory Committee.

Parks and Open Space Advisory Committee

A Livingston County Board of Commissioners resolution dated January 18, 2005 authorized the creation of the Livingston County Parks and Open Space Advisory Committee consisting of no less than 7 members and no more than 11 members (the size of this committee was later revised to no more than 12 members on March 2, 2015). The resolution also stated: 1.) committee members shall be appointed by the Chairman of the Board of Commissioners after receiving recommendations from the Chairman of the Advisory Committee and will be

subject to the affirmation of the Board of Commissioners; 2.) administrative support for the Committee shall be provided by a Department chosen by the County Administrator; 3.) the committee shall undertake activities especially related to the maintenance and development of park and open space land in Livingston County as assigned from time-to-time by the Board of Commissioners; and 4.) initial referral to the committee shall be the Lutz Park and Conference Center. *See Appendix for a copy of resolution.*

The creation of the Livingston County Parks and Open Space Advisory Committee was prompted by a then-pending 2004 bequest of 300 acres of land to Livingston County government to be developed as the first Livingston County Park (a.k.a. Lutz County Park named after benefactor Owen Lutz).

Committee Members and Administrative Support: The twelve members of the Livingston County Parks and Open Space Advisory Committee currently include:

- Three (3) Livingston County Commissioners, two of which serve as Chair and Vice-Chair of the committee
- The Livingston County Drain Commissioner

- The Director of Livingston County Facility Services
- Two (2) members of the Livingston County Planning Commission
- One (1) member from the Livingston Land Conservancy
- One (1) retired engineer from the Huron Clinton Metropark Authority
- One (1) county resident at large
- One (1) township government representative
- One (1) member from the Livingston County Historical Society

Administrative support for the committee is provided by the Livingston County Planning and Facility Services departments.

The Livingston County Parks and Open Space Committee holds bi-monthly meetings or as necessary and makes recommendations to the Board of Commissioners. Examples of Committee topics of discussion and review include: park development; park maintenance; potential acquisitions; future improvements; potential or current grants; and many other subjects pertinent to county parks, recreation and open space.

The Livingston County Board of Commissioners has final authority on most decisions of this committee including the acceptance of grants and bequeathed land. The Livingston County Foundation has authority to commit funds for parks and recreation.

County Staff:

Livingston County does not have staff that is 100% dedicated to parks and recreation. County staff members are utilized from various County departments, although primarily from the Livingston County Facility Services and Planning Departments. Facility Services is responsible for maintaining the buildings and grounds of the parks, and the Livingston County Planning Department is responsible for meeting organization, grant writing and administration, park events and this five-year Parks and Open Space Plan.

Livingston County Foundation

As mentioned in the Introduction of this plan, the Livingston County Foundation is a Michigan non-profit corporation that was established to receive bequests of land for County parks. The Foundation functions as the primary fiduciary for the two

Livingston County parks that are operational and/or under development. The seven (7) person Foundation Board administers the investments of the Foundation and reviews and processes the maintenance and development expenses of each Livingston County park.

The Foundation meets quarterly or as needed. The Facility Services Department Director serves as a member of the Board and the Planning Department Director provides a report at each meeting.

Annual Budget

The following Livingston County Foundation 2018 Financial Summary reflects the projected 2019 budget for Livingston County parks operation and maintenance; there are currently no annual expenses for programming and capital investments are noted at the bottom of the chart.

Livingston County Foundation 2018 Financial Summary	
Balance 12/31/17	\$255,691.35
Revenue	
Lease – Lutz Property	\$22,546.00
Lease – Fillmore Property	\$3,850.00
Return on Investment	\$(22,787.55)
Total Revenue	\$3,608.45
Expenses	
Maintenance – Lutz Property	\$4,285.36
Maintenance – Fillmore Property	\$1,060.70
Advisory Fees	\$1,255.51
Tax Preparation	\$600.00
Total Expenses	\$7,201.57
Balance 12/31/18	\$252,098.23

Note: The Foundation has committed \$95,948 for the development of Fillmore County Park. The 12/31/18 balance is not reflective of this commitment.

Volunteers

Although the Parks and Open Space Advisory Committee consists of several volunteer committee members (that are not

County employees), volunteers from the public have not been consistently utilized. At the opening day ceremony of Lutz County Park, individuals and groups volunteered to help with future projects, and their names are being kept on file.

Likewise, the Parks & Open Space Advisory Committee will gather volunteer names at the summer 2019 park dedication and opening of Fillmore County Park. Currently, there are two residents from the subdivision abutting the Fillmore County Park property that regularly attend Parks & Open Space meetings and relay the information to their neighbors.

In Section VII Goals & Objectives of this plan, there is an objective for both Lutz County Park and Fillmore County Park to “develop a community volunteer program to assist in park maintenance and provision of park activities.” This objective is slated for implementation within the 2019 – 2023 time frame of this plan.

Community Relationships

Livingston County has cultivated several park and recreation partnerships with both private organizations and public agencies. Following is a summary of these partnerships:

Private Organizations:

- Camp Chaldean - Periodic visits with the camp manager and representatives of the Chaldean Catholic Church diocese, has cultivated a good relationship for future recreational collaboration between our adjacent park properties.(Fillmore)
- Howell Area Parks & Recreation Authority (HAPRA) and the Southeast Livingston County Recreation Authority (SELCRA) - These two parks and recreation authorities have a memo of understanding with the Livingston County Parks & Open Space Committee for the programming of sports activities at Fillmore County Park once Phase I is complete.

Public Agencies:

- Deerfield Township – Communication with representatives of the home community of Lutz County Park in on-going. They are kept informed of park activities.
- Genoa Township – Representatives of the home community of Fillmore County Park have been

involved in the master planning of the park, as well as site plan review.

- Municipal partners – Three (3) municipal partners within the primary service area of Fillmore County Park have financially contributed towards the match portion of Livingston County’s Land and Water Conservation Fund grant. These partners include: Genoa and Marion Townships and the City of Howell.
- The Michigan Department of Environmental Quality (MDEQ) – Communication and collaboration regarding access and hunting issues relevant to the adjacent Lutz County Park and Oak Grove Game area.
- Livingston County Departments – In-kind services for Fillmore County Park have been pledged by several Livingston County Departments such as: The Sheriff Department; Drain Commission; and Road Commission. The Facility Services and Planning Departments handle all maintenance and administrative functions of the County Parks.
- Livingston County Foundation – This 503 (c)(3) foundation acts as the fiduciary for Livingston County Parks

IV. INVENTORY OF EXISTING PARKS, NATURAL AREAS AND RECREATION FACILITIES

Livingston County Public Recreation Areas Map

To map the county-wide scope of parks and recreation assets in Livingston County, the Planning and GIS departments recently developed an interactive, web-based map that is available on the Livingston County website. The map is called [Livingston County Public Recreation Areas](#), and it allows a viewer many search options such as ‘ADA compliant parks’ and ‘Parks with Playgrounds.’ A multitude of resource information is available by clicking on any park; information such as: park acres; park address; park website; and the availability of amenities such as restrooms, ADA compliant trails, camping facilities, parking, etc.

Because Livingston County’s primary service area is the entire geographic area of Livingston County, the following parks and recreation inventory is county-wide. Inventory data was collected from web resources and recreation plans that are on-file with Livingston County Planning Department.

State of Michigan Resources

State Parks and Game Areas in Livingston County		
Name of Park	Acreage	Location in County
Pinckney State Recreation Area	3,245 of 11,000	Putnam Township Unadilla Township
Island Lake State Recreation Area	4,000	Green Oak Township
Brighton State Recreation Area	4,947	Hamburg Township Genoa Township
Mike Levine Lakelands Trail State Park	N/A 22 miles	Hamburg, Putnam, Unadilla Townships, Village of Pinckney
Gregory State Game Area	2,705	Putnam Township Unadilla Township
Oak Grove State Game Area	2,453	Cohoctah Township Deerfield Township
Unadilla Wildlife Area	1,000± of total 1,163	Unadilla Township
Total	18,350	

Source: State Parks Information: (800) 44-PARKS or (800) 447-2757

Livingston County has an abundance of State of Michigan recreational resources that include three (3) recreation areas,

one (1) linear state park, two (2) game areas and one (1) wildlife area totaling 18,350 acres.

Pinckney State Recreation Area	
8555 Silver Hill Pinckney, MI 48169 (734) 426-4913 TDD (517) 335-4623	
This 11,000 acre recreation area spans two counties (Livingston and Washtenaw) and is comprised of three major use areas: Silver Lake day use area, the Bruin Lake modern campground, and the Halfmoon day use facility.	
Amenities	Description
Camping	Bruin Lake offers 161 sites of modern camping, rustic camping is available at Crooked Lake (25 sites) and Pinckney-Blind Lake (10 sites), a cabin and yurt are available at Bruin Lake and one yurt is available at Pinckney-Glenbrook.
Beaches	Day-use beach at Halfmoon Lake and Silver Lake. A beach house with showers is available at Silver Lake Day Use Area. Bruin Lake is only open to campers and their visitors.
Trails	Over 40 miles of multi-use trails open to hikers and mountain bikers. Trails all begin at Silver Lake

	Beach. The 17.4 Pinckney Potawatomi Mountain Bike Trail is partially groomed in the winter.
Equestrian	Eight mile equestrian trail
Boating	Improved boat launches on Bruin, Halfmoon, South, North, Joslin and Portage lakes. Unimproved ramps located on Crooked, Gosling and Hiland Lakes. Boat rentals available at Silver Lake beach & picnic area.
Fishing	Fishing pier on Silver Lake and Crooked Lake. Shore fishing on Silver Lake.
Hunting	Restricted in safety zones around developed use areas. Seasonal restrictions from April 1 to September 14. Target shooting prohibited.
Shelters	Two picnic shelters are available through reservation at Half Moon Lake. Additional picnic areas at Silver Lake and Halfmoon Lake beaches.

Source: Recreation Search, Michigan Department of Natural Resources website. <http://www.michigandnr.com/parksandtrails/default.aspx>

<p align="center">Island Lake State Recreation Area</p> <p align="center">6301 Kensington Road Brighton, MI 48116 (810) 229-7067 TDD (517) 335-4623</p> <p>This State Recreation Area is 4,000 acres and surrounds more than five miles of the Huron River and four lakes. The park bills itself as an up-north experience without leaving southeast Michigan.</p>	
Amenities	Description
Camping	Organization camp for youth groups, 2 canoe only campsites
Beaches	Two beaches are available for day use, one at Kent Lake, and one at Spring Mill Pond. Each beach has modern toilets vending machines, sand volleyball courts and grills. The Kent Lake beach also has a playground, horseshoe pits and nearly ball field.
Trails	Over 18 miles of trails for hiking, biking, running, and hunting, including 4 miles of paved trail for biking and 14 miles suitable for mountain biking.
Boating	Canoe, rowboat and paddleboat rentals available. No public launch. Kayak launch to Huron River.

Hunting	Hunting for all species following state regulations between September 15 and March 31. The park is also open to trapping.
Fishing	Four lakes and the Huron River offer a variety of fishing opportunities. A universally accessible fishing pier is available at Island Lake. Ice fishing is allowed in winter.
Rustic Cabins	Two available year round, sleep 20 persons each
Shelters	Island Lake has seven shelters and three additional shelters are located throughout the recreation area. Shelters are available for rent.
Snowmobiling	Allowed only on unpaved trails
Shooting Range	Forty 25-yard, 50-yard, and 100-yard shooting stations; also skeet, trap, and sporting clays. Fully handicap accessible.
Balloon Port	Only one in Michigan State Park system

Source: Recreation Search, Michigan Department of Natural Resources website. <http://www.michigandnr.com/parksandtrails/default.aspx>

<p>Brighton State Recreation Area</p> <p>6360 Chilson Road Howell, MI 48843 (810) 229-6566 TDD (517) 335-4623</p> <p>This 4,947 acre park has frontage on more than a dozen lakes and ponds. The area has a combination of high, irregular ranges of hills, interspersed with a number of attractive lakes.</p>	
Amenities	Description
Camping	144 site modern campground, two rustic campgrounds with 25 sites each, rustic equestrian campground with 17 sites, organizational youth campground, 5 rustic cabins
Beaches	One at Bishop Lake that is universally accessible with beach house, beach area, picnic shelters and a sand volleyball court, vending machines.
Trails	17 miles of trails in various length, 18 miles of equestrian trail, 2 mountain bike trails
Boat Rental	Canoes, kayaks, paddleboats and rowboats available for rent.
Boating	Boat launches at Chilson, Appleton, Bishop, and Shanango Lakes. An EZ launch accessible transfer system is also available on Bishop Lake.
Fishing	Allowed in lakes with boat launches, fishing pier

Hunting	Allowed in-season
Winter Activities	Ungroomed cross-country ski trails, winter camping
Cabins	Available by reservation; one with a capacity of 20, four with a capacity of 8, yurt by reservation.
Shelters	Four picnic shelters at Chilson Pond, and two ADA shelters at the Bishop Lake day-use area.
Equestrian	Riding stable, rustic campground, horse staging areas, 19 miles of equestrian trails. ADA – accessible amenities, riding lessons and guided trail rides.
Disc Golf	Disc Golf course
Water Park	Jump Island on Bishop Lake is an inflatable water park experience

Source: Recreation Search, Michigan Department of Natural Resources website. <http://www.michigandnr.com/parksandtrails/default.aspx>

Mike Levine Lakelands Trail State Park

8555 Silver Hill Road

Pinckney, MI 48169

(734) 426-4913

TDD (517) 335-4623

The Mike Levine Lakelands Trail State Park is part of the Great Lake-to-Lake Trail that stretches from South Haven to Port Huron. The trail starts at Hall Road in Livingston County and extends to Hawkins Road in Henrietta Township in Jackson County.

This multiple-use trail is suitable for biking, walking, running and equestrian use. The paved section of trail is located between Hall Road in Hamburg Township and M-36 just west of Pinckney. The remaining trail surface consists of compacted limestone and crushed slag.

Amenities	Description
Trails	22 miles of linear trail which passes through woods, pastures, picturesque wetlands and offers views of the beautiful Huron River.
Trailhead Locations	Stockbridge Trailhead (M-52 and S. Center St, Stockbridge), Gregory Trailhead (188 Main St, Gregory), Pinckney Trailhead (499 Pearl St, Pinckney), Pettysville Trailhead (Pettysville Road and M-36, Hamburg) and Hamburg Trailhead (10699 Hamburg Road, Hamburg)

Biking	The paved section of trail is best for biking. This segment lies between Hall Road in Hamburg to M-36 just west of Pinckney
Cross Country Skiing	Cross country skiing is allowed, although trail is not groomed
Equestrian	Equestrian users may use the south side of the 22 mile trail. The trail connects to an additional 13 miles of riding in Pinckney Recreation Area.
Prohibited	Motorized vehicles and hunting

Source: Recreation Search, Michigan Department of Natural Resources website. <http://www.michigandnr.com/parksandtrails/default.aspx>

Gregory State Game Area

Putnam and Unadilla Townships

Area Headquarters: Waterloo DNR Wildlife Office

13578 Seymour Road, Grass Lake, MI 49240

(517) 522-4097

The Gregory State Game Area contains 2,705 acres of publicly owned lands managed for wildlife habitat, wildlife watching and hunting.

Parking	13 prepared parking lots, 2 rustic shoulder-side lot
Boating	No boat ramps, 2 rustic or canoe drop-in sites on Duck Lake and nearby stream

Oak Grove State Game Area

Cohoctah and Deerfield Townships

Area Headquarters: Rose Lake DNR Wildlife Office

8562 East Stoll Road, East Lansing, MI 48823

(517) 641-4903

The Oak Grove State Game Area contains 2,453 acres of publicly owned lands managed for wildlife habitat, wildlife watching and hunting.

Parking	8 prepared parking lots, 1 rustic shoulder-side lot
Boating	1 boat ramp on Indian Lake, 1 rustic or canoe drop-in on Bogue Creek

Unadilla State Wildlife Area

Unadilla Township

Area Headquarters: Waterloo DNR Wildlife Office

13578 Seymour Road, Grass Lake, MI 49240

(517) 522-4097

The Unadilla State Wildlife Area is located in both Livingston and Washtenaw Counties. The 1,163 acres of publicly owned lands are managed for wildlife habitat, wildlife watching and hunting.

Parking	6 prepared parking lots
Boating	No boat ramps, rustic or drop-in boating locations

Source: Summary List of State Wildlife/Game Areas of the Michigan Department of Natural Resources (DNR)

Huron-Clinton Metropark Resources

Livingston County is fortunate to have two regional Metroparks located within the County; Kensington and Huron Meadows Metroparks. Kensington Metropark is the larger park of the two with 4,486 acres that straddle the Livingston/Oakland County lines. Huron Meadows contains 1,573 acres of park land located in Green Oak Township.

Huron-Clinton Metroparks in Livingston County		
Name of Park	Acreage	Location in County
Kensington	522 of 4,486	Brighton Township Green Oak Township (primarily in Oakland County)
Huron Meadows	1,573	Green Oak Township
Total	2,095	

Kensington Metropark	
4570 Huron River Parkway Milford, MI 48380 (810) 227-8910	
This 4,486 acre park is the largest Metropark in the system. The park is situated on the Upper Huron River and contains most of the dammed, 1,200-acre Kent Lake. A trail connects the park to another Livingston County recreational resource, Island Lake State Recreation Area to the south.	
Amenities	Description
Beaches	Swimming and splash pad at Martindale Beach
Trails	13.55 miles of hike-bike trails, 7 miles of nature trails, 6 miles of rustic trails, 17 miles of equestrian trails, 11 miles of cross country ski trails, 2 miles

	of mountain bike trails and 17 miles of other pathways.
Boating	3 public canoe/kayak launches, Island Queen ferry boat on Kent Lake
Boat Rental	Paddleboats, pedal boats, kayak, canoe and row boat rental available at Maple Beach
Fishing	There are 5 fishing platforms in park
Winter Activities	Skiing (11 miles of trail), ice skating (2 rinks), sledding, and tobogganing
Shelters	18 picnic shelters located throughout park
Equestrian	17 mile of equestrian trails
Playgrounds	20 playgrounds located throughout park
Farm Center	Petting farm and educational center
Nature Center	Kensington Nature Center
Sand Volleyball	8 courts throughout park
Baseball Fields	7 baseball fields
Golfing	18 hole golf course, disc golf course
Camping	Group camp with 380 acres of rustic tent camp area

Source: Huron –Clinton Metroparks Community Recreation Plan, 2018-2022

<p>Huron Meadows Metropark</p> <p>8765 Hammel Road Brighton, MI 48116 (734) 426-8211</p> <p>This 1,573 acre park is situated on Maltby Lake in Green Oak Township. The park is used for hiking, fishing, paddling, skiing, picnic outings and golf. Cross country skiing has become an extremely popular activity at this park due to the extensive, well-maintained trails.</p>	
Amenities	Description
Trails	9.45 miles of rustic trails, 12.67 miles of cross country ski trails and 5.12 miles of other pathways
Boating	1 kayak/canoe launch on the Huron River, non-motorized boats allowed on Maltby Lake
Fishing	2 fishing platforms in park, ice fishing as conditions permit
Winter Activities	3 levels of Nordic ski trail, ski center same as golf center, ski rentals available
Shelters	3 picnic shelters, reservations available
Playgrounds	2 playgrounds
Sand Volleyball	2 courts throughout park
Baseball Fields	1 baseball field

Golfing	18 hole golf course, golf center and driving range
Soccer	1 soccer field in park
Orienteering	The Southern Michigan Orienteering Club (SMOC) has installed a 26 permanent checkpoint orienteering course at Huron Meadows.

Source: Huron –Clinton Metroparks Community Recreation Plan, 2018-2022

Livingston County Park Resources

Livingston County Government has two public parks; Lutz County Park located in the northern tier of the County in Deerfield Township and Fillmore County Park that is more centrally located in the County within Genoa Township. A 2.4 acre Countryside Veterinary Dog Park is also located on county grounds at the West Livingston County Government complex, however, this park is operated by the Howell Area Parks & Recreation Authority.

The grounds surrounding the historic Livingston County Courthouse in the City of Howell downtown are also utilized as for concerts, weddings, community events and informal downtown leisure.

Livingston County Parks		
Name of Park	Acreage	Location in County
Lutz County Park	300	Deerfield Township
Fillmore County Park	198	Genoa Township
Total	498	

Lutz County Park	
Lutz Road north of Cohoctah Road Linden, MI 48451 (517) 546-7555, Livingston County Planning Department (517) 546-6491 Livingston County Facilities Services Department This 300 acre park was bequeathed to Livingston County in 2005 by Owen Lutz. In 2008, 100 acres of passive recreation use was opened to the public. Park hours are dawn to dusk.	
Amenities	Description
Trails	1.3 mile trail system provides opportunities for users to experience high-quality natural areas, scenic views, and wildlife and its habitat while at the same time passing by farm fields.
Picnic Tables	1 picnic area is available along the trail
Benches	Benches are provided at various locations along the trail for rest and viewing nature

Trailhead	The trailhead area contains gravel surfaced parking, a portable restroom, bench and trailhead display.
Geocaching	Several geocaches are hidden in the park, see park website for free permit application
Night-time Photography	The park has no artificial lighting and night-time access to the park can be arranged for photography groups
Other	Lutz County Park is adjacent to Oak Grove State Game Area creating a larger contiguous expanse of acreage for the preservation of natural features, wildlife habitat and the South Branch of the Shiawassee River.

Source: Livingston County Planning Department and Livingston County website, <https://www.livgov.com/parks/Pages/Lutz-Park.aspx>

Fillmore County Park

Corner of McClements Road and Kellogg Road

Brighton, MI 48116

(517) 546-7555, Livingston County Planning Department

(517) 546-6491 Livingston County Facilities Services Department

This 198 acre park was bequeathed to Livingston County in 2006 by Raymond Fillmore. Phase I of park development is expected to open to public recreation use in the summer of 2019. Park hours will be dawn to dusk.

Amenities	Description
Trails	5 K trail for running and walking
Trailhead	Trailhead with parking, restroom and park information
Multi-purpose Sports Field	A large multi-purposed sports field will accommodate soccer, baseball, softball or other forms of play

Source: Livingston County Planning Department and Livingston County website, <https://www.livgov.com/parks/Pages/Fillmore-Park.aspx>

Municipal Park Resources

Most of sixteen (16) townships, two (2) villages and two (2) cities in Livingston County have public parks that provide a variety of uses from nature preserves, equestrian use, to parks with playgrounds.

Township Parks in Livingston County		
Name of Park	Acreage	Location in County
Northeast Quadrant		
Deerfield Hills	412	Deerfield Township
Spranger Field	21.79	Hartland Township
Epley Park	3	Hartland Township
Winegarner Field	9.23	Hartland Township
Heritage Park	64.86	Hartland Township
Settlers Park	117.69	Hartland Township
Oceola Township Athletic Fields and Township Playground	13	Oceola Township
Chemung Hills Golf & Banquet Center	151	Oceola Township
Northeast Quadrant		
Cohoctah Township Park	40	Cohoctah Township

2019 – 2023 LIVINGSTON COUNTY PARKS & OPEN SPACE PLAN

Township Parks in Livingston County		
Name of Park	Acreeage	Location in County
Southwest Quadrant		
Township Hall Playground	.5	Unadilla Township
Unadilla Township Community Park	1.6	Unadilla Township
Marion Township Park #1	9.39	Marion Township
Jack Lowe Memorial Park	24	Marion Township
Putnam Township Square	1.6	Putnam Township
Southeast Quadrant		
Manly Bennett Park	384	Hamburg Township
Genoa Township Athletic Fields and Playground	46.10	Genoa Township
Colman Park	11.65	Green Oak Township
Sunset Park (proposed)	N/A	Brighton Township
Total	1,311.41	

Source: Livingston County Planning Department, Township Recreation Plans, and Livingston County Public Recreation Areas Map, <https://livgov.maps.arcgis.com/apps/webappviewer/index.html?id=d5394b61f9c64d10ab6104b91ead9da3>

City and Village Parks in Livingston County		
Name of Park	Acreeage	Location in County
Argyle Street Park	.2	City of Howell
Baldwin Park	.8	City of Howell
Paul Bennett Field	1.8	City of Howell
City Boat Launch	1.5	City of Howell
Countryside Veterinary Dog Park	2.4	City of Howell
Howell City Park	22.8	City of Howell
Lakeside Park	.2	City of Howell
Page Athletic Field	10	City of Howell
Don Miller Park	.2	City of Howell
McPherson Park	.3	City of Howell
Dr. Louis May Park	.2	City of Howell
Parker Skate Park	.2	City of Howell
Rolling Oaks Park	.2	City of Howell
West Street Park	.5	City of Howell
Meijer Park	5	City of Brighton/SEL CRA
Millpond Park	1	City of Brighton
Fowlerville Community Park	30	Village of Fowlerville
Centennial Park	2.5	Village of Fowlerville
Loy Bond Memorial Park	3.5	Village of Pinckney
Total	83.3	

Source: Livingston County Planning Department, Township Recreation Plans, and Livingston County Public Recreation Areas Map, <https://livgov.maps.arcgis.com/apps/webappviewer/index.html?id=d5394b61f9c64d10ab6104b91ead9da3>

Following are brief descriptions of the larger, twenty (20) acres or greater, public municipal parks listed in the previous tables.

<p>Deerfield Hills Corner of Green Road and Cohoctah Road Linden, MI 48451 (517) 546-8760, Deerfield Township Hall</p> <p>Deerfield Hills is a 412 acre nature area owned by Deerfield Township. The park has frontage on Hoisington and Howe Lakes, as well as Ore Creek.</p>	
Amenities	Description
Trails	4.4 miles of trails for pedestrians and a .7 mile equestrian trail
Trailhead	Trailhead with parking, restroom and park information
Fishing Pier	A handicapped accessible fishing pier is available on Howe Lake. This doubles as a canoe/kayak launch

<p>Spranger Field 3205 Hartland Road Hartland, MI 48353 (810) 632-7498, Hartland Township Hall</p> <p>Spranger Field is a 21.79 acre park that contains four (4) softball/baseball diamonds with associated facilities.</p>

<p>Heritage Park 12439 Highland Road Hartland, MI 48353 (810) 632-7498, Hartland Township Hall</p> <p>Heritage Park is a 64.86 acre park with athletic fields and family leisure and play areas.</p>	
Amenities	Description
Athletic Fields	Athletic fields for soccer and lacrosse
Pavilion	Pavilion with concession area, restrooms, and doggie fountain. Reservations available.
Play Ground	Playscape for younger children

Settlers Park

2655 Clark Road

Hartland, MI 48353

(810) 632-7498, Hartland Township Hall

Settlers Park is a 117.69 acre park with walking, biking, picnicking and play facilities.

Amenities	Description
Trail	1.2 mile loop trail
Mountain Biking	2 mile mountain bike path
Pavilion	Pavilion, reservations available. Restrooms and doggie fountains located at pavilion.
Play Ground	Playscape for younger children

Oceola Township Athletic Fields and Playground

1577 N. Latson Road

Howell, MI 48843

(517) 546-0693, Oceola Township Hall

Oceola Township Athletic Fields and Playground contain soccer fields, walking path and a playground area.

Amenities	Description
Athletic Fields	Twelve (12) youth sized athletic fields (differing sizes depending on age)
Play Ground	Playground adjacent too Township Hall
Trails	Walking path

Chemung Hills Golf & Banquet Center

3125 Golf Club Road

Howell, MI 48843

(517) 546-4230

Chemung Hills was established in 1927 and it is one of the oldest golf courses in Livingston County. The golf course and banquet center is now a public facility owned by Oceola Township.

Amenities	Description
Golf Course	18-hole golf course
Grill Room	Pub-style golf dining
Banquet Room	Event seating up to 275, reservations.

Cohoctah Township Park

1000 W. Allen Road

Howell, MI 48855

(517) 546-0655, Cohoctah Township Hall

Cohoctah Township Park is a 40 acre equestrian park.

Amenities	Description
Equestrian Arena	5 acre arena for residents and area 4-H clubs

Jack Lowe Memorial Park

2877 Coon Lake Road (adjacent to the Township Hall)

Howell, MI 48843

(517) 546-1588, Marion Township Hall

Adjacent to the Marion Township Hall is a 24 acre park named in memory of Jack Lowe, a long-serving Marion Township Planning Commissioner

Amenities	Description
Disc Golf	18-hole disc golf course
Picnicking	Gazebo available for rentals and picnicking

Manly Bennett Park

10405 Merrill Road

Hamburg, MI 48139

(810) 231-1000, Hamburg Township Hall

This 384 acre park is located along both the east and west sides of Merrill Road, adjacent to the Hamburg Township municipal office complex.

Amenities	Description
Sports Fields	Two football practice fields that also accommodate rugby, basketball court, four baseball, four T-ball fields, and 8 full-size soccer fields that can be reconfigured to many smaller ones for junior leagues.
Picnicking	Two pavilions
Playground	Playground areas
Trails	Hiking and biking trails
Golf	Disc golf course
Volleyball	Sand volleyball court
Other	Model airplane runway/flying field, restroom, concessions

Genoa Township Athletic Fields and Playground

2911 Dorr Road (adjacent to the Township Hall)

Brighton, MI 48116

(810) 227-5225, Genoa Township Hall

This 46.10 acre park is adjacent to Genoa Township Hall.

Amenities	Description
Sports Fields	2 full-size, lighted, 11v11 athletic fields
Picnicking	Picnic area, shelter and restroom
Trail	.66 mile trail
Playground	Three (3) playgrounds with water misting feature
Winter Activities	Sledding and tobogganing on sled hill

Howell City Park

Corner of Barnard and Thompson streets

Howell, MI 48843

(517) 546-0693, Howell Area Parks & Recreation

This 22.8 acre park is owned by the City of Howell and has extensive Thompson Lake frontage. The Howell Area Parks & Recreation Authority is contracted to operate and manage the Howell City Park and the boat launch.

Amenities	Description
Beach	Seasonal swimming
Boat Launch	Off of Roosevelt Street
Playgrounds	Two (2) playground facilities
Sports Fields	Softball and volleyball
Picnicking	Shelters and picnic tables available
Winter Activities	Tobogganing, sledding, ice skating

Fowlerville Community Park 445 N. Grand St. Fowlerville, MI 48836 (517) 223-3771, Fowlerville Hall The Village of Fowlerville owns this 30 acre park that serves the Fowlerville community.	
Amenities	Description
Trail	1 mile walking track
Playground	Playground facility
Sports Fields	Four (4) multi-purpose and three (3) ball diamonds
Basketball	Two (2) basketball courts
Tennis	Two (2) tennis courts
Picnicking	Three (3) Picnic Shelters

In summary, the public park offerings in Livingston County include: State Parks & Game Areas; Huron-Clinton Metroparks; Livingston County Parks; and Municipal Parks that include Township, City and Village parks. The total number and acreage of public parks is represented in the following table.

Livingston County Public Park Totals		
Type of Park	Number of Parks	Total Acreage
State Parks and Game Areas	7	18,350
Huron-Clinton Metroparks	2	2,095
County Parks	2	498
Municipal Parks (Township, City, Village)	37	1,394.71
Total	48	22,337.71

Note: Additionally, there is 22 miles of linear public park land in the Mike Levine Lakelands Trail State Park.

Public Recreation Authorities & Facilities

There are two recreation authorities in Livingston County that operate and maintain much of the public recreational resources in the Howell and Brighton areas.

The Howell Area Parks & Recreation Authority (HAPRA) provides recreation services through a tiered fee structure for contributing and non-contributing municipalities. Contributing municipalities include: The City of Howell, Oceola, Marion,

Genoa and Howell Townships. The Authority has four facilities that they operate and maintain, they are:

- Bennett Recreation Center & Tennis Courts, 925 W. Grand River Avenue, Howell, MI 48843, (517) 546-0693 (this facility also houses HAPRA’s office)
- Barnard Community Center, 415 N. Barnard Street, Howell, MI 48843,(517) 546-0693
- Oceola Community Center, 1661 Latson Road, Howell, MI 48843, (517) 546-0693
- Howell Aquatic & Fitness Center, 1224 W. Grand River Avenue, Howell, MI 48843, (517) 579-2871

The Aquatic & Fitness Center is within a Howell Public Schools facility, but it is managed and programmed by HAPRA.

The Southeast Livingston County Recreation Authority (SELCRA) provides recreation services through a tiered fee structure for contributing and non-contributing municipalities. Contributing municipalities include: The Charter Township of Brighton and Green Oak Charter Township. The Authority offices are housed in the Brighton Educational Community

Center at 125 S. Church Street, Brighton, MI 48116, (810) 299-4140. The Authority primarily utilizes the facilities of the Brighton Area Schools, and various private recreation partners, but they have 1 facility that they operate and maintain, which is:

- Green Oak Historical Society Building, 10789 Silver Lake Road, Brighton, MI 48116, (810) 229-4140

Public School Districts

There are five public school districts in Livingston County that provide many of the sports fields, gymnasiums and other recreational facilities for HAPRA, SELCRA and private recreation entities. The public school districts are:

- Brighton Area Schools, 125 S. Church St., Brighton, MI 48116 (810) 229-4000
- Fowlerville Community Schools, 7677 Sharpe Road, Suite A, Fowlerville, MI 48836 (517) 223-6000
- Hartland Consolidated Schools, 9525 Highland Road, Howell, MI 48843 (810) 626-2100
- Howell Public Schools, 411 N. Highlander Way, Howell, MI 48843 (517) 548-6200

- Pinckney Community Schools, 2130 E. M-36, Pinckney, MI 48169 (810) 225-3900

Non-profit Nature Preserves and Sanctuaries

The Livingston County Conservancy, the Southeast Michigan Land Conservancy and the Michigan Nature Association are active non-profit providers of park and recreation land in Livingston County. Their partnership with the Livingston County Parks and Open Space Advisory Committee is valued due to their expertise in land preservation techniques. Following are their preserved spaced throughout Livingston County.

Livingston Land Conservancy

P.O. Box 236, Brighton, MI 48116 (810) 229-3290

- Logan Lakes Nature Preserve, Oceola Township
- Morris Reichart Nature Preserve, Dutton Road, Gregory, MI (734) 484-6565
- Northumberland Nature Preserve, Handy Township
- Arthur M. Pasinski Memorial Preserve, Oceola Township

- Unadilla Nature Preserve, Gregory, MI
- Charles and Albert Parker Families Nature Preserve, Brighton Township
- Round Lake Woods Nature Preserve, Hartland Township
- Kernie King Memorial Fen, Genoa Township

Southeast Michigan Land Conservancy, 8383 Vreeland Road, Ypsilanti, MI 48198 (734) 484-6565

- Lyon's Point Nature Preserve, Hamburg Township
- Morris-Reichart Nature Preserve, Unadilla Township
- Nichwaugh Lake Nature Preserve, Green Oak Township
- Warren H. Carpenter Nature Preserve, Marion Township

Michigan Nature Association, 2310 Science Parkway, Suite #100, Okemos, MI 48864, (866) 223-2231

- Bullard Lake Fen, Hartland Township

- Lyle and Mary Rizor Nature Sanctuary, Tyrone Township
- Ernest and Minnie Hudspeth Memorial Nature Sanctuary, Brighton Township
- Huron River Nature Sanctuary, Green Oak Township
- H.E. Hardy Memorial Nature Sanctuary, Deerfield Township

- Howell Area Junior Football Association, P.O. Box 412, Howell, MI 48844, (517) 518-2836
- Livingston County Area Junior Football League, P.O. Box 2007, Howell, MI 48844
- Livingston Conservation & Sports Association, 8532 McClements, Brighton (810) 227-2917
- Hamburg Fitness Center and Camp, 8540 Hamburg Road, Brighton, MI 48116, (810) 231-4169
- Howell Sea Serpents Competitive Swim Team, Howell, MI (517) 546-0693

Private Recreation Departments/Associations

Several private recreation departments and associations also run recreation programs in Livingston County. They include:

- Legacy Center, 9299 Goble Drive, Brighton, MI 48116, (810) 231-9288
- Michigan Sports Academy, 1260 E. Grand River, Howell, MI 48843, (517) 552-9000
- Batters Up Batting Cages, 7341 Grand River, Brighton, MI 48114, (810) 227-2566
- Hartland Area Youth Athletic Association (HAYAA), <https://www.hayaasports.com> (810) 229-8608
- Howell Area Junior Baseball, Howell (517) 546-6470

Private and Commercial Recreation Facilities

Private and commercial recreation facilities are plentiful in Livingston County, primarily in the form of golf courses. The following list may not include 100% of county-wide private and commercial recreation facilities, but it does depict the general scope of recreation facilities available in Livingston County.

Ballooning

- Renaissance Balloons, Inc. 3800 W. Grand River, Howell, MI 48855, (517) 552-1900

- Michigan Hot Air Adventures, 1561 Villa View Lane, Howell, MI 48843 (517) 376-2141

Bowling

- Brighton Bowl, 9871 E. Grand River, Brighton, MI 48116, (810) 227-3341
- Howell Bowl-E Drome, 907 E. Grand River, Howell, MI 48843, (517) 546-0520
- Striking Lanes, 1535 N. Old US-23, Hartland, MI 48353, (810) 632-5241

Campgrounds & RV Parks, Private

- Dibrova Camp, 8400 Maltby Road, Brighton, MI 48116 (810) 231-1818
- Hell Creek Ranch, 10866 Cedar Lake Road, Pinckney, MI 48169 (734) 878-3632
- Lake Chemung Outdoor Resort, 320 S. Hughes Road, Howell, MI 48843 (517) 546-6361
- Taylor Beach Campground, 6197 N. Burkhart Road, Howell, MI 48855 (517) 546-2679
- Waldenwoods Family Recreation Resort, 2975 Old US-23, Howell, MI 48843 (810) 632-6420

Camps

- Broadacres Farms for Kids, 2948 Cedar Lake Road, Howell, MI 48843 (517) 546-3438
- Camp Talahi, 6458 Richardson Road, Howell, MI 48843 (Hamburg Twp) (810) 844-1499
- Emrich Retreat Center, 7380 Teahen Road, Brighton, MI 48116 (810) 231-1060
- Howell Nature Center, 1005 Triangle Lake Road, Howell, MI 48843 (517) 546-0249
- Our Lady of the Fields Camp, 1391 Kellogg Road, Brighton, MI 48114 (248) 376-1819
- Wildwood Ranch, 4909 Brophy Road, Howell, MI 48855 (517) 548-1736

Canoe Rental

- Heavner Canoe and Kayak Rental, 2775 Garden Road, Milford, MI 48381 (248) 685-2379
- Hell Creek Ranch, Inc., 10866 Cedar Lake Road, Pinckney, MI 48169 (734) 878-3632

Golf Courses, private

- Lakelands Golf and Country Club, 8760 Chilson, Brighton, MI 48116 (810) 231-3000

- Oak Pointe Country Club, 4500 Club Drive, Brighton, MI 48116 (810) 229-4554

Golf Courses, public

- Coyote Preserve Golf Club, 9218 Preserve Dr., Fenton, MI 48430 (Tyrone Twp) (810) 714-3206
- Dunham Hills Golf & Country Club, 13561 Dunham Road, Hartland, MI 48353 (248) 887-9170
- Faulkwood Shores Golf Course, 300 S. Hughes, Howell, MI 48843 (517) 546-4180
- Hartland Glen, 12400 Highland Road, Hartland, MI 48353 (248) 887-3777
- Hawk Meadows at Dama Farms, 410 E. Marr, Howell, MI 48855 (517) 546-4635
- Hunters Ridge, 8101 Byron, Howell, MI 48855 (517) 545-4653
- Huntmore Golf Club, 9595 Estancia Road, Brighton, MI 48814 (810) 202-0489
- Huron Meadows Golf Course, 8765 Hammel, Brighton, MI 48816 (800) 477-3193
- Ironwood Golf Club, 6902 E. Highland Road, Howell, MI 48843 (517) 546-3211

- Kensington Metropark Golf Course, 13760 High Ridge Drive, Brighton, MI 48114 (Brighton Twp) (810) 227-8916
- Majestic at Lake Walden, 9600 Crouse Road, Hartland, MI 48353 (810) 632-5235
- Moose Ridge Golf Course, 11801 Doane Road, South Lyon, MI 48178 (Green Oak Twp) (248) 446-9030
- Oak Pointe Golf Course, 4500 Club Dr., Brighton, MI 48116 (810) 227-4541
- Rush Lake Hills Golf Club, 3199 Rush Lake Road, Pinckney, MI 48169 (734) 878-9790
- The Golf Club at Mount Brighton, 4141 Bauer, Brighton, MI 48116 (810) 229-9581
- Timber Trace Golf Club, 1 Champions Circle, Pinckney, MI 48169 (734) 878-1800
- Tyrone Hills Golf Course, 8449 Old US-23, Fenton, MI 48430 (Tyrone Township) (810) 629-5011
- Whispering Pines Golf Club, 2500 Whispering Pines Drive, Pinckney, MI 48169 (734) 878-0009

Golf Driving Ranges

- Fairway Golf Center Driving Range, 11579 Highland Road, Hartland, MI 48353 (810) 632-9079

- Faulkwood Shores Golf Course, 300 S. Hughes, Howell, MI 48843 (517) 546-4180
- Golf-o-Rama, 2944 S. Old US-23, Brighton, MI 48114 (810) 227-9322
- Grand River Golf Range & Putt Putt, 4444 E. Grand River, Howell, MI 48843 (517) 552-9830
- Hartland Glen Golf Range, 12400 Highland Road, Hartland, MI 48353 (248) 887-3777
- Hawk Meadows Golf Course, 410 E. Marr, Howell, MI 48855 (517) 546-4635
- Hunters Ridge, 8101 Byron, Howell, MI 48855 (517) 545-4653
- Majestic at Lake Walden, 9600 Crouse Road, Hartland, MI 48353 (810) 632-5235
- Moose Ridge Golf Course, 11801 Doane Road, South Lyon, MI 48178 (Green Oak Twp) (248) 446-9030
- Tag’s Adventure Golf & Driving Range, 1535 N. Old US-23, Howell, MI 48843 (810) 632-7422
- The Golf Club at Mount Brighton, 4141 Bauer, Brighton, MI 48116 (810) 229-9581

Golf, Miniature

- Golf-o-Rama, 2944 S. Old US-23, Brighton, MI 48114 (810) 227-9322
- Tag’s Adventure Golf & Driving Range, 1535 N. Old US-23, Howell, MI 48843 (810) 632-7422
- Grand River Golf Range & Putt Putt, 4444 E. Grand River, Howell, MI 48843 (517) 552-9830

Gymnasiums and Health Clubs (not inclusive of all clubs)

- Hamburg Fitness Center, 8540 Hamburg Road, Brighton, MI 48116 (810) 231-4169
- Howell Aquatic and Fitness Center, 1224 W. Grand River, Howell, MI 48843 (517) 579-2871
- Snap Fitness, 1455 N. Michigan Avenue, #900, Howell, MI 48843 (517) 546-120
- Planet Fitness, 1135 E. Grand River, Howell, MI 48843 (517) 338-9800
- Anytime Fitness, 980 W. Highland Road, Howell, MI 48843 (517) 540-1552
- Title Boxing Club, 8491 W. Grand River Ave., #100, Brighton, MI 48116 (810) 626-0155
- 2 Studio Gym, 951 S. Latson Road, Howell, MI 48843 (517) 518-8023

- MI Fitness, 736 W. Grand River Ave., Brighton, MI 48116 (810) 494-7176
- Anytime Fitness, 101 Brookside Lane, Brighton, MI 48116 (810) 227-3300
- Planet Fitness, 1007 E. Grand River, Brighton, MI 48116 (810) 844-5000
- Crossfit Brighton, 603 W. Grand River, Brighton, MI 48116 (810) 220-2900
- Maximum Fitness Center of Fowlerville, 8067 Country Corner Dr., Fowlerville, MI 48836 (517) 223-4740

Gymnastics

- Bounce, 2755 Arena Drive, Hartland, MI 48353 (810) 632-7222
- Hartland Gymnastics Academy, 9525 E. Highland Road, Howell, MI 48843 (810) 626-2170
- High Flyers Educational Gymnastics, 960 Victory Drive, Howell, MI 48843 (810) 229-7740
- Infinity Gymnastics, 12420 Grand River Ave., Brighton, MI 48116 (810) 229-4966
- Livingston County Gymnastics, 760 McPherson Drive, Howell, MI 48843 (517) 672-6062

Horseback Riding

- Brighton Riding Stables, 6660 Chilson Road, Howell, MI 48843 (810) 534-5063
- Hell Creek Ranch, Inc., 10866 Cedar Lake Road, Pinckney, MI 48169 (734) 878-3632
- Wildwood Ranch, 4909 Brophy Road, Howell, MI 48855 (517) 548-1736

Nature Centers

- Howell Nature Center, 1005 Triangle Lake Road, Howell, MI 48843 (517) 546-0249
- Kensington Metropark Nature Center, 4570 Huron River Parkway, Milford, MI 48380 (Brighton Twp) (810) 227-8917

Skating, Ice

- Grand Oaks Ice Arena, 970 Grand Oaks Dr., Howell, MI 48843 (517) 548-4355
- Kensington Valley Ice House, 10540 Citation Drive, Brighton, MI 48116 (810) 494-5555

Skating, Roller

- Rollerama II, 6995 Grand River Ave., Brighton, MI 48814 (810) 227-2010

Skiing, Downhill

- Mount Brighton Ski Area, 4141 Bauer, Brighton, MI
48116 (810) 229-9581

Skiing, Cross-Country

- Howell Nature Center, 1005 Triangle Lake Road,
Howell, MI 48843 (517) 546-0249

Soccer

- Legacy Center, 9299 Goble Drive, Brighton, MI
48116, (810) 231-9288
- Michigan Alliance FC, P.O. Box 625, Brighton, MI
48116, (517) 545-7778
- South Lyon Soccer Club, 125 N. Lafayette Street,
South Lyon, MI 48178 (Green Oak Twp), (248) 701-
6053
- Soccer Shots of Livingston County, Brighton, MI
48116 (616) 446-2635
- SELCRA, 125 S. Church Street, Brighton, MI 48116
(810) 299-4140

V. EXISTING LIVINGSTON COUNTY PARKS

LUTZ COUNTY PARK



Park History and Formation

The 300 acre Lutz County Park property was received by Livingston County on May 31, 2005, following the death of Mr. Owen Lutz in June of 2004. Mr. Lutz’s intentions for this land were clear; the land should be used for passive recreation as a future Livingston County Park. The property became the first Livingston County Government owned park.

Mr. Lutz was born and raised on the property, and ultimately lived on and farmed the land for over 60 years of his life.

Approximately 160 acres of the 300 acre park property is active agricultural land (field crops or pasture) that Mr. Lutz leased to tenants. The Lutz homestead including the Lutz house, barns, and outbuildings (on Cohoctah Road) comprise approximately 2 1/2 acres.

Several staff persons from Livingston County Administration developed a relationship with Mr. Lutz in the later years of his life. Mr. Lutz frequently walked the property with staff, imparting his vision of how his land should be used as a county park. He was adamant that both the natural areas and the farmed areas continue to be used as such. He envisioned farming and recreation land uses hand-in-hand, each intended to complement the other. For instance, Mr. Lutz laid out paths and two-track roads where he intended future trails to be established. These trail areas were planned to provide opportunities for users to experience high-quality natural areas, scenic views, and wildlife and its habitat while at the same time passing by farm fields. Mr. Lutz hoped that farming-related activities on the property would become interpretive opportunities for park users.

Between 2005 and 2008, the Livingston County Parks & Open Space Advisory Committee worked diligently to plan and prepare for the opening of this park. An Ecological Evaluation was commissioned for the property, County Park Rules were written, a parking area, signage and display case were constructed, and benches and picnic tables were placed along the trail system that Mr. Lutz had established prior to his death.

The northern 100 acres +/- of Lutz County Park was officially opened to the public for recreational use on August 22, 2008, with considerable public support and enthusiasm. The opening day festivities were widely publicized and promoted through mailings, radio and newspaper.

The park continues to be promoted through the Livingston County website: <https://www.livgov.com/parks/Pages/Lutz-Park.aspx> which contains a variety of informational materials such as park rules, geocaching rules, the Livingston County Parks & Open Space Plan, history of the Lutz County Park and a gallery of photos (see at end of chapter).

General Description of Park

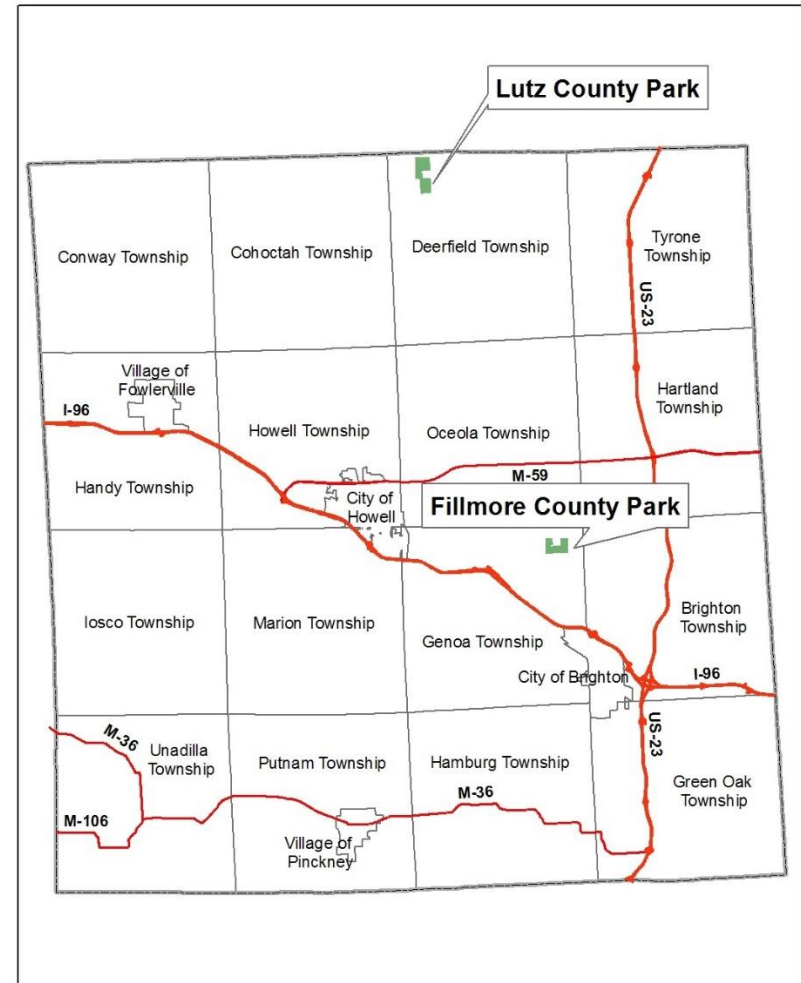
Lutz County Park consists of 300 acres of land within Deerfield Township in the northeast quadrant of Livingston County.

Deerfield Township is a rural community consisting largely of rolling countryside, dairy farms, woods and fields. The Township is also noted for the Oak Grove State Game Area. This wildlife habitat is owned and maintained by the Michigan Department of Natural Resources and it has a fine reputation for excellent deer hunting and fishing. In 2007, the Michigan Department of Natural Resources purchased approximately 188 acres of land in Deerfield Township adjacent to the Oak Grove State Game area in order to expand the game area. This land purchase connected the game area to the Lutz County Park creating a larger contiguous expanse of acreage for the preservation of natural features, wildlife habitat and the South Branch of the Shiawassee River.

The Lutz County Park property provides new opportunities for county residents to experience and appreciate a variety of

natural features such as meadows, significant woodlands, forested wetlands, wildlife viewing, and additional land being farmed. The park also contains many interesting structures on the Lutz family farmstead including a farmhouse, summer house, silo, garage, two barns, and miscellaneous outbuildings. In addition to the farmstead there are two (2) structures being rented by the county and two (2) parcels of land that are being leased by the county for farming.

Farm leases have been drafted to insure proper control of farming activities so as not to interfere with recreational activities. Additionally, the tenants have become very beneficial stewards of the land, notifying county administration of any maintenance or security issues as they arise. The income that is generated by these rental and lease agreements is used for operation



Prepared by the Livingston County Department of Planning January 2012



and maintenance of the park. Livingston County's Building Services Department provides the personnel and equipment to

address all operation and maintenance issues regarding these rental and lease agreements.

Primary Service Area

In terms of percent population change, Livingston County has been the fastest or second fastest growing county in the State of Michigan for most of the 1990, 2000 and 2010 decades (with an estimated 2017 population of 189,985). Quality of life indicators in Livingston County have been impacted both positively and negatively by this population growth and associated development of the land. As the local tax base has increased, the county's infrastructure such as roads, water and sewer provision has improved. At the same time, our available open space, agricultural activities and natural resources have diminished.

Although the Lutz County Park may not be within an urban boundary as defined by the U.S. Census Bureau, it is positioned to serve residents of Livingston, Shiawassee and Genesee counties. The Livingston County communities within closest proximity to the park are the City of Howell; the

settlements of Cohoctah, and Hartland; and the townships of Deerfield, Tyrone, Hartland, Oceola, Howell and Cohoctah.

Shiawassee County is less than two miles from the park. The Villages of Byron and Argentine in Shiawassee County are well served by the park which is less than 7 miles away from each of these villages. Genesee County is less than one mile from the park. The cities of Fenton and Linden in Genesee County are within close proximity of the park; 13 and 9 miles respectively.

Lutz County Park's primary service area is not within a walkable area due to the location being within an expansive agricultural area, with gravel roadway as the primary transportation infrastructure.

Site Development Plan

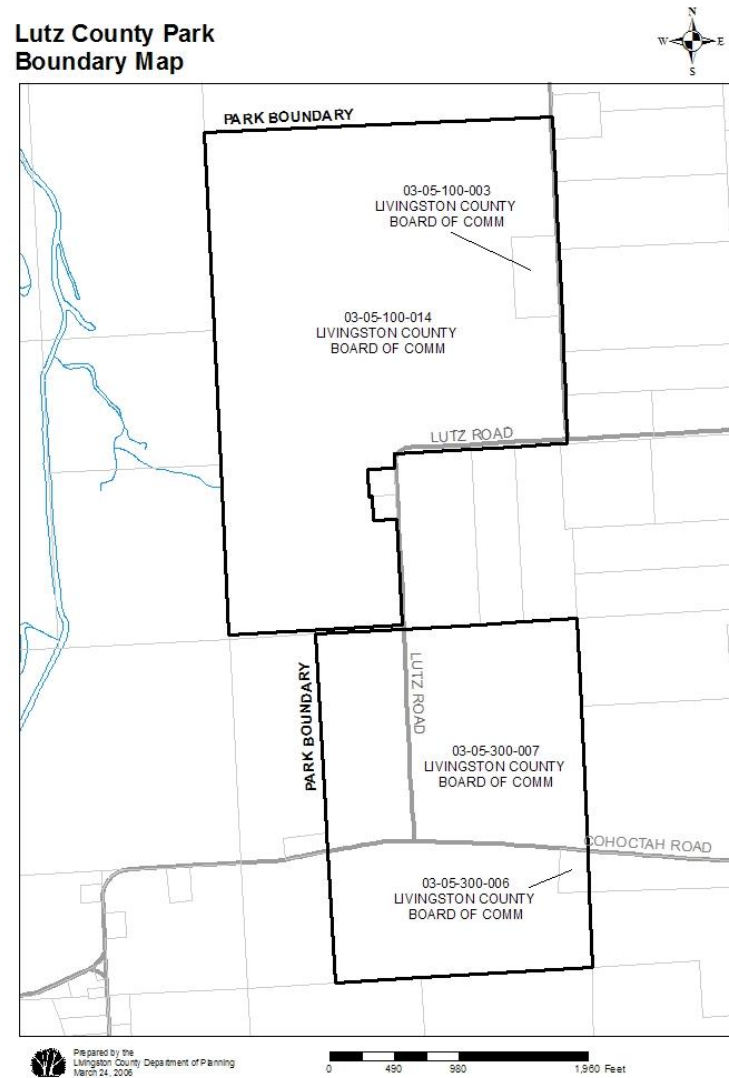
The northern 100 +/- acres of Lutz County Park is available to public users. This first phase of the park is based largely on Mr. Lutz's vision of the trailway area. The southern portion of the property is not planned for development at this time.

The Lutz County Park is much more than just a park with a trail and some picnic tables. Livingston County currently has no combined agriculture and natural resource-themed parks like this recreational opportunity, and use of the park is available without an entrance fee.

Completed improvements to Lutz County Park include:

- Boundary marker signage to differentiate the boundaries between the MDNR Oak Grove State Game Area and the Lutz County Park.
- Park furnishings -benches, picnic tables and a trailhead display case made of recycled plastic lumber which is maintenance-free and will not crack or splinter.
- A fenced parking lot that is gravel surfaced in order to minimize impervious surface and aid in the drainage of water run-off.
- A portable restroom facility that is barrier-free.

**Lutz County Park
Boundary Map**



- Trails designed to minimize the disturbance to park areas and preserve habitat by utilizing existing paths and two-tracks wherever possible.
- Five (5) directional road signs that were custom-made with the Lutz County logo, and installed by the Livingston County Road Commission.
- A park entrance sign at the parking lot/trailhead area in a landscaped bed of plantings.
- A trailhead display case with information such as park history, wildlife features and trail map.
- A bluebird trail of bird houses.
- A disguised security camera system at the trailhead.

Following is a more detailed description of the recreational facilities within the park.

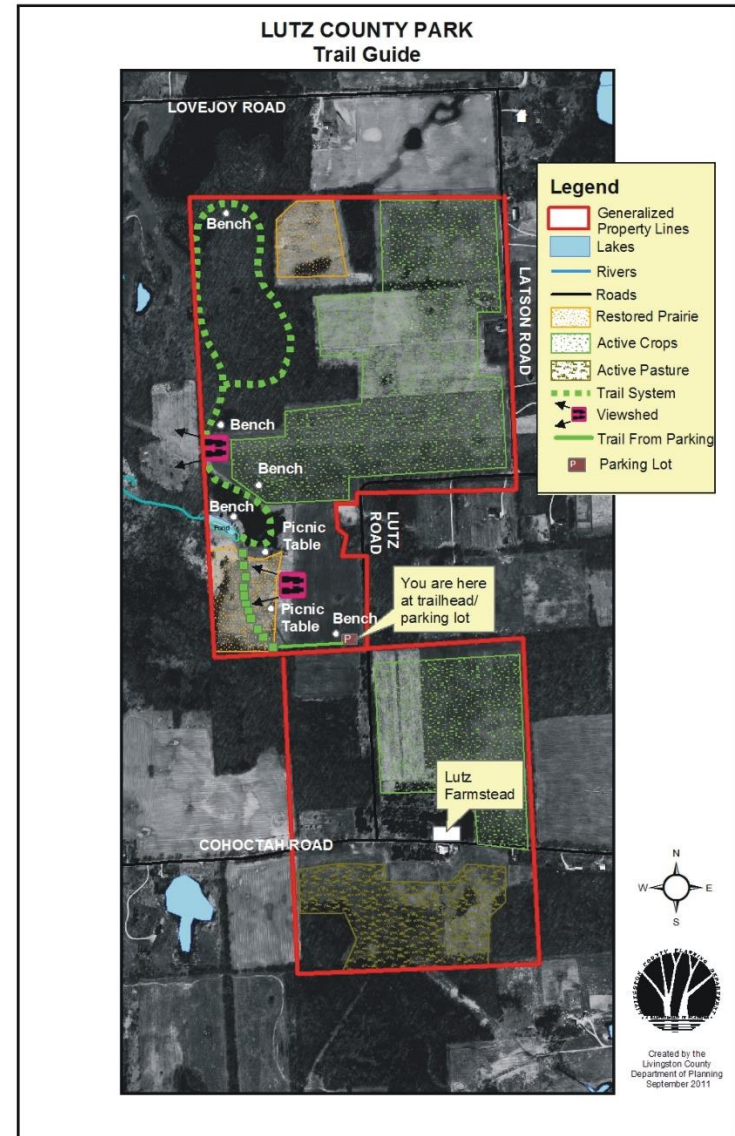
Trailhead & Parking: Park rules and a trail map are posted in the trailhead display case as well as on the county website. The trailhead area is very suitable for parking and picnicking because it is on fallow agricultural land that is at a very level grade making it amenable to universal access design. The parking lot is necessary because of the narrowness of Lutz

Road, where no shoulder parking is possible.

Trail System: From this trailhead area, Livingston County has groomed 7,000 linear feet of trails that Mr. Lutz initially laid out in a manner that takes hikers past a wide variety of natural features on this portion of the property such as: landmark oak trees of over 100 years; a pond area; two wooded areas; and views of the Shiawassee River watershed. The trails provide access to three wetland areas, one in the area around the pond and two forested wetlands. The trails are designed to protect and minimize impact on the 200+ acre wetland along the Shiawassee River immediately to the west of the park. Along the trail system are two (2) walk-thru ADA picnic tables and five (5) park benches for rest and relaxation. Not only is this portion of the Lutz County property the most environmentally diverse for hikers, but the trail system has been designed with looped trails of various lengths that permit a variety of ways out of the interior of the park to the parking lot at the trailhead area. Future signage improvements will further clarify directions on the trail and will interpret nature within the park.

Trails are also clearly visually delineated from farm fields, and if warranted, signage will be used to direct park users away from agriculture fields. No row crops (corn, soybeans) are allowed to be grown by the leasers of the fields, and at this time only hay is grown. This is much less intensive than raising row crops, requires less machinery to plant and harvest, fewer applications of pesticides or fertilizer, and has fewer opportunities for conflict between park users and farm activities.

Adjacent to the northern portion of Lutz County Park there is a property owner that lives in a farmstead near the portion of the park where the trailhead area and trails are located. This property owner leases grazing land on Lutz County park property surrounding the trails, and has been an excellent steward of the park maintaining frequent communication with Livingston County Administration regarding activity at the park.



Park Furnishings: There are currently two (2) picnic tables and five (5) benches located throughout the park. All park furnishings are made of recycled plastic lumber which is maintenance-free and will not crack or splinter. Where possible, park improvements will use environmentally friendly materials and innovative technology.

Planned and proposed improvements to Lutz County Park include:

Trailhead:

- A picnic shelter
- Access routes that connect the picnic shelter, parking area and restroom
- A barrier free trail from the trailhead parking lot to a viewing platform near a landmark Oak tree
- Historic barn assembly

Trails:

- Interpretative signs for the trailways
- Marker posts for the trail route

Pond:

- Implement aeration improvements to the park pond to revitalize the quality of the water thereby enhancing plant and animal life.

Interpretative Signs: Livingston County also plans to enhance the trail system with interpretative signs used to inform visitors of points of interest, ecosystems, history of the property or where and what types of wildlife to look for. For example, birds of prey are commonly sighted over the park, and a good candidate for a display would be one that helps identify the different species by their silhouettes and dropped feathers. There are also points along the trail that offer sweeping vistas that are excellent for wildlife watching; interpretative signs located next to benches or resting areas will take advantage of these views.

Historic Barn Assembly: In 2006, the Livingston County Parks and Open Space Advisory Committee saved a barn from demolition in a Livingston County airport expansion project. The barn dates from the 1860’s and it was taken down by a barn preservation expert and stored at Lutz County Park. A

proposed improvement to Lutz County Park involves reassembling this barn on the site of the Lutz homestead barn, which burned down several decades ago. If this improvement is made, publicity programs will be developed in conjunction with the barn preservation project. The barn could potentially be used for public and government events, such as receptions, conferences, and reunions. Facilities like these are in extremely limited supply in Livingston County, and this amenity might draw visitors to the park and its trail system.

Accessibility Evaluation

A critical component in planning for recreation facilities is providing barrier-free/universal access in order to accommodate the needs of all people, including those with disabilities. The 2010 ADA Standards for Accessible Design was used as a reference to rank the overall accessibility of Lutz County Park. This ranking system is described as follows:

1. None of the facilities meet accessibility guidelines
2. Some of the facilities/park areas meet accessibility guidelines
3. Most of the facilities/park areas meet accessibility guidelines

4. The entire park meets accessibility guidelines
5. The entire park was developed/renovated using the principle of universal design.

At this time when compared to the 2010 ADA Standards for Accessible Design, Lutz County Park ranks as follows:

Lutz County Park Accessibility Ranking	
Ranking	Comments
2	The park has a trailhead/parking area that meets some accessibility guidelines such as a level gravel parking surface and handicap restroom. However, there are not designated handicap parking spaces nor a paved path that connects parking to the restroom, trail head display case and adjacent bench. Additionally, all trails within the interior of the park are natural surfaced gravel trails. At least one trail should be an accessible, hard-surfaced trail to a viewing platform.

Opening day festivities at Lutz County Park and a later accessibility assessment of the park by the Ann Arbor Center for Independent Living, have shaped the plans for future

improvements at the park so that it becomes more of a barrier-free/universally accessible park.

The Lutz County Park trailhead was utilized by over 100 residents for opening day festivities at the park on August 22, 2008. This event helped the Livingston County Parks and Open Space Advisory Committee evaluate our site planning of the trailhead area by observing participant's use of the parking area, trailhead display case, restroom and park bench.

Approximately 1/3 of our guests were senior citizens and their ability to access our temporary tent and restroom for the festivities, has determined our placement of a community picnic shelter and restroom within very close proximity to the parking area, linked by an asphalt walk.

All future trailhead improvements will meet universal access design standards. The floor of the picnic shelter will be at zero grade with an accessible pathway that is flush to the floor of the shelter providing ingress and egress. The access routes that will link these trailhead facilities will be asphalt surfaced with a width of 60 inches to allow passing space and a turn-around radius for wheelchair users. Fixed picnic tables in the shelter

will be a walk-thru ADA style similar to those currently in place along the trails. These tables provide wheel chair seating space with a 24 inch overhang at one end of the table and a walk-thru design where there are no bars to step over to the seating.

Planning for a barrier-free universal design trail from the trailhead parking lot to a viewing platform was also influenced by opening day festivities. Planning for this trail has involved a considerable amount of collaboration with experts. For instance, the consultants hired to prepare the ecological evaluation for Lutz County Park have helped us identify the best viewing areas for wildlife in the park, the Arc of Livingston had phone and in-person discussions with County Planning Staff about the concepts of universal design, and the Ann Arbor Center for Independent Living conducted an accessibility assessment of Lutz County Park trails.

The purpose of the accessibility assessment was to help the Livingston County Parks and Open Space Advisory Committee add a universally accessible trail to the park, so that persons with mobility issues will be able to use the picnic shelter and restroom at the trailhead, and they would also be able to access

the trails and get enjoyment and recreation out of the natural beauty of Lutz County Park.

A mobility impaired staff person from The Ann Arbor Center for Independent Living walked the entire 7,000 foot trail with County Staff. During the assessment we discussed many trail issues such as slope, level trail surface, rock and root outcroppings on the trail, boardwalks, trail signage and furniture.

The assessment has influenced the future design of Lutz County Park by illustrating the many trail options we have available to us. The Park has many meadow and forest surfaces that are fairly level and can easily be made universally accessible.

Based on this assessment, the Livingston County Parks and Open Space Advisory Committee has decided to extend a trail of asphalt finds across a field to connect the trailhead area of the park (where the parking lot, picnic shelter and restroom is located) to a large landmark Oak tree that has an accessible picnic table placed under it. Subsequent phases may be planned

that will extend beyond the Oak tree towards the woods where a viewing platform will offer views of the pond below.

The Livingston County Parks and Open Space Advisory Committee will maintain a relationship with the Ann Arbor Center for Independent Living and will seek their counsel as plans and construction of the universally accessible trail system move forward.

Ecological Evaluation

In 2006 the Livingston County Parks and Open Space Advisory Committee had an ecological evaluation of Lutz County Park completed by environmental professionals from Weatherbee's Botanical Surveys. The evaluation was completed in June 2006 and was officially adopted by the County Parks & Open Space Committee on July 12, 2006.

During the inventory for the evaluation, a total of 60 species of animals and 170 species of plants were documented. Based on a Floristic Quality Assessment and interpretive guidelines established by the Michigan Department of Natural Resources for such assessments, the biodiversity of Lutz County Park was found to be significant at a state-wide level.

The inventory of animal species observed or evidenced in the Park included fourteen species of mammals, thirty-four of birds, six amphibians and six species of butterflies. It is expected that this list will grow considerably as more observations are made, and attentive visitors may be rewarded with sightings of these and other species. Outstanding animal sightings in the park include thousands of wood frogs and western chorus frogs chorusing in the wooded wetlands in the northwest part of the park, and wading birds such as herons and egrets frequently sighted in and around the pond.

The ecological evaluation also contains recommendations on ecological stewardship and farmstead use and amenities. Additionally, it identifies four (4) areas of interest within the northern portion of the park where the park land is open to the public. These four areas of interest comprise a total of 57 acres and they include:

Lutz County Park Ecological Evaluation				
Acres	Community Classification(s)	Total Species Count	Native Species Count	Floristic Quality Index
4	Dry-Mesic Forest and Southern Swamp	40	36	20.83
34	Dry-Mesic Southern Forest, Southern Swamp, Southern Shrub-carr and Emergent Marsh	66	63	32.25
6	Conifer Plantation and Emergent Marsh	57	41	19.68
13	Old-field and Southern Wet Meadow	67	43	18.91
TOTAL 57 Acres				

With the exception of the four (4) acre forest and swamp area noted in the table, the remaining 53 acres of natural area actually adjoins other types of natural areas off-site, most notably in the Oak Grove State Game Area (adjacent to the west of the park). The 53 acres of natural area in Lutz County Park buffers an extensive wetland area (200+ acres) in the Oak Grove State Game Area that surrounds the South Branch of the Shiawassee River. Lutz County Park will preserve this natural area in perpetuity thereby buffering the Shiawassee River and associated wetlands on adjacent state land from the harmful impacts of development such as erosion, impervious surfaces, surface water run-off, etc. Likewise, the conifers on Lutz County Park adjacent to the State Game Area, provide winter food and cover for wildlife. In the ecological evaluation of the park this area showed the greatest amount of use during the winter as indicted by the number of mammal tracks in the area. The preservation of this area sustains the wildlife to the benefit of both the Lutz County Park and Oak Grove State Game Area.

There are also approximately 13 acres of wetlands in Lutz County Park per the National Wetlands Inventory. Most of this wetland area is within the 34 acre forest noted in the table

Livingston County will manage and maintain the natural resources of Lutz County Park through the following practices: monitoring of invasive species; removal of invasive species; conducting additional ecological inventorying; promotion of sound ecological agricultural practices on leased agricultural lands; implementation of a restoration plan for North American prairie; and facilitation of community education events at the park that encourage good public stewardship of the land.

MDNR Grant Fund Status

No grant funding of any kind, including Michigan Department of Natural Resources grants, has been utilized for the park and recreation facilities of Lutz County Park.

Park Photos

Trailhead & Parking:



Trailhead & Parking:



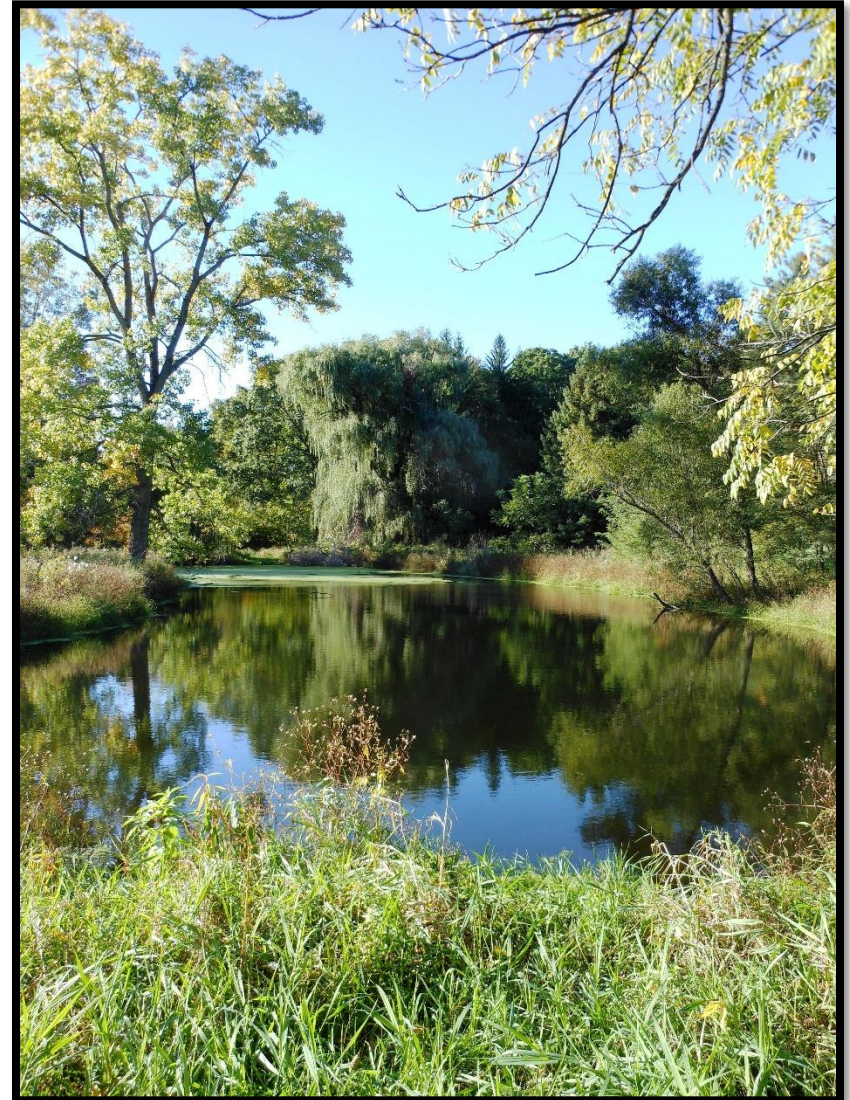


Landmark Trees & Picnicking:

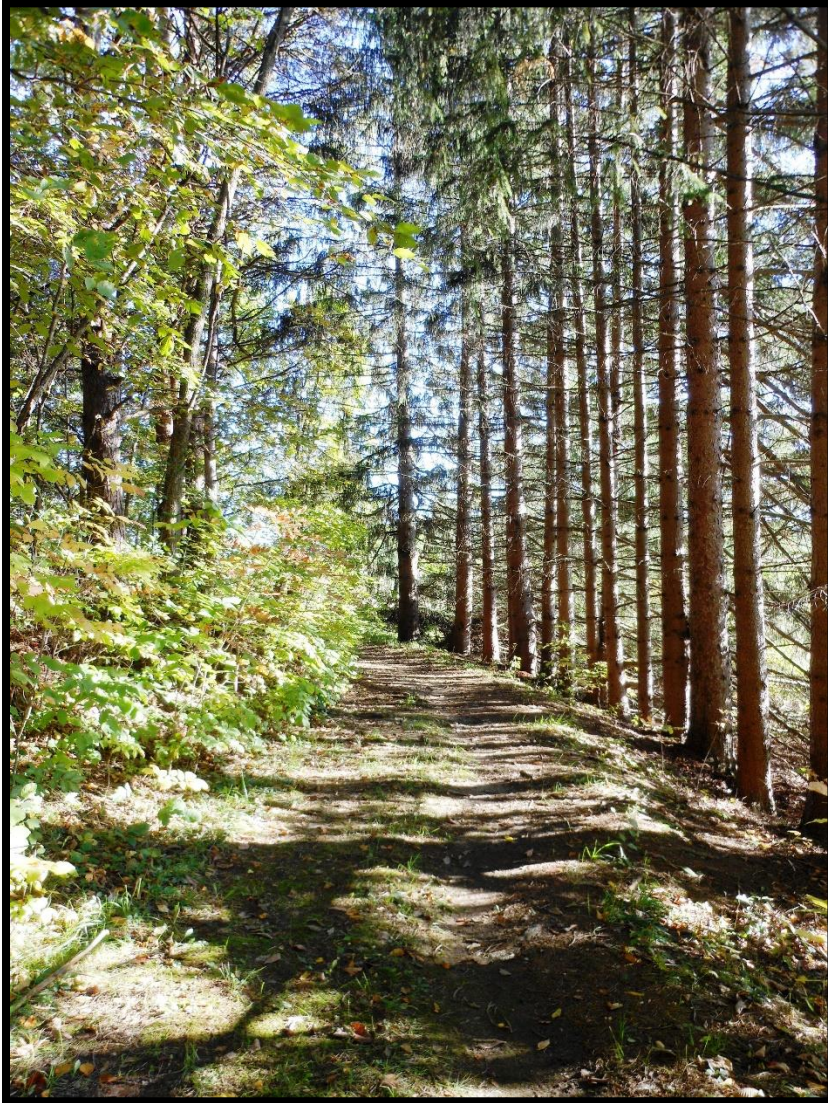




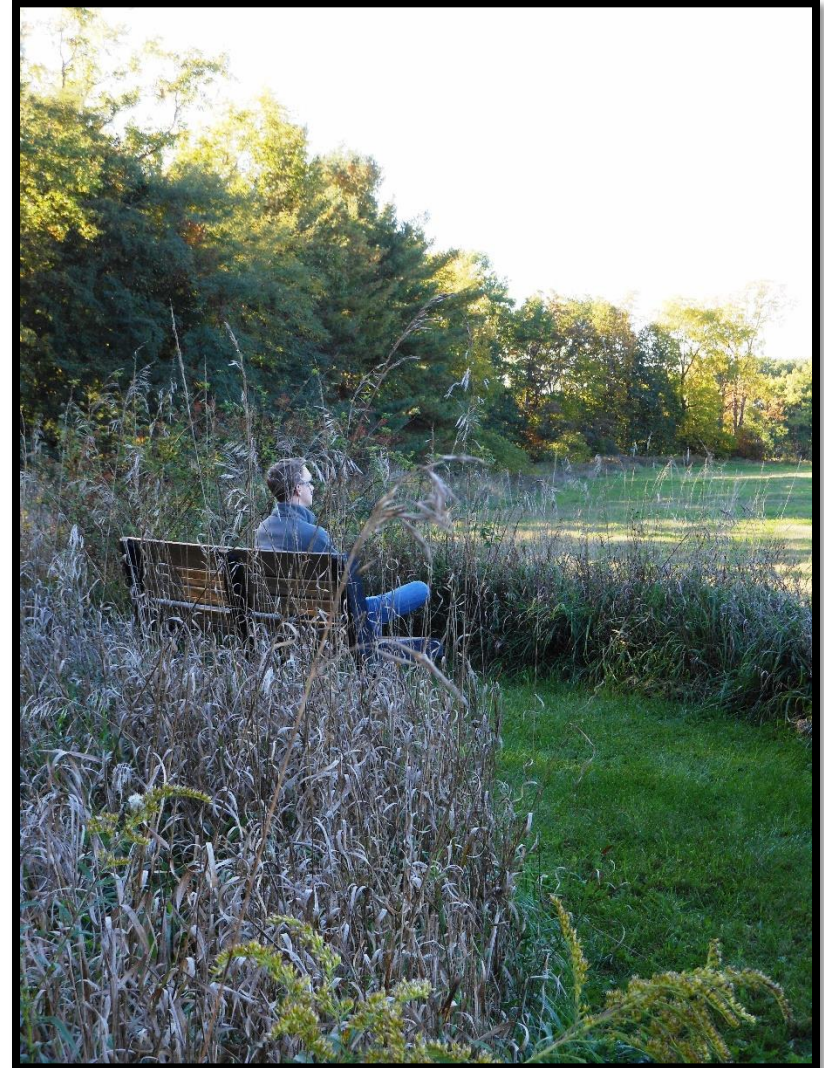
The Pond:



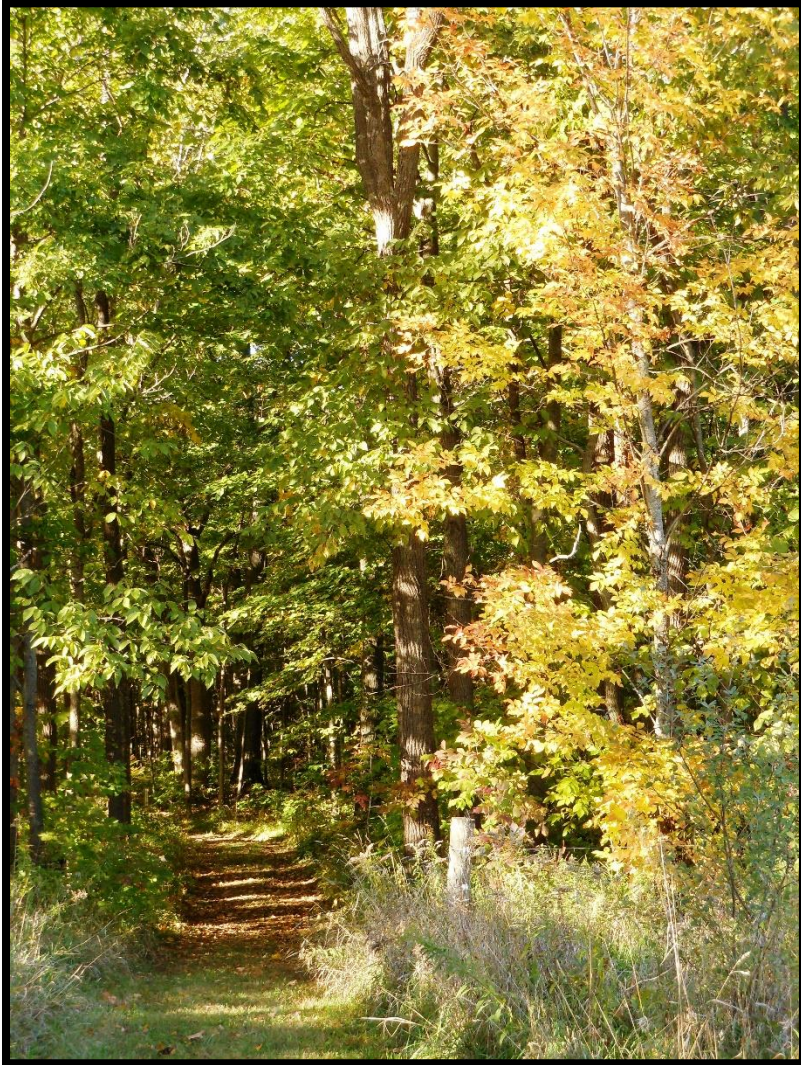
The Conifer Woods Trail:



Trail Benches and Nature Views:



The Forest Trail:



The Dark Sky and Stargazing:





FILLMORE COUNTY PARK



Park History and Formation

In 2006, soon after Livingston County acquired the Lutz property, another local property owner, Raymond Fillmore, bequeathed a 198 acre farm in Genoa Township to Livingston County. According to the benefactor's wishes, this park will be dedicated to active recreational pursuits and if a ballfield is developed, it is to be named after a long-serving Livingston County Commissioner.

The park is currently undeveloped, therefore it does not have any established entrance or signage identifying the property and it is not yet open to the public. In 2019 this land will be developed into Fillmore County Park.

At present, Livingston County is actively managing the natural resources on the property, and maintaining the residential dwelling on-site.

The Livingston County Parks and Open Space Advisory Committee began planning for the Fillmore Park in 2013 with a broad based needs assessment utilizing resources from agencies, communities and individuals in the area including: Southeastern Livingston County Recreation Authority (SELCRA); Howell Parks and Recreation Authority (HAPRA); Livingston County municipalities; Huron Clinton Metroparks; county surveys to local residents; and information seeking from local leaders and park neighbors. Community leaders and residents were surveyed to explore what amenities were desired by the public and results demonstrated that there was a significant interest in outdoor organized sports facilities for activities such as baseball, softball, and soccer. Survey results indicated that the highest ranked non-organized outdoor activities were paved and non-paved trails, playgrounds, and picnic facilities.

With this completed needs assessment, POSAC issued a request for proposals and received bids from firms that could assist the committee with grant writing and master planning of Fillmore County Park according to the wishes expressed in Raymond Fillmore’s bequest to Livingston County. After interviewing the firms that bid, the selection committee contracted with Landscape Architects and Planners (LAP) of Lansing, MI.

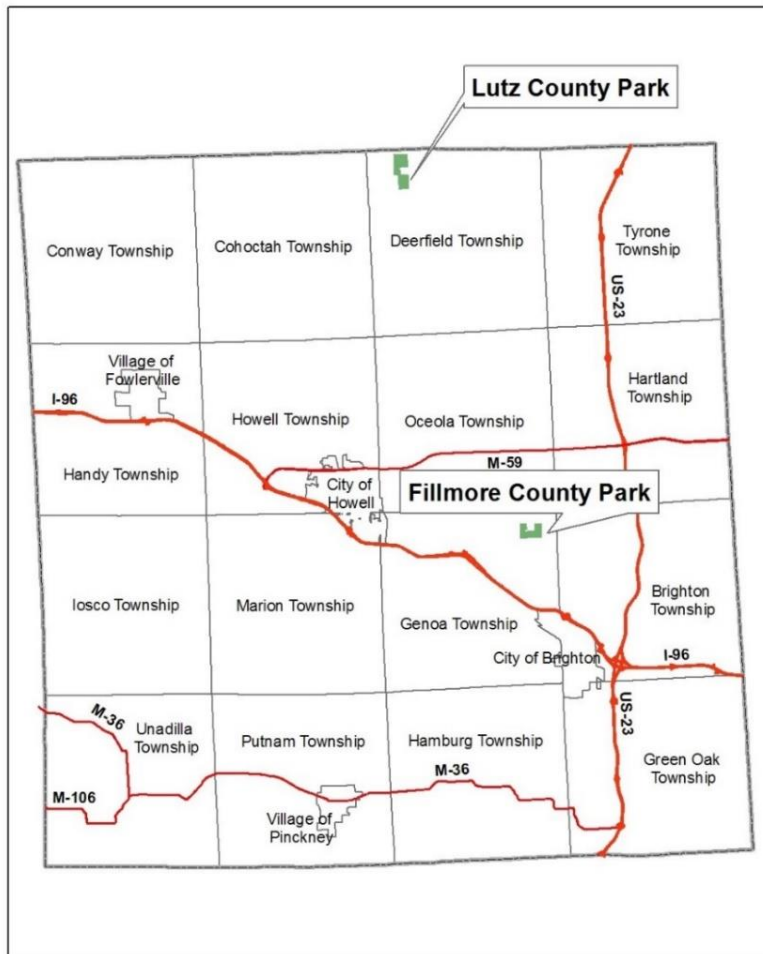
LAP conducted field work at the park site to determine the appropriate locations for an entrance to the park and a first phase of development. Through the course of several planning sessions with POSAC members, conceptual plans for Fillmore County Park were produced depicting various phases of development and the type of park usage that might comprise each phase.

General Description of Park

Fillmore County Park consists of 198 acres of land within Genoa Charter Township in the southeast quadrant of Livingston County. Genoa Township is primarily a suburban residential community that has grown rapidly throughout the

decades. It is the second largest Township in Livingston County with a 2017 estimated population of 20,881.

The Grand River Avenue Corridor runs through Genoa Township and the commercial establishments of the Township are located along this state trunk-line. Grand River Avenue and Genoa Charter Township also connect the two Livingston County cities of Howell and Brighton. Fillmore County Park is easily accessed off of Grand River Avenue about mid-way between the two cities. The park is located in the northeast corner of Genoa Charter Township where agriculture is more prominent.



Prepared by the
Livingston County Department of Planning
January 2012



The entire park parcel was recently rezoned to Public and Recreational Facilities (PDF). The permitted uses of this

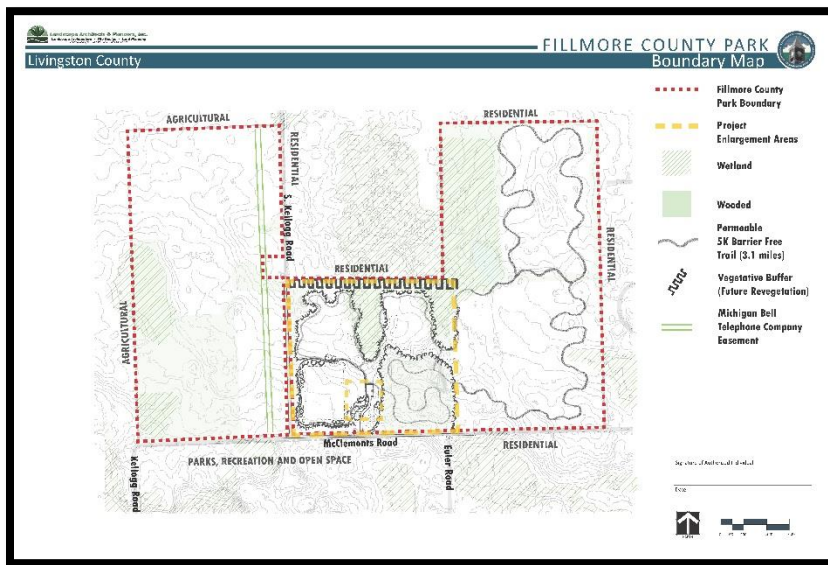
zoning district include: Township, county, state and federal buildings and uses for administrative functions and uses by the general public; and publicly owned parks, open space, recreation areas, playgrounds, lakes, beaches, pools, gardens and nonprofit golf courses without driving ranges or restaurant/banquet facilities. PDF zoning better recognizes and accommodates the future Livingston County park use, and it is consistent with the PDF zoning of a large tract of land adjacent to the south owned by the Chaldean Catholic Church for Lady of the Fields camp. The camp is used for parks and recreation, camping and retreat types of activities.

Surrounding zoning and land use is primarily agriculture and large lot residential (Country Estate zoning – 5 acre minimum and Rural Residential zoning – 2 acre minimum) to the west, north, and east of the property. The only exception is a subdivision zoned Suburban Residential to the east of the park property, on ½ to 1 acre lots along McClements Road.

Farming leases were in place at the time Raymond Fillmore bequeathed the land, but these leases were not continued in preparation for the future park. Mr. Fillmore wanted the park to

be a pleasant setting for the residents of the County to enjoy, whether it is used for baseball diamonds, picnic grounds, or hiking/walking paths. The Livingston County Parks and Open Space Advisory Committee is actively engaged in the pursuit of making Mr. Fillmore’s wishes a reality.

mile north of Grand River Avenue, a major east-west corridor that connects the cities of Howell and Brighton and is a Michigan trunkline highway across lower Michigan. Fillmore County Park abuts a U.S. Census Urbanized Area. It is near the population center of its service area, and of the County as a whole. The service area includes Oceola, Marion, Genoa, Hartland and Brighton Townships, the cities of Howell and Brighton, and the service areas of both the Howell Area Parks & Recreation Authority (HAPRA) and the Southeast Livingston County Recreation Authority (SEL CRA).



Note: See full-sized map in Appendix.

Primary Service Area

Fillmore County Park is intended to serve the Howell, Brighton and Hartland communities, being centrally located between them and their associated school districts. The park is located 1

Fillmore County Park’s primary service area is not within a walkable area due to the park location being within an expansive agricultural and parkland area, with gravel roadway as the primary transportation infrastructure. There is one residential subdivision that is adjacent to the eastern boundary of the park; access to the park will be walkable for these residents.

Site Development Plan

The entire 198-acre property was master-planned before the conceptual design of the project, to select the right site for

Phase I development and potential future phases. To do this, several alternate master plans were drafted and analyzed.



The property offers many opportunities: large open areas for playfield and passive use; woodlots and meadows for nature trails and hiking; and abundant areas for nature interpretation (see full-sized map in Appendix).

Based upon the foundation of the master plan, individual concept plans were developed for each “phase” of the park.

The overall site concept for the Fillmore County Park is a development plan for the entire 198 acre park consisting of Fillmore West (located on McClements Road and bordering the west side of Kellogg Road) and Fillmore East (located on McClements Road and bordering the east side of Kellogg Road).

The Fillmore east portion of the park includes the ‘Phase 1’ development area that will be partially funded by the Land and Water Conservation Fund grant, and a site concept for a ‘Phase 2’ with additional fields, a picnic shelter and area with additional parking and access to the property.

The remainder of the ‘east’ portion of the property outside of the immediate Phase 1 development area is set aside as a future phase of the park with design and activities to be determined. Phase 1 will include a 5k (3.1) mile trail in this area of the property (see full-sized map in Appendix).



The Fillmore West portion of the overall site concept borders the west side of Kellogg Road and will include open space for athletic fields, a future development area that could accommodate additional athletic fields or other open space uses as determined and as the need for additional recreational opportunities expand within and around Livingston County.

The existing farmhouse on the park property, located on McClements Road between Euler and Hacker Roads, is currently vacant. Until early March 2016 the farmhouse was occupied under the terms of a life lease, in accordance

with the original property conveyance from Raymond Fillmore. Now that this lease has terminated due to the death of the occupant, the future use of the farmhouse and accessory structures (barn, sheds) will be studied and a use will be determined. The structures may be retained as storage facilities for park operations and maintenance. These existing structures are well-separated from the project site; being approximately 1,000 feet away they do not represent an encumbrance on the property and will not pose issues for park operations.

It is anticipated that future development of the existing park property will be done in phases as funding and resources become available over time.

Phase 1 Development

The design concept for Phase 1 creates a focal core for the property in the form of a “traditional county park.” The Phase I project site is nearest to the areas from which most traffic will arrive at the Southeast corner of Kellogg and McClements Road intersection. This location also represents the best point of entry into the park for Phase I and subsequent phases. The Phase I project site is isolated

from neighboring residential areas, but is adjacent to the neighboring Camp Chaldean to the south. High-quality natural areas are accessed via the 5K trail that traverses open meadow, fields, woodlots, and skirts wetlands.

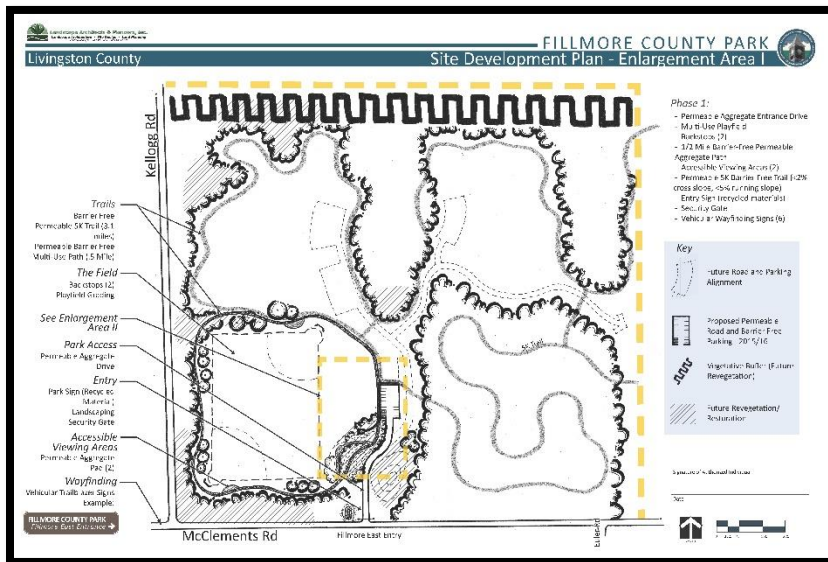
Park amenities will include: a 360' x 225' multi-purpose playing field for baseball, softball, soccer, lacrosse, flag football, kickball, and outdoor special events; a gravel drive and 22 space parking lot; an accessible unisex waterless bathroom; and a 5K natural-surface trail (see full-sized map in Appendix).

The 5K natural surface trail will loop the perimeter of Fillmore East creating a varied experience for walkers, hikers, runners, nature enthusiasts, and cross country events. The trail will have a safe and natural surface with woodchips in low areas. Environmentally-friendly materials include aggregates, wood composite posts, and wood chips. Signage for entry, wayfinding and LWCF will be present.

Accessibility Evaluation

A critical component in planning for recreation facilities is providing barrier-free/universal access in order to accommodate the needs of all people, including those with disabilities. The 2010 ADA Standards for Accessible Design was used as a reference to rank the overall accessibility of Fillmore County Park. This ranking system is described as follows:

1. None of the facilities meet accessibility guidelines
2. Some of the facilities/park areas meet accessibility guidelines



3. Most of the facilities/park areas meet accessibility guidelines
4. The entire park meets accessibility guidelines
5. The entire park was developed/renovated using the principle of universal design.

It is anticipated that Phase 1 construction of Fillmore County Park should be completed by June 1, 2019. When development plans are compared to the 2010 ADA Standards for Accessible Design, Phase 1 of Fillmore County Park should rank as follows:

Fillmore County Park Accessibility Ranking	
Ranking	Comments
3	The park has a trailhead/parking area that meets some accessibility guidelines such as a level gravel parking surface and designated handicap parking spaces. A paved path connects parking to a barrier-free restroom and trail head display case. Additionally, all trails within the interior of the park are natural surfaced trails that should not impair mobility.

During the process of applying for MDNR grant funds, the Livingston County Planning Director and a Parks & Open Space Advisory Committee member met with an accessibility consultant from the Ann Arbor Center for Independent Living. Together we reviewed the site concept maps and determined several design details that could enhance the accessibility and universal design of Phase 1 development, including:

Parking Lot

- The 2 south-western most parking spaces in the proposed parking lot should be van accessible with 8’ wide parking lanes and an 8’ aisle between the spaces. “Accessible Parking” signs should clearly mark these spaces, in particular the van accessible space should be signed as such to the left of the access aisle.
- Parking bumpers should be placed in front of all the spaces, between the parking space and the adjacent accessible trail so that vehicles do not encroach on the pathway.

Accessible Pathway and earthen 5K Trail

- The crushed aggregate accessible path that will connect the parking lot to the accessible restroom will need to be feathered into a sloped portion of the accessible concrete pad that the restroom will be sited upon so that these two surfaces create a seamless transition.
- The grade of the aggregate surfaced trail should be raised slightly from the grade of the surrounding ground to promote positive drainage away for the path, but at the least slope and cross slope possible.
- The Parks & Open Space Committee should consider extending the accessible restroom pathway to a viewing area next to the sports field.
- The placement of benches along the accessible pathway should be considered in future phases of development. Wherever a bench is sited, it should be adjacent to a 5’x5’ area for wheelchair use and viewing that does not interfere with use of the pathway.
- For greater accessibility for all persons, the earthen 5K trail that is planned for Phase 1 development should be free of all obstructions including roots, and other natural hazards, to eliminate trip hazards.

- The 5K trail should provide an additional shortcut connector trail that will shorten the distance for users so that they can more readily return to parking or the restroom.
- Signage with raised lettering and large typefonts should designate the distance traveled on the 5K trail and the distance back to the start of the trail.

Other

- If picnic tables are planned for future phases of development, they should be of a design that accommodates a wheelchair at the table surface and benches and tabletops that do not contain sharp corners.
- Any future picnic grills should be surrounded by an accessible surface that allows a wheelchair user to change their position in relation to the grill, in order to move out of cooking smoke.

All of the design details suggested by the Ann Arbor Center for Independent Livingston were incorporated into the final constructions plans for the park, with the exception of the accessible trail and viewing area, due to cost restrictions.

The Livingston County Parks and Open Space Advisory Committee will maintain a relationship with the Ann Arbor Center for Independent Living and will seek their counsel as plans and construction of Fillmore County Park progress (see Appendix for full letter of review from Ann Arbor Center for Independent Living)

Ecological Evaluation

The County Planning Department partnered with the Huron River Watershed Council to conduct a bio-reserve assessment of the park so that the natural features of the site were documented and the information could be used for future grant writing.

The bio-reserve assessment was conducted by the Huron River Watershed Council (HRWC) on May 13, 2014. HRWC ranked Fillmore East (120 acres on the east side of Kellogg Road) and Fillmore West (80 acres on the west side of Kellogg Road) for 15 ecological criteria. Rankings for each criterion range from 0 to 100. The total scores were as follows:

- Fillmore East = 300

- Fillmore West = 350

This places both sites in the lower range for all the bioreserve sites in the Huron River Watershed ranging from 25 to 1244. The main differences between the two were that Fillmore East got slightly more points for being better connected to other natural areas and Fillmore West got points for being less ecologically disturbed than Fillmore East (Fillmore East got zero points for this due to former farming of land).

There are six (6) different ecosystems that were assessed:

Fillmore East (120 acres):

- **Wetland A (#2)** – largest wetland in park at 31 Acres, ranked #2 for ecological integrity of three wetlands in park, the wetland vegetation has distinct zones and includes: open water, shrub area and forest swamp area.
- **Forest B (#3)** - one of two 11 acre forests in park (Also Forest A), ranked #3 for ecological integrity of three forests in park, no single size of tree really dominates this forest although medium-sized trees (6-10 inches

diameter), small trees (2-6 inches diameter), and saplings are most abundant. This area is a former old field and dump.

- **Forest C (#2)** – 10 Acres in size, ranked #2 for ecological integrity of three forests in park very large trees (>18 inch diameter) and large trees (>10 inch diameter) dominate the forest, with medium-sized trees also abundant.

Fillmore West (80 acres):

- **Wetland B (#3)** – smallest wetland in park at 7 Acres, ranked #3 for ecological integrity of three wetlands in park, the wetland vegetation has distinct zones and includes: open water, shrub area and forest swamp area.
- **Wetland C (#1)** – 11 Acres in size, ranked #1 for ecological integrity of three wetlands in park, the wetland vegetation has no distinct zones and includes: open water, a forb/wildflower area, a shrub area, and a forest swamp area.

- **Forest A (#1)** – one of two 11 acre forests in park (Also Forest B), ranked #1 for ecological integrity of three forests in park, it has a mixture of tree sizes, standing dead trees, large rotting logs, fallen trees and branches, and contains wetland characteristics such as bare muddy areas.

The assessment also defines many terms, explains the values of various ecosystems, and lists the various species of vegetation in each wetland and forest. The report concludes with some tips regarding what can be done about invasive plants.

Further ecological evaluation by Livingston County Planning Department includes the following results:

- The Soil Survey of Livingston County indicates that the topography of the park property ranges from a low of 975 feet above sea level at the southwest corner of the property, to a high of 1000 feet above sea level at the southeast corner of the property and other various locations. The soils on site are predominantly well-drained loams with slopes of 12% or less.

- According to Livingston County’s High-Quality Natural Areas report, Fillmore County Park contains two (2) Priority 2 natural areas. One of these areas is located on Fillmore West and totals approximately 26 acres. The second Priority 2 natural area is located on and adjacent to East Fillmore. Finger like projections extend onto the northern portion of the 40 acre portion of park property and cover the western portion of the 80 acre parcel. In total this area is 44 acres in size. Priority 2 natural areas are generally located near other natural areas, are relatively large in area, or they are diverse in natural resources.

MDNR Grant Fund Status

In 2016, with assistance from Landscape Architects and Planners (LAP), the Livingston County Parks and Open Space Advisory Committee (POSAC) submitted three grant applications for Phase I development of Fillmore County Park to the Michigan Department of Natural Resources. Grant applications were submitted for the Trust Fund, Passport and Land & Water Conservation Fund grant programs. In

December 2016, Livingston County was notified that they had been awarded a three-year \$86,000 Land and Water Conservation Fund (LWCF) grant. With the required 50% match, the total grant project cost is \$172,000. The time period for this grant will conclude March 31, 2020. Additional matching funds have since been added to the project and the total estimated project cost is \$260,000 including design, construction and in-kind services.

Since the time of this award, several action steps have taken place, including:

- Completion and approval of State of Michigan project agreement documents
- Site plan drawings and revisions
- Construction bid process
- Genoa Township rezoning
- Genoa Township site plan review
- Award of construction contract

Park Partnerships

As Livingston County began making development plans for Fillmore County Park, several partnerships were cultivated including:

- Genoa Township – Representatives of the home community of Fillmore County Park have been involved in the master planning of the park, as well as site plan review.
- Camp Chaldean – Periodic visits with the camp manager and representatives of the Chaldean Catholic Church diocese, has cultivated a good relationship for future recreational collaboration between our adjacent park properties.
- Municipal partners – Three (3) municipal partners within the primary service area of the park have financially contributed towards the match portion of Livingston County’s Land and Water Conservation Fund grant. These partners include: Genoa and Marion Townships and the City of Howell.
- Recreational Memorandum of Understanding – The Howell Area Parks & Recreation Authority and the Southeast Livingston County Recreation Authority

have a memo of understanding with the Livingston County Parks & Open Space Committee for the programming of sports activities at Fillmore County Park once Phase I is complete.

- Livingston County Departments – In-kind services for Fillmore County Park have been pledged by several Livingston County Departments such as: The Sheriff Department; Drain Commission; and Road Commission. Facilitation and maintenance of this park will be handled by the Facility Services and Planning Departments in an on-going manner.
- Livingston County Foundation – This 503 (c)(3) foundation acts as the fiduciary for Livingston County Parks

Park Photos

Farmstead:



Farmstead:



Fillmore West:



Fillmore East: Phase I development area (Southwest corner of Kellogg and McClements Roads):



Fillmore East: Phase I development area



Fillmore East: Part of 10 acre forested area



Fillmore East: High quality forested wetland



Fillmore East: Forest boundary



VI. DESCRIPTION OF PLANNING AND PUBLIC INPUT PROCESS

Planning Process

Preparation of this five-year Parks and Open Space Plan update began in the early fall of 2018. This planning process was concurrent to Livingston County Planning Department and Planning Commission finalizing a large-scale, 2 ½ year process of drafting a new Livingston County Master Plan.

2018 Livingston County Master Plan

The 2018 Livingston County Master Plan provided another opportunity for local residents to share their opinions on the parks and recreation needs of the county.

Public master plan workshops regarding development preferences, mapping of opportunities and constraints, and visioning yielded results that were also beneficial to the process of drafting the five-year Parks and Open Space Plan. The parks and recreation chapter of the master plan includes

the identification of issues relevant to Livingston County parks and recreation needs along with various current trends and best management practices in the field of recreation. Interactive mapping of trails throughout Livingston County, developing greenways with biking paths, and planning for health were issues that were identified throughout the master planning process with feedback from various local residents and groups.

The 2018 Livingston County Master Plan was adopted at the October 17, 2018 Livingston County Planning Commission meeting and is considered a support document to the 2019-2023 Livingston County Parks and Open Space Plan.

Livingston County Outdoor Network (LivON)

In May of 2018, a new collaborative was created to bring together the many partners that are involved in parks, trails, and conservation efforts. The Livingston County Outdoor Network (LivON) was initiated by the Livingston County Planning Department, the Huron Clinton Metropark Authority, and the Michigan Department of Natural Resources. This collaborative group is modeled after the Oakland County,

Michigan collaborative called TWLA (Trails, Water, and Land Alliance).

The purpose of the collaborative is to improve the planning and coordination of parks and recreational resources in Livingston County and to have a collective impact on local projects by working together. This planning effort has contributed to the understanding of park and recreation issues in Livingston County and therefore to the body of work within this Parks and Open Space plan.

Recreation Standards

Livingston County is fortunate to be home to many State of Michigan parks and game areas, as well as Huron-Clinton Metroparks that meet the Regional/Metropolitan Park classification of the Recommended Classification System For Local and Regional Recreation Open Space and Trails (see appendix for this MDNR recommended classification chart).

The classification for County parks is not as clear according to this classification system. Given that the Huron-Clinton

Metroparks Community Recreation Plan 2018-2022 classifies their parks as Regional/Metropolitan for a five-county service area of approximately 4.4 million people, Livingston County Parks must be classified as a smaller system of Large Urban Parks.

The following description of Large Urban Parks is very explanatory of Lutz and Fillmore County Parks:

Large urban parks serve a broader purposed than community parks and are used when community and neighborhood parks are not adequate to serve the needs of the community. Focus is on meeting community-based recreational needs, as well as preserving unique landscapes and open spaces.

Additionally, the size criteria for Large Urban Parks is usually a minimum of 50 acres, with 75 or more acres being optimal; this size criteria is very much in line with the current 100 acres of recreation in Lutz County Park and 120 acres of recreation that is currently being developed in Fillmore County Park.

Public Input Process

The public input process was an important component of updating the 2019 – 2023 Livingston County Parks & Open Space Plan. Public input helped formulate goals and objectives and prioritize future parks and open space activities. The various methods used to solicit public input in our recreation planning process are summarized below.

Livingston County Parks & Open Space Advisory Committee

During the approximate six month period of drafting the 2019-2023 Livingston County Parks & Open Space Plan, the Parks and Open Space Advisory Committee (POSAC) routinely discussed and critiqued the chapters of the plan as they were drafted by county planning staff. Committee members were particularly diligent in revising the goals & objectives of the current 2012 plan, so that they were relevant to committee actions now and into the future for the 2019-2023 plan.

Livingston County Parks & Recreation Opinion Survey

Integral to the public input process was a survey that was widely distributed through e-mail notices to representatives of local government, the media and the Livingston County website and Facebook page.

The Livingston County Planning Department developed a ten question survey that successfully polled 204 local residents and other governmental decision makers to gauge their knowledge of county owned parks and to gather data regarding types of recreational activities that would be of interest to them. The on-line survey was open from August 3 through September 7, 2018.

Responses to the survey were received from 19 of the 20 local units of government in Livingston County (there was no response from Putnam Township). Genoa Township, which is the home community of Fillmore County Park, had the highest response rate; 11.76% of all 204 responses or 24 respondents.

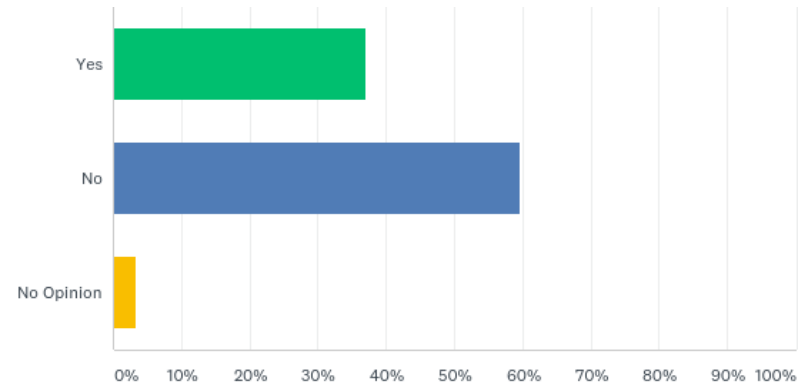
Approximately 3.43% of respondents were not county residents, but were employed or had another association with Livingston County such as student or business owner (full survey with results can be found in the appendix of this plan).

Survey Results

In summary, the ten questions of the survey revealed the following:

1. Do you think there are enough parks, open space, and recreation areas available to residents of Livingston County?

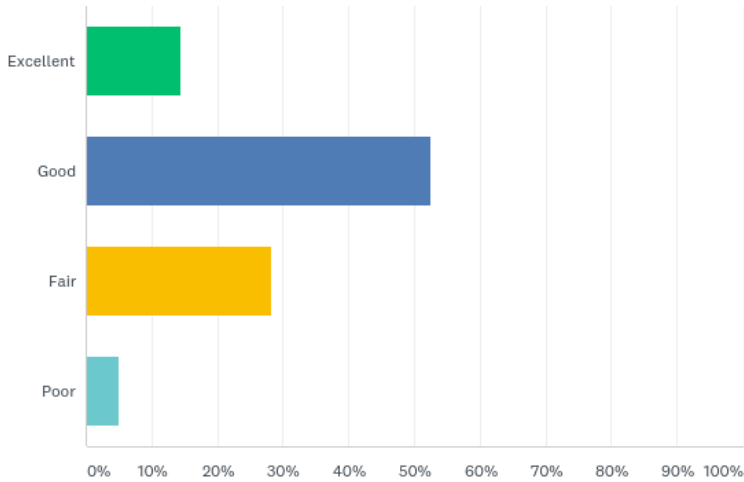
Answer Choices	Responses %	Responses #
Yes	36.95%	75
No	59.61%	121
No Opinion	3.45%	7
Total # Of Persons Responding		Answered = 203 Skipped = 1



2. What is your opinion of the overall quality of recreation opportunities available to Livingston County residents?

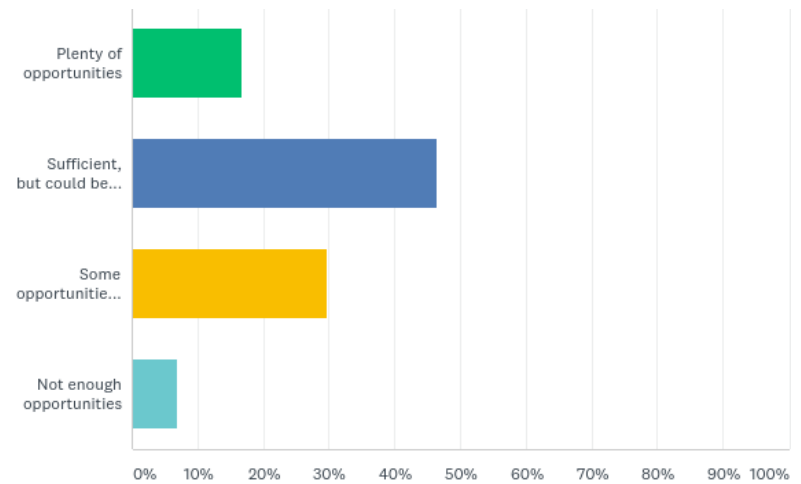
Answer Choices	Responses %	Responses #
Excellent	14.36%	29
Good	52.48%	106
Fair	28.22%	57
Poor	4.95%	10
Total # Of Persons Responding		Answered = 202 Skipped = 2

(survey question #2 continued)



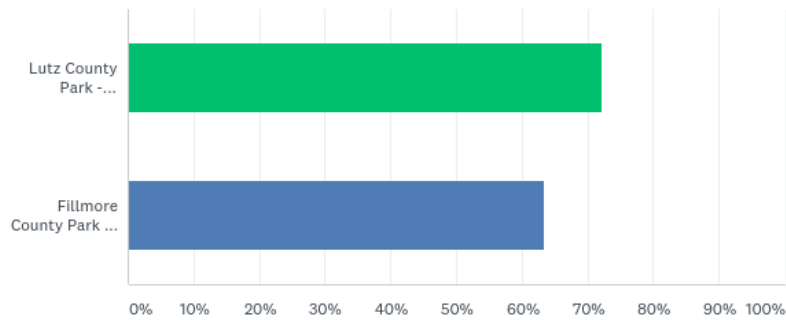
Answer Choices	Responses %	Responses #
Plenty of opportunities	16.83%	34
Sufficient, but could be better	46.53%	94
Some opportunities, but more are needed	29.70%	60
Not enough opportunities	6.93%	14
Total # Of Persons Responding	Answered = 202 Skipped = 2	

3. How would you rate the overall quantity of recreation opportunities available in Livingston County?



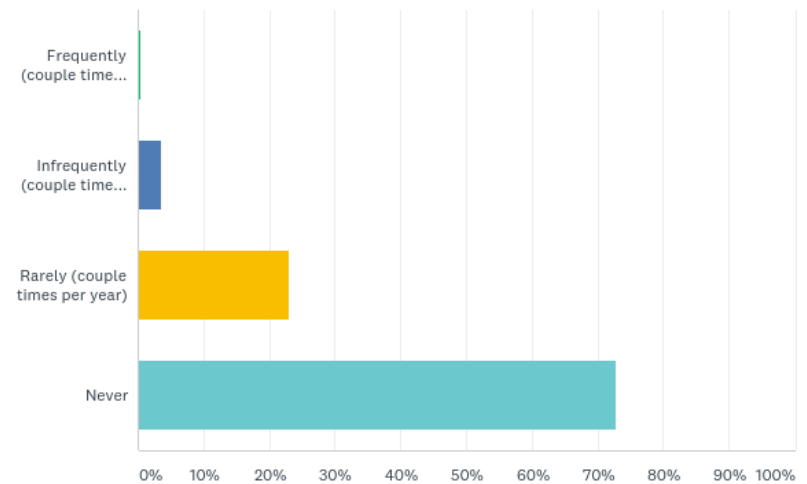
4. Which of the Livingston County owned park properties have you heard about?

Answer Choices	Responses %	Responses #
Lutz County Park	72.22%	91
Fillmore County Park	63.49%	80
Total # Of Persons Responding	Answered = 126 Skipped = 78	



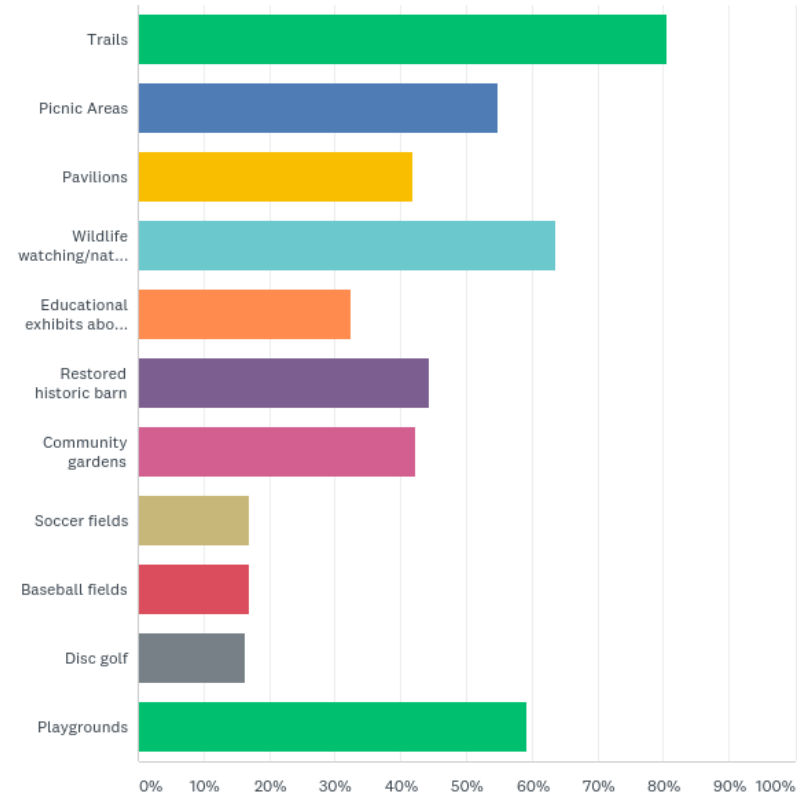
5. How frequently do you visit Lutz Park in Deerfield Township?

Answer Choices	Responses %	Responses #
Frequently (couple times per week)	.50%	1
Infrequently (couple times per month)	3.52%	7
Rarely (couple times per year)	23.12%	46
Never	72.86%	145
Total # Of Persons Responding	Answered = 199 Skipped = 5	

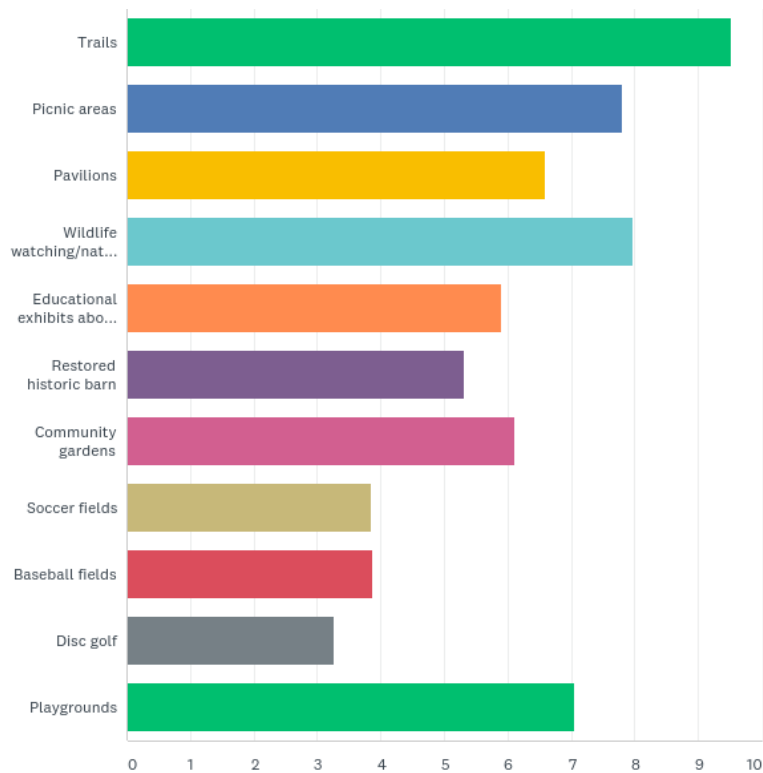


6. Which of the following activities would interest you if you visited Livingston County owned parks?

Answer Choices (in order of # of responses)	Responses %	Responses #
Trails	80.60%	162
Wildlife watching/ nature interpretation	63.68%	128
Playgrounds	59.20%	119
Picnic Areas	54.73%	110
Restored historic barn	44.28%	89
Community gardens	42.29%	85
Pavilions	41.79%	84
Educational exhibits about agriculture	32.34%	65
Soccer fields	16.92%	34
Baseball fields	16.92%	34
Disc golf	16.42%	33
Total # Of Persons Responding	Answered = 201 Skipped = 3	

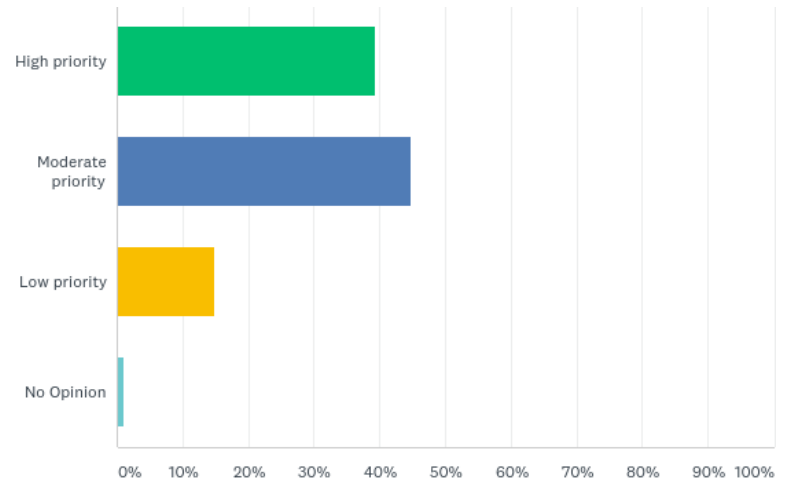


7. Prioritize your preference for outdoor activities listed in question #6, with 1 = most preferred and 11 = least preferred. (Note: numeric table is in appendix due to size).



8. How high of a priority should Livingston County government place on developing new parks or facilities?

Answer Choices	Responses %	Responses #
High priority	39.41%	80
Moderate priority	44.83%	91
Low priority	14.78%	30
No Opinion	0.99%	2
Total # Of Persons Responding		Answered = 203 Skipped = 1



9. What village, city, or township do you reside in?

Answer Choices (Township)	Responses %	Responses #
Brighton Township	9.31%	19
Cohoctah Township	3.92%	8
Conway Township	1.96%	4
Deerfield Township	1.47%	3
Genoa Township	11.76%	24
Green Oak Township	2.45%	5
Hamburg Township	6.86%	14
Handy Township	1.96%	4
Hartland Township	9.31%	19
Howell Township	6.37%	13
Iosco Township	.98%	2
Marion Township	11.27%	23
Oceola Township	8.82%	18
Putnam Township	0.00%	0
Tyrone Township	1.96%	4
Unadilla Township	1.47%	3

Answer Choices (City and Village)	Responses %	Responses #
City of Brighton	4.90%	10
City of Howell	9.80%	20
Village of Fowlerville	1.47%	3
Village of Pinckney	0.49%	1
Do not reside in Livingston County, I am a business owner/employed in county/student	3.43%	7
Total # Of Persons Responding		Answered = 204 Skipped = 0

10. What sport or activity do you feel is missing from parks in Livingston County?

This was an open-ended survey question. There were 157 responses received, however many respondents gave multiple answers. Following is a compilation of recreation answers by similarity, and arranged by the most answers to the least answers. At the end of the table are alternative answers such as “None” or “No Comment”.

2019 - 2023 LIVINGSTON COUNTY PARKS & OPEN SPACE PLAN

Answer Choices (Township)	Responses #
Splash Pad	51
Trails (hiking, running, fitness and biking)	34
Swimming/Community Pool	13
Mountain Biking/BMX Biking	6
Ice Skating	5
Playgrounds	5
Dog Parks	5
Water Park	4
Passive Nature Park	4
Disc Golf	4
Soccer Fields	3
Bike Paths For Transportation	3
Game Areas (horseshoe pits, cornhole, etc.)	3
Canoeing/Kayaking	2
Open Play Areas/Kite Flying	2
Gym (basketball, volleyball etc)	2
Golf	2
Baseball	2
Educational Exhibits/Courses	2
Parks For Persons With Disabilities	2

Rental Pavilions	1
Working Farm	1
Tennis	1
Horse Trails	1
Live Music	1
Fishing	1
In-line Skating	1
Hockey	1
Rock Climbing	1
Sand Play	1
Senior Citizen Activities	1
Downtown Howell Park	1
Wildlife/Photography Area	1
Picnic Area	1
Hunting	1
Camping	1
Ninja Course	1
Spelunking	1
Community Gardening	1
Acquiring & Developing more County parkland	1
Dump the Park Authorities	1

All	1
Peace	1
None	14
No Comment	4
No Sports	4

Summary of Survey Results

Some of the “take-aways” from this survey were:

- Over half (60%) of survey respondents do not think there are enough parks, open space, and recreation areas available to residents of Livingston County.
- Most survey respondents (67%) think that the overall quality of recreation opportunities available to Livingston County residents is good or excellent.
- Nearly half of survey respondents (47%) think that the overall quantity of recreation opportunities in Livingston County is Sufficient, but could be better.
- Most survey respondents have heard of Lutz County Park (72%).
- Over 63% of survey respondents have heard of Fillmore County Park.

- Most survey respondents (73%) have never visited either Lutz or Fillmore County Park!!
- The top five activities that survey respondents would find interesting in a County Park are: 1.) Trails; 2.) Wildlife Watching/Nature Interpretation; 3.) Playgrounds; 4.) Picnic Areas; and 5.) Restored Historic Barn.
- When survey respondents prioritize their preferences for outdoor activities, they priority list is as follows: Trails; Wildlife Watching/Nature Interpretation; Picnic Areas; Playgrounds; Pavilions; Community Gardens; Educational Exhibits; Restored Historic Barn; Baseball; Soccer; Disc Golf.
- Most survey respondents feel that Livingston County government should place a high (39%) or moderate (45%) priority on developing new parks or facilities.
- Most survey respondents live in Genoa, Marion, Brighton, and Hartland Townships and the City of Howell. Nineteen out of twenty communities in Livingston County had residents that responded to the survey.

- Lastly the top five sports or activities that respondents feel are missing from parks in Livingston County are: 1.) Splash Pads; 2.) Trails; 3.) Swimming/Community Pools; 4.) Mountain Biking/BMX Biking; and 5.) Ice Skating.

Public Comment Period

The public comment period for this plan began on February 11, 2019. On this date a notice of the availability of the plan for public comment was posted at the Livingston County Administration Building, and the Livingston County Courthouse. A notice of the public comment period and a link to the plan, was also posted on the Livingston County website and Facebook page. A news blast regarding the public comment period with a link to the draft document, was sent to the 400+ persons on the Livingston County email list (primarily government officials and appointees). A physical copy of the plan was displayed on the front counter of the Livingston County Planning Department. An explanation of how the public should comment on the plan was included in all postings and physical copies (see appendix for the notice of the

public comment period, news blast and a recording of public comments).

Public Hearings

The public hearing for the plan was held at the monthly meeting of the Livingston County Planning Commission on March 20, 2019 at 6:30 p.m. in the Livingston County Board of Commissioners Chambers at 304 East Grand River Avenue in Howell. The public hearing was advertised in the Livingston County Press & Argus newspaper and noticed as a public hearing by the same means as the public comment period (website, Facebook, etc.). The public hearing was conducted by the Livingston County Planning Commission and County Planning Department Staff. At the public hearing County Planning Staff presented a power point slide show about the components of the plan. In addition to verbally public comments at the public hearing, participants were allowed to submit their written comments in a comment box. Participants at the public hearing were notified of the March 25, 2019 Board of Commissioners meeting at which the adoption of the plan would be considered (see appendix for the public hearing

advertisement, recording of public comments and public hearing minutes).

After Livingston County Planning Staff incorporated the public comments into the plan, it was brought by resolution to the Livingston County Board of Commissioners for adoption on March 25, 2019 (see appendix for a copy of the resolution of adoption and Board of Commissioners meeting minutes).

VII. GOALS AND OBJECTIVES

Policy Statement

To provide outdoor recreation opportunities to Livingston County’s residents and guests, while protecting and enhancing the County’s natural resources, wildlife habitat, and rural heritage, and while coordinating with other public and private park and open space efforts. These opportunities will be designed to serve people of all segments of the community and future generations while respecting the financial and other resource constraints of County government.

Goals of the Parks & Open Space Advisory Committee

Goal A: Carry out the directives of Livingston County Board of Commissioners resolution number 105-039, which authorized the creation of the Livingston County Parks and Open Space Advisory Committee.

1. Objective: Serve as a liaison to the Board of Commissioners.
2. Objective: Report regularly to the Board via Board members serving on the Committee, regular or special Committee meetings, or Board meetings.
3. Objective: Provide input and advice to the Board of Commissioners as to the immediate and long-term use and development of land and other activities related to parks and open space.

Goal B: Coordinate parks planning with the Livingston County Foundation Board.

1. Objective: Serve as a liaison to the Foundation Board.
2. Objective: Report regularly to the Foundation Board via Board members serving on the Board and County Planning staff.
3. Objective: Meet mutual expectations for park planning and development.

4. Objective: Promote awareness of the Livingston County Foundation as a Michigan non-profit corporation and charitable trust, and as a planned giving option for potential donors.

Goal C: Prepare a County Parks & Open Space Plan that is coordinated with the County Master Plan, and supports potential recreation grant applications.

1. Objective: Prepare updates to the Parks & Open Space Plan every 5 years to keep the plan current with the Michigan Department of Natural Resources, and to maintain eligibility for recreation grants.
2. Objective: Identify the best uses for individual parks or open space properties based on such factors as location, natural features, and donor intent, and prepare a customized action plan for each.
3. Objective: Utilize County Planning staff for plan writing and updating, and grant writing

services. Utilize outside consultants when their specific technical expertise is warranted.

4. Objective: Develop plans that are based on periodic recreational needs assessments, input from the public and stakeholders, and that offer opportunities for grant support from outside agencies and foundations.

Goal D: Preserve rural character, wildlife habitat, water quality, biodiversity, and environmentally sensitive areas when grant or other funding opportunities allow.

1. Objective: Support the preservation of environmentally sensitive lands, through acquisition or other means, which protect wildlife and plants, water quality and riparian areas, and hazard-prone areas from inappropriate human activities and development.
2. Objective: Provide exhibits or events that educate the public on the importance of the

natural characteristics targeted for preservation by this goal, and how they may be conserved.

Goal E: Build mutually beneficial relationships with: public and private providers of parks, recreation, open space, and agriculture; and community service, foundation, or other appropriate groups to improve, protect and promote use of parks and open spaces county-wide.

1. Objective: Keep these groups up-to-date on County park and open space acquisitions, development, and park planning activities.
2. Objective: Coordinate the development plans for County parks and open spaces with the local units of government in which County property is located.
3. Objective: Explore and develop opportunities for private foundation, donor or philanthropic support for park, recreation or open space projects.
4. Objective: When appropriate, partner with other groups to provide facilities or services that

are beyond the reach of either group alone, but are mutually beneficial to both, and meet the goals of this plan.

5. Objective: Provide technical assistance and review of local park plans when requested by local governments, to ensure compatibility with County parks and open space goals.
6. Objective: Upon request, provide planning information or advice to local units of government or other groups who may benefit from the County's resources.

Goal F: Consider additional land for parks or open space through grants, and through donations by those desiring to leave a permanent public legacy, for the benefit and enjoyment of County residents and guests.

1. Objective: Work cooperatively with those interested in donating land, to make the process as easy, fast, and advantageous as possible for the donor(s).
2. Objective: Be good stewards of donated land, and prepare and implement an action plan for

each donated property that respects the wishes of the donor(s), in order to encourage future donations.

3. Objective: Identify possible grant and donor sources and pursue appropriate opportunities.
4. Objective: Promote awareness of the Livingston County Foundation as a Michigan non-profit corporation and charitable trust formed to receive bequests and contributions of both real and personal property, as well as monetary donations that may be designated to the benefit of Livingston County parks.
5. Objective: Integrate development options into the County Capital Improvement Plan in order to allow funds to be secured through external sources.
6. Objective: Comply with the Parks and Open Space Advisory Committee Guidelines for Recommendations Regarding Donations of Real

Property to Livingston County for Public Park Use.

Goals of Lutz County Park

Goal G: Acquire, maintain and enhance park facilities and natural resources to provide high quality recreation within Lutz County Park.

1. Objective: Increase visibility and park recognition through signage, trailhead information, and Livingston County website and social media.
2. Objective: Enhance recreation opportunities in park by improving hiking and picnic facilities for persons of all physical abilities.
3. Objective: Maintain and enhance the quality and vitality of natural resources in park by implementing sound ecological practices.
4. Objective: Restore and maintain the Lutz farmstead and outbuildings.

Goal H: Promote public awareness of Lutz County Park and build mutually beneficial relationships with public and private park and recreation providers.

1. Objective: Develop a community volunteer program to assist in park maintenance and provision of park activities.
2. Objective: Develop and promote programs that increase public awareness and usage of the park; partner with other organizations or agencies to help accomplish this objective.
3. Objective: Enhance communication and cooperation with MDNR regarding adjacent parkland.
4. Objective: Enhance communication and cooperation with Deerfield Township to avoid duplication of recreation facilities within the township, and to supplement the park and open space efforts of each governmental unit.

Goal I: Secure and maintain leaseholders for the Lutz County Park property.

1. Objective: Work with current and future agricultural lease holders of park property to promote sound ecological practices in the park.
2. Objective: Where reasonable and appropriate, maintain current rental agreements for facilities located on park property.

Goals of Fillmore County Park

Goal J: Secure and maintain caretakers for the Fillmore County Park property.

1. Objective: Where reasonable and appropriate, maintain current rental agreements for facilities located on park property.

Goal K: Build mutually beneficial relationships with public and private park and recreation providers to help establish Fillmore County Park.

1. Objective: Maintain good communication and cooperation with Genoa Township to avoid duplication of recreation facilities within the

township, and to supplement the park and open space efforts of each governmental unit.

2. Objective: Maintain good communication and cooperation with the Chaldean Catholic Church to foster the sharing of parks and open space opportunities on adjacent parkland.
3. Objective: Develop mutually beneficial partnerships with the Howell Area Parks and Recreation Authority and Southeast Livingston Recreation Authority for programming, operating and maintaining recreational facilities.
4. Objective: Develop a community volunteer program to assist in park maintenance and provision of park activities.

Goal L: Acquire and maintain park facilities and natural resources to provide high quality recreation within Fillmore County Park.

1. Objective: Construct Phase I development of park.

2. Objective: Open park to public usage.
3. Objective: Increase visibility and park recognition through signage, trailhead information, and Livingston County website and social media.
4. Objective: Maintain and enhance the quality and vitality of natural resources in park by implementing sound ecological practices.
5. Objective: Explore and develop opportunities that increase awareness and usage of the park.

Goal M: Plan for future phases of development that provide high quality recreation within Fillmore County Park.

1. Objective: Utilize Fillmore County Park master plan as a base document for future park development; periodically review master plan and revise as necessary to reflect current and anticipated future needs.
2. Objective: Evaluate current park usage and obtain public and stakeholder input to envision

and plan for future usage of Fillmore County
Park.

VIII. ACTION PROGRAM

The following action plan chart provides planned projects for the next five years, listed by committee and/or park. The chart provide the letter (i.e. A, B, C) that identifies the Goal and its associated objectives, a summary of the project and a description of the project, as well as the cost, funding source and the year that the goal & objectives will be undertaken.

Goal	Project	Description	Cost	Funding Source	Action Year(s)
Goals of the Parks & Open Space Advisory Committee (POSAC)					
A	Communication with the Livingston County Board of Commissioners	Communicate to the Board as a liaison between POSAC and the Board. Report regularly to the Board and provide input and advice to them regarding park matters.	\$0	In-kind POSAC	2019-2023
B	Coordinate parks planning with the Livingston County Foundation Board	Serve as a liaison between POSAC and Foundation Board. Report regularly to the Board and meet mutual expectations for park planning & development.	\$0	In-kind POSAC	2019-2023

Goal	Project	Description	Cost	Funding Source	Action Year(s)
C	Prepare a County Parks & Open Space Plan that is coordinated with the County Master Plan and supports recreation grant applications	Prepare an update to the 5 yr. recreation plan before the sunset of current plan	\$0	General Fund, staff costs	2023
		Update customized plans for each county park as needed.			2023
		Prepare and submit recreation grants for the committee as needed			2020-2023
		Continue to assess need for County parks and garner public input.			2023
D	Preserve rural character, wildlife habitat, and environmentally sensitive areas	Explore acquisition or other means of protecting land. Provide exhibits or public education events on natural resource preservation.	\$0	General Fund, staff costs	2019 – Natural Features Inventory, A Master Plan project

2019 - 2023 LIVINGSTON COUNTY PARKS & OPEN SPACE PLAN

Goal	Project	Description	Cost	Funding Source	Action Year(s)
Goals of the Parks & Open Space Advisory Committee (POSAC)					
E	Build mutually beneficial relationships with public and private parks & rec. providers and other community groups.	Communicate POSAC activities. Coordinate park development plans with local government. Garner financial support. Partner with other groups to provide facilities & services. Offer technical assistance to local government	\$0	General Fund, staff costs and in-kind work of POSAC	2019-2023
F	Consider additional land for parks or open space through grants, and donations.	Work cooperatively with those interested in donating land while abiding by established donation guidelines. Prepare & implement an action plan for each donated property. Identify possible grant and donor sources. Promote awareness of the	\$0	General Fund, staff costs, and in-kind work of POSAC and Found. members	2019 – 2013

		Foundation. Integrate dev. plans into the County CIP.			
Goals of Lutz County Park					
G	Acquire, maintain and enhance park facilities & natural resources to provide quality recreation.	Increase visibility and recognition of park.	\$0	General Fund, in-kind staff cost	2019-2023
		Implement sound ecological practices.	TBD	Liv. County Found.	2019-2023
		Improve facilities for persons of all physical abilities	TBD Must be bid	Liv. County Found.	2020
		Restore and maintain the Lutz farmstead and outbuildings.	TBD Must be bid	Liv. County Found.	2019-2023
H	Promote public awareness of park and build mutually beneficial relationships with public and private park and recreation providers.	Develop a community volunteer program	\$0	General Fund, in-kind staff cost	2020
		Develop and promote programs that increase public awareness and usage of the park			2019
		Enhance communication and cooperation with DNR			2019-2023
		Enhance communication and cooperation with Deerfield.			2019-2023

2019 - 2023 LIVINGSTON COUNTY PARKS & OPEN SPACE PLAN

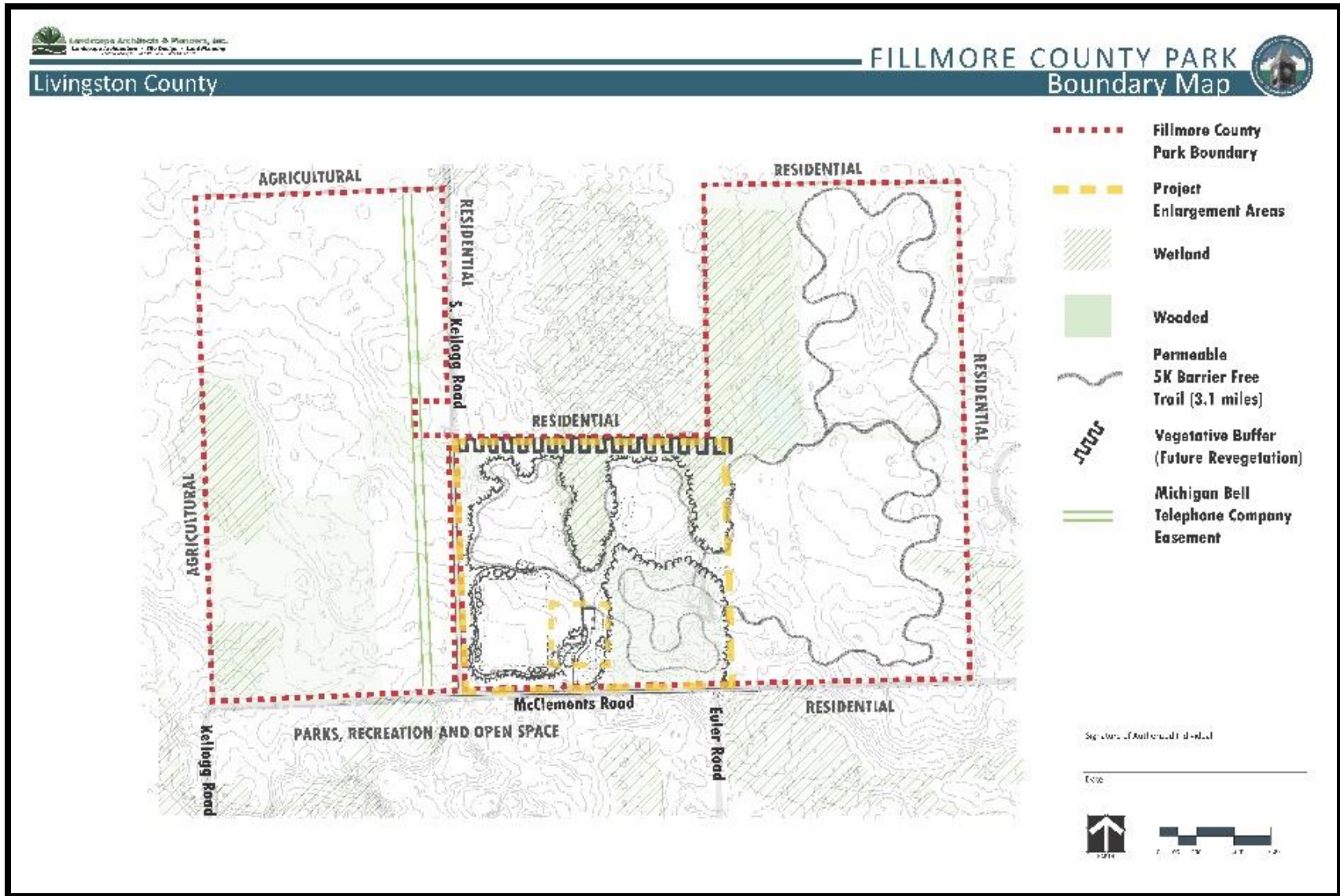
Goal	Project	Description	Cost	Funding Source	Action Year(s)
Goals of Lutz County Park					
I	Secure and maintain leaseholders for the park property.	Work with current and future agricultural lease holders of park property to promote sound ecological practices.	TBD	General Fund, in-kind staff cost. Potential for outside costs of consult.	2019-2023
		Where reasonable and appropriate, maintain current rental agreements for facilities on property.	TBD		2019-2023
Goals of Fillmore County Park					
J	Secure and maintain caretakers for the property.	Where reasonable and appropriate, maintain current rental agreements for facilities on property.	TBD	General Fund, in-kind staff cost. Potential for outside costs of consult.	2019-2023

K	Build mutually beneficial relationships with public and private parks & rec. providers to help establish park.	Maintain good communication and cooperation with: Genoa Township; and adjacent Chaldean Catholic Church Camp	\$0	General Fund, staff costs and in-kind work of POSAC	2019-2023
		Develop mutually beneficial partnerships with HAPRA and SELCRA			2019-2020
		Develop a community volunteer program			2019-2020
L	Acquire and maintain park facilities and natural resources to provide high quality recreation.	Construct Phase I development of the park and open to public usage.	\$229,505	LWCF grant and Liv. Co. matching funds	2019-2020
		Increase visibility and park recognition. Explore and develop opportunities that increase awareness and usage of park.	\$0	General Fund, staff costs and in-kind work of POSAC	2019-2023
		Maintain and enhance the quality and vitality of Natural resources in park.	TBD	Liv. County Found.	2019-2023

2019 - 2023 LIVINGSTON COUNTY PARKS & OPEN SPACE PLAN

Goal	Project	Description	Cost	Funding Source	Action Year(s)
Goals of Fillmore County Park					
M	Plan for future phases of development that provide high quality recreation within Fillmore County Park.	Utilize Fillmore County Park master plan as a base document; periodically review and revise plan.	\$0	General Fund, staff costs and in-kind work of POSAC and Liv. County Found.	2020-2023
		Evaluate current park usage and obtain public and stakeholder input to envision and plan for future usage of Fillmore County Park.			

Fillmore County Park Boundary Map



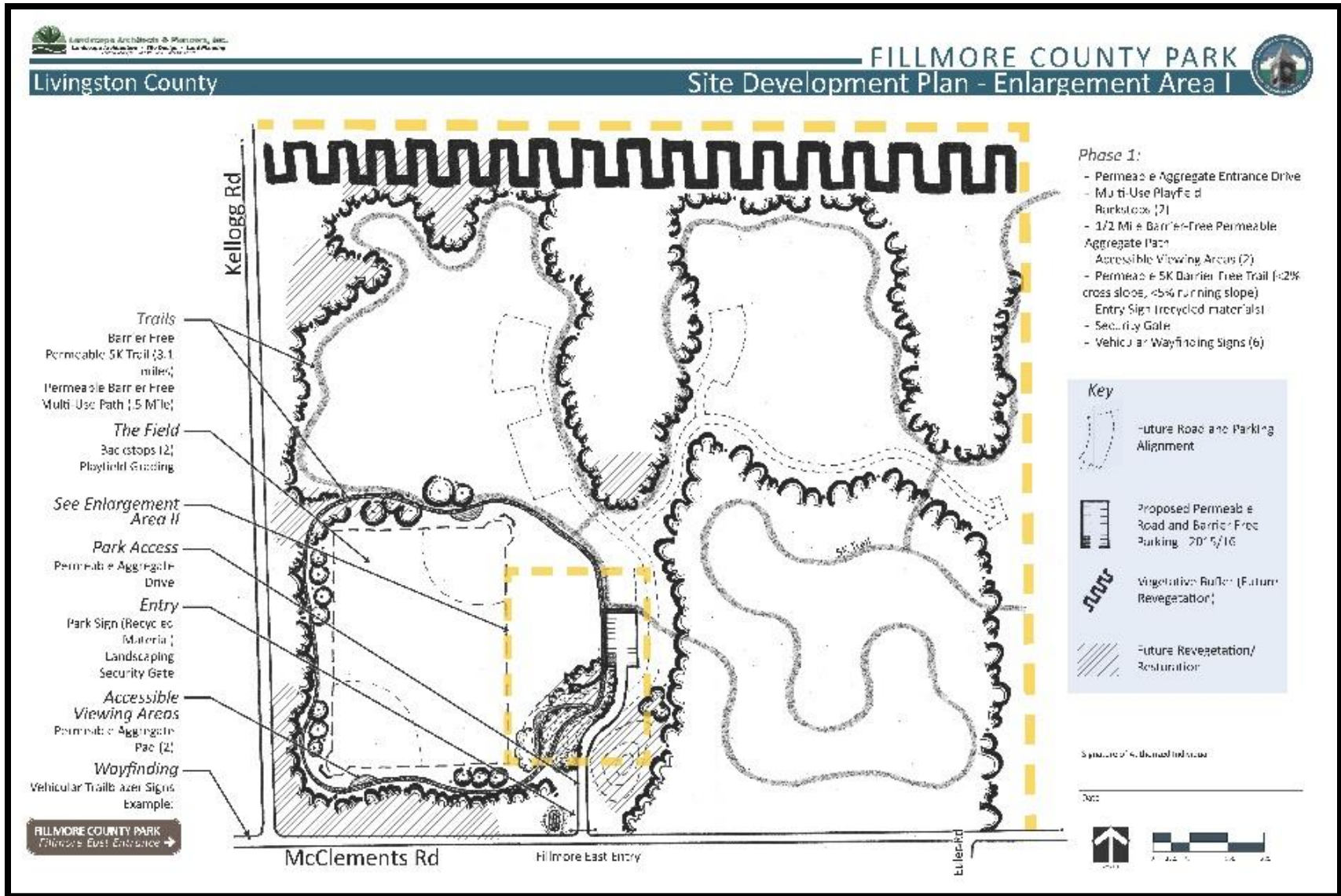
Fillmore County Park Overall Site Concept



Fillmore County Park Fillmore East Concept



Fillmore County Park Site Development Plan – Enlargement Area I



Fillmore County Park Accessibility Review from Ann Arbor Center for Independent Living



Dedicated to the success of children, youth, adults and seniors with disabilities at home, at school, at work and in the community since 1976.

March 26, 2014

Kathleen Kline-Hudson, Director
Livingston County Planning Department
304 East Grand River Avenue, Suite 206
Howell, MI 48843

Re: Fillmore County Park, Livingston County

Dear Kathleen,

It was a pleasure to meet with you and Mike Arens of the Livingston County Parks & Open Space Advisory Committee to hear of the Phase I development plans for Fillmore County Park in Genoa Township, Livingston County.

This letter is to express our strong support for the grant application submitted by Livingston County to obtain funds from the MDNR Trust Fund to initiate the development of Fillmore County Park. The Ann Arbor Center for Independent Living works with and on behalf of people who have disabilities to be successful at home, at school, at work, and in the community. Participation in and access to recreation is at the top of the list for full inclusion in the community. One in five people may have a disability. That said, development with accessible additions to Fillmore County Park will increase the opportunity for people with disabilities' involvement at the park.

After reviewing the site concept map together, we determined several details that can enhance the accessibility and universal design of this Phase I park plan including the following:

Parking Lot

- The 2 south-western most parking spaces in the proposed parking lot should be van accessible with 8' wide parking lanes and an 8' aisle between the spaces. 'Accessible Parking' signs should clearly mark these spaces, in particular the van accessible space should be signed as such to the left of the access aisle.
- Parking bumpers should be placed in front of all the spaces, between the parking space and the adjacent accessible trail so that vehicles do not encroach on the pathway.

Accessible Pathway and Earthen 5K Trail

- The crushed aggregate that will comprise the .5 mile accessible path around the sports field will need to be feathered into a sloped portion of the accessible concrete pad that the restroom will be sited upon so that these two surfaces create a seamless transition.
- The grade of the aggregate surfaced trail should be raised slightly from the grade of the surrounding ground to promote positive drainage away from the path, but at the least slope and cross slope possible.





Dedicated to the success of children, youth, adults and seniors with disabilities at home, at school, at work and in the community since 1976.

page 2

- The Parks & Open Space Committee should consider extending the accessible restroom pathway to a viewing area next to the sports field.
- The placement of benches along the accessible pathway should be considered in future phases of development. Wherever a bench is sited, it should be adjacent to a 5'x5' area for wheelchair use and viewing that does not interfere with use of the pathway.
- For greater accessibility for all persons, the earthen 5K trail that is planned for Phase I development should be free of all obstructions including roots and other natural hazards, to eliminate trip hazards.
- The 5K trail should provide an additional shortcut connector trail that will shorten the distance for users so that they can more readily return to parking or the restroom.
- Signage with raised lettering and large typefaces should designate the distance traveled on the 5K trail and the distance back to the start of the trail.

Other

- If picnic tables are planned for future phases of development, they should be of a design that accommodates a wheelchair at the table surface and benches and tabletops that do not contain sharp corners.
- Any future picnic grills should be surrounded by an accessible surface that allows a wheelchair user to change their position in relation to the grill, in order to move out of cooking smoke.

This is a brief overview to support the request of the Livingston County Parks & Open Space Advisory Committee and the MDNR. Much of this park can be made accessible when working with the environment creatively. We believe this proposed plan of development will allow this park to be developed and create new opportunities for community engagement. We encourage MDNR to partner with Livingston County to make the improvements to this property that they are proposing. If you have any questions please contact me at Carolyn@aacil.org or 734-971-0277 ext 16.

Thank you for your inclusion and consideration.

Respectfully submitted,

A handwritten signature in black ink that reads 'Carolyn L. Grawi'.

Carolyn L. Grawi, MSW, LMSW, ACSW, ADAC
Macro and Clinical Practice
Vice President, Chief Programs Officer



3941 Research Park Drive • Ann Arbor, MI 48108 • (734)971-0277 • www.annarborcil.org

Recreational Classification System

A Recommended Classification System For Local And Regional Recreation Open Space And Trails				
Classification	General Description	Location Criteria	Size Criteria	Acres/1,000 Population
Mini-Park	Used to address limited, isolated or unique recreational needs.	Less than ¼ mile distance in residential setting	Between 2500 sq. ft. and one acre in size.	0.25 to 0.5
Neighborhood Park	Neighborhood park remains the basic unit of the park system and serves as the recreational and social focus of the neighborhood. Focus is on informal active and passive recreation.	¼ to ½ mile distance and uninterrupted by non-residential roads and other physical barriers.	5 acres is considered minimum size. 5 to 10 acres is optimal.	1.0 to 2.0
School -Park	Depending on circumstances, combining parks with school sites can fulfill the space requirements for other classes of parks, such as neighborhood, community, sports complex and special use.	Determined by location of school district property.	Variable-depends on function.	Variable
Community Park	Serves broader purpose than neighborhood park. Focus is on meeting community-based recreation needs, as well as preserving unique landscapes and open spaces.	Determined by the quality and suitability of the site. Usually serves two or more neighborhoods and ½ to 3 mile distance.	As needed to accommodate desired uses. Usually between 30 and 50 acres.	5.0 to 8.0
Large Urban Park (Lutz County Park And Fillmore County Park)	Large urban parks serve a broader purpose than community parks and are used when community and neighborhood parks are not adequate to serve the needs of the community. Focus is on meeting community-based recreational needs, as well as preserving unique landscapes and open spaces.	Determined by the quality and suitability of the site. Usually serves the entire community.	As needed to accommodate desired uses. Usually a minimum of 50 acres, with 75 or more acres being optimal.	Variable
Natural Resource Areas	Lands set aside for preservation of significant natural resources, remnant landscapes, open space, and visual aesthetics/ buffering.	Resource availability and opportunity.	Variable.	Variable
Regional / Metropolitan Park	Land set aside for preservation of significant natural resources, remnant landscapes, open space, and visual aesthetics/buffering.	Located to serve several communities within 1 hour driving time	Optimal size is 200+ acres, but size varies based on accommodating the desired uses.	5.0 to 10.0

Adapted From:

Lancaster, R. A., Ed. Recreation, Park and Open Space Standards and Guidelines. Alexandria, VA: National Recreation and Park Association, 1983.

Mertes, J. S. and J. R. Hall. Park, Recreation, Open Space and Greenway Guidelines. Alexandria, VA: National Recreation and Park Association, 1995

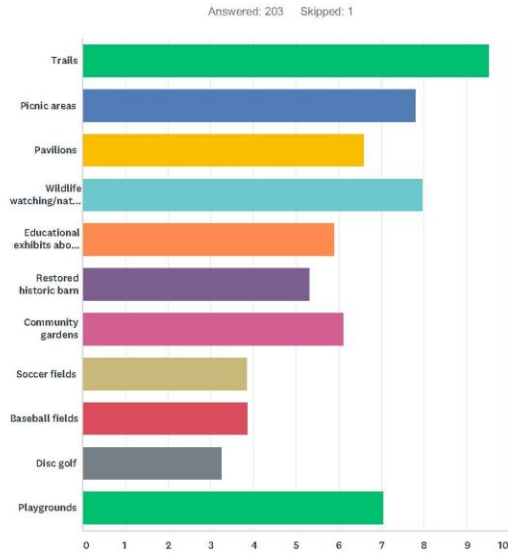
2019 – 2023 LIVINGSTON COUNTY PARKS & OPEN SPACE PLAN

Survey Question #7

Livingston County Parks & Recreation Opinion Survey, August 3 - September 7

SurveyMonkey

Q7 Prioritize your preference for outdoor activities listed in question #6, with 1 = most preferred and 11 = least preferred.



	1	2	3	4	5	6	7	8	9	10	11	TOTAL
Trails	56.22% 104	15.68% 29	8.65% 16	6.49% 12	1.62% 3	1.62% 3	2.16% 4	1.08% 2	1.08% 2	1.62% 3	3.78% 7	185
Picnic areas	4.00% 7	23.43% 41	19.43% 34	16.00% 28	8.57% 15	14.29% 25	5.14% 9	4.00% 7	2.29% 4	1.71% 3	1.14% 2	175
Pavilions	1.10% 2	6.08% 11	18.78% 34	16.57% 30	11.60% 21	13.81% 25	11.05% 20	11.60% 21	3.31% 6	2.21% 4	3.87% 7	181
Wildlife watching/nature interpretation	9.84% 18	19.67% 36	13.66% 25	23.50% 43	14.21% 26	3.83% 7	5.48% 10	3.83% 7	4.37% 8	1.09% 2	0.55% 1	183
Educational exhibits about agriculture	1.12% 2	3.93% 7	14.04% 25	7.87% 14	17.42% 31	13.48% 24	13.48% 24	9.55% 17	8.43% 15	5.62% 10	5.06% 9	178
Restored historic barn	2.20% 4	4.95% 9	6.59% 12	8.24% 15	9.89% 18	15.93% 29	15.93% 29	10.99% 20	6.04% 11	6.59% 12	12.64% 23	182
Community gardens	4.95% 9	8.79% 16	6.59% 12	8.24% 15	13.19% 24	14.29% 26	18.68% 34	9.89% 18	6.04% 11	3.85% 7	5.49% 10	182
Soccer fields	1.16% 2	3.49% 6	1.16% 2	4.65% 8	3.49% 6	4.07% 7	11.05% 19	18.60% 32	20.35% 35	18.60% 32	13.37% 23	172
Baseball fields	1.12% 2	2.79% 5	3.91% 7	2.23% 4	7.82% 14	6.70% 12	3.91% 7	10.06% 18	25.14% 45	27.37% 49	8.94% 16	179

Livingston County Parks & Recreation Opinion Survey, August 3 - September 7

SurveyMonkey

Disc golf	2.78% 5	1.67% 3	2.78% 5	2.22% 4	3.33% 6	4.44% 8	3.89% 7	12.22% 22	15.00% 27	21.11% 38	30.56% 55	180
Playgrounds	23.56% 45	14.66% 28	8.90% 17	5.76% 11	6.28% 12	6.81% 13	5.76% 11	4.71% 9	5.76% 11	6.28% 12	11.52% 22	191

Public Comment Posting – Posted at the Livingston County Administration Building and the Livingston County Courthouse.



LIVINGSTON COUNTY PLANNING DEPARTMENT

LIVINGSTON COUNTY, MICHIGAN
304 E. Grand River Avenue - Suite 206 - Howell MI 48843

Kathleen Kline-Hudson
Planning Director

TEL: (517) 546-7555
E-MAIL: kathleenk@co.livingston.mi.us

FEBRUARY 11, 2019

**STATE OF MICHIGAN
COUNTY OF LIVINGSTON**

NOTICE IS HEREBY GIVEN that a draft copy of the
Livingston County Parks & Open Space Plan 2019 – 2023
is available for a 30 day public review and comment period between
February 11, 2019 and March 12, 2019

A DRAFT COPY OF THE PLAN IS AVAILABLE FOR REVIEW AT:

Livingston County Planning Department
304 East Grand River Avenue, Suite 206
Howell, MI 48843

Or on the following Livingston County website pages:

<https://www.livqov.com/plan/Pages/default.aspx>

<https://www.livqov.com/parks/Pages/default.aspx>

PLEASE SUBMIT COMMENTS IN WRITING, BY PHONE OR E-MAIL TO:

Livingston County Planning Department
304 East Grand River Avenue, Suite 206
Howell, MI 48843
(517) 546-7555
planning@livgov.com

Public Comment Press Release – Circulated on February 11, 2019 to over 400 persons on the Livingston County Planning Department e-mail list including representatives from all 20 local units of government in Livingston County, radio and press media.



LIVINGSTON COUNTY PLANNING DEPARTMENT

LIVINGSTON COUNTY, MICHIGAN
304 E. Grand River Avenue - Suite 206 - Howell MI 48843

Kathleen Kline-Hudson
Planning Director

TEL: (517) 546-7555
E-MAIL: kathleenk@co.livingston.mi.us

FOR IMMEDIATE RELEASE:

*The Livingston County Parks & Open Space Plan 2019-2023,
is now available for review and public comment between
February 11 – March 12, 2019*

The Livingston County Parks and Open Space Advisory Committee in partnership with the Livingston Planning Department has drafted an update to Livingston County's current 5 yr. parks and open space plan.

The purpose of this plan is to guide the parks, open space and recreation decision-making of Livingston County government over the next five years. This plan follows the format required by the Michigan Department of Natural Resources.

Beginning Monday, February 11, 2019, the draft copy of the Livingston County Parks & Open Space Plan 2019-2023, will be available on the Livingston County website for a 30 day review and comment period. A hard copy of the plan is also available for review at the front desk of the Livingston County Planning Department, 304 E. Grand River Ave., Howell, MI, Suite 206.

If you wish to view the plan on-line, please utilize one of the following web addresses:

<https://www.livgov.com/plan/Pages/default.aspx>

<https://www.livgov.com/parks/Pages/default.aspx>

Please submit comments in writing, by phone or e-mail to:

Livingston County Planning Department
304 East Grand River Avenue, Suite 206
Howell, MI 48843
Phone: (517) 546-7555
E-mail: planning@livgov.com

The 30 day review and comment period will be followed by a public hearing regarding the plan in the Livingston County Board of Commissioners Chambers at the regular March 20, 2019 meeting of the Livingston County Planning Commission, held at 6:30 p.m. This public hearing will be further noticed in March, 2019.

Thank you in advance for helping us circulate information about this.

Summary of Public Comments Received

Placeholder for Summary of Comments

Public Hearing Advertisement – Livingston County Planning Commission – The public hearing held during the regular March 20, 2019 meeting of the Livingston County Planning Commission was advertised in the Livingston County Press & Argus on March X, 2019. The public hearing was also advertised by local radio station WHMI.

Placeholder for Advertisement

Public Hearing Minutes

Placeholder for Public Hearing Minutes

Resolution of Support– Livingston County Parks and Open Space Advisory Committee – The Resolution of Support was passed unanimously by the Livingston County Parks and Open Space Advisory Committee at their March X, 2019 meeting. This is the resolution that is referred to in the Resolution of Adoption that was passed by the Livingston County Board of Commissioners on March XX, 2019

Placeholder for Resolution of Support

Public Meeting Posting For Resolution of Plan Adoption – Livingston County Board of Commissioners – The public was provided a final opportunity for public comment prior to the regular March 25, 2019 meeting of the Livingston County Board of Commissioners at which adoption of the plan was considered. This meeting was posted on...

Placeholder for Public Meeting Posting

Livingston County Board of Commissioners Meeting Minutes

Placeholder for BOC Meeting Minutes

Livingston County Board of Commissioners Resolution of Adoption

Placeholder for BOC Resolution of
Adoption

MDNR Community Park, Recreation, Open Space and Greenway Plan Checklist – Page #1



Michigan Department of Natural Resources-Grants Management

COMMUNITY PARK, RECREATION, OPEN SPACE, AND GREENWAY PLAN CERTIFICATION CHECKLIST

By Authority of Parts 19, 703 and 716 of Act 451, P.A. 1994, as amended, submission of this information is required for eligibility to apply for grants

INSTRUCTIONS: Complete, obtain certification signatures and submit this checklist with a locally adopted recreation plan.

All recreation plans are required to meet the content and local approval standards listed in this checklist and as outlined in the *Guidelines for the Development of Community Park, Recreation, Open Space and Greenway Plans* provided by the Michigan Department of Natural Resources (DNR). Plans must be submitted to the DNR **with** a completed checklist that has been signed by an authorized official(s) of the local unit of government(s) submitting the plan. Plans may be submitted at any time of the year, but no later than February 1 of the year the local unit of government is applying for grants.

PLAN INFORMATION		
Name of Plan: Livingston County Parks & Open Space Plan 2019 - 2023		
List the community names (including school districts) that are covered under the plan and have passed a resolution adopting the plan	County	Month and year plan adopted by the community's governing body
Livingston County Government	Livingston	March 2019

PLAN CONTENT
<p>INSTRUCTIONS: Please check <u>each</u> box to certify that the listed information is included in the <u>final</u> plan.</p> <p><input type="checkbox"/> 1. COMMUNITY DESCRIPTION</p> <p><input type="checkbox"/> 2. ADMINISTRATIVE STRUCTURE</p> <ul style="list-style-type: none"> <input type="checkbox"/> Roles of Commission(s) or Advisory Board(s) <input type="checkbox"/> Department, Authority and/or Staff Description and Organizational Chart <input type="checkbox"/> Annual and Projected Budgets for Operations, Maintenance, Capital Improvements and Recreation Programming <input type="checkbox"/> Current Funding Sources <input type="checkbox"/> Role of Volunteers <input type="checkbox"/> Relationship(s) with School Districts, Other Public Agencies or Private Organizations Regional Authorities or Trailway Commissions Only: <ul style="list-style-type: none"> <input type="checkbox"/> Description of the Relationship between the Authority or Commission and the Recreation Departments of Participating Communities <input type="checkbox"/> Articles of Incorporation <p><input type="checkbox"/> 3. RECREATION INVENTORY</p> <ul style="list-style-type: none"> <input type="checkbox"/> Description of Methods Used to Conduct the Inventory <input type="checkbox"/> Inventory of all Community Owned Parks and Recreation Facilities <input type="checkbox"/> Location Maps (site development plans recommended but not required) <input type="checkbox"/> Accessibility Assessment <input type="checkbox"/> Status Report for all Grant-Assisted Parks and Recreation Facilities <input type="checkbox"/> Waterways Inventory (if applicable) <p><input type="checkbox"/> 4. RESOURCE INVENTORY (OPTIONAL)</p> <p><input type="checkbox"/> 5. DESCRIPTION OF THE PLANNING PROCESS</p>

MDNR Community Park, Recreation, Open Space and Greenway Plan Checklist – Page #2

<input checked="" type="checkbox"/> 6. DESCRIPTION OF THE PUBLIC INPUT PROCESS	
<input checked="" type="checkbox"/>	Description of the Method(s) Used to Solicit Public Input Before or During Preparation of the Plan, Including a Copy of the Survey or Meeting Agenda and a Summary of the Responses Received
<input checked="" type="checkbox"/>	Copy of the Notice of the Availability of the Draft Plan for Public Review and Comment
	Date of the Notice <u>February 11, 2019</u>
	Type of Notice <u>Posting and Press Release</u>
	Plan Location <u>Livingston County Planning Dept.</u>
	Duration of Draft Plan Public Review Period (Must be at Least 30 Days) <u>February 11- March 12, 2019</u>
<input type="checkbox"/>	Copy of the Notice for the Public Meeting Held after the One Month Public Review Period and Before the Plan's Adoption by the Governing Body(ies)
	Date of Notice _____
	Name of Newspaper _____
	Date of Meeting _____
<input type="checkbox"/>	Copy of the Minutes from the Public Meeting
<input checked="" type="checkbox"/> 7. GOALS AND OBJECTIVES	
<input checked="" type="checkbox"/> 8. ACTION PROGRAM	
<input checked="" type="checkbox"/> 9. POST-COMPLETION SELF-CERTIFICATION REPORT(S)	
PLAN ADOPTION DOCUMENTATION	
APPROVAL DOCUMENTATION: For multi-jurisdictional plans, each local unit of government must pass a resolution adopting the plan. Prepare and attach a separate page for each unit of government included in the plan.	
<input type="checkbox"/>	1. Official resolution of adoption by the governing body <u>dated:</u> _____
<input type="checkbox"/>	2. Official resolution of the _____ Commission or Board, recommending adoption of the plan by the governing body, <u>dated:</u> _____
<input type="checkbox"/>	3. Copy of letter transmitting adopted plan to County Planning Agency <u>dated:</u> _____
<input type="checkbox"/>	4. Copy of letter transmitting adopted plan to Regional Planning Agency <u>dated:</u> _____
OVERALL CERTIFICATION	
NOTE: For multi-jurisdictional plans, Overall Certification must include the signature of each local unit of government. Prepare and attach a separate signature page for each unit of government included in the plan.	
<i>I hereby certify that the recreation plan for _____ includes the required content, as indicated above and as set forth by the DNR.</i>	
Authorized Official for the Local Unit of Government _____ Date _____	

This completed checklist must be uploaded in MiRecGrants.

DRAFT

MDNR Post Completion Self-Inspection Report

**Placeholder for MDNR Post Completion
Report**

Letters of Transmittal Regarding Adoption of the Plan

Placeholder for Letters of Transmittal