



Livingston County COVID-19 Report

Date of report: **1/8/21**

Date range used in report: **12/25/20 – 1/7/21**

This report provides a summary of COVID-19 trends and activities for Livingston County over the last two weeks; when appropriate, the previous two weeks are used as a comparison.

Contents

SUMMARY..... 2

SNAPSHOT 3

 Case Count..... 3

 Hospitalizations 3

 Deaths..... 3

 Positivity Rate..... 3

 Demographics 5

NOTABLE EVENTS AND PRESS RELEASES 5

 Events 5

 Press Releases 5



SUMMARY

Livingston County residents worked diligently over the holiday season to limit the transmission of COVID-19 and follow the principles of the Pause to Save Lives extension. While this recent week has seen an uptrend in the COVID-19 positivity rate and daily cases per million, the Livingston County Health Department recognizes the efforts of residents and encourages them to continue their vigilance to protect our most vulnerable residents at a time when they are most at risk. Over the holiday season and New Year, COVID-19 once again posed a threat to long-term care residents in Livingston County. LCHD is actively working with long-term care facilities to offer support and infection prevention resources.

On December 23, 2020, the Livingston County Health Department (LCHD) received the first shipment of Moderna COVID-19 vaccines. LCHD immediately began vaccinating priority groups identified by the Michigan Department of Health and Human Services (MDHHS). Initial clinics included vaccination of EMS, fire medical responders, frontline healthcare providers, and long-term care facility staff and residents. At this time, the initial supplies of the initial supplies of COVID-19 vaccine are limited. LCHD expects vaccine administration to roll out over a series of months and strongly encourages residents of Livingston County to check the LCHD website regularly for updates. Even with the vaccine in play, slowing the transmission of COVID-19 in Livingston County will still require community teamwork. LCHD reminds residents to continue to practice hand hygiene, mask wearing, and social distancing.



SNAPSHOT

Case Count

Over the past two weeks, there were 837 total cases (average of 59 cases per day). This is 5% increase when compared to the previous two weeks in Livingston County.

	12/11-12/24	12/25-1/7
Total Cases	794	837
Confirmed	716	716
Probable	48	121

There are two classifications of cases that make up the total number of COVID-19 cases; confirmed cases and probable cases. The case count above includes both.

- Confirmed cases are people who had a nasopharyngeal COVID-19 PCR test that was positive.
- Probable cases are people who have COVID-19 symptoms and are close contacts of someone who has COVID-19, but did not have a PCR test done. If someone has a positive rapid COVID-19 antigen test (as well as COVID-19 symptoms and/or are a close contact of a COVID-19 case), they are still a probable case, because they did not have a COVID-19 PCR test done. The COVID-19 PCR test is the most sensitive COVID-19 test and is most likely to correctly diagnose an active COVID-19 infection.

Hospitalizations

Over the past two weeks, there were 14 new hospitalizations. The previous two-week period had 14 cases with a new hospital admission.

	12/11-12/24	12/25-1/7
New Admissions	14	14

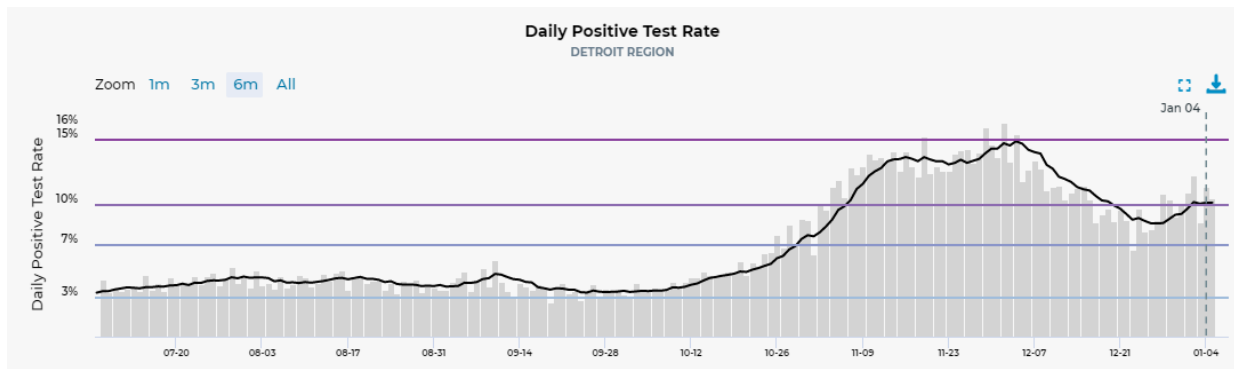
Deaths

Over the past two weeks, there were 6 deaths in Livingston County. This is the same number of deaths as the previous two-week period (6 deaths). Overall, death rates have been increasing since mid-October.

Positivity Rate

The current test positivity rate in Livingston County is 11.9%, which has started to increase in the New Year. The local rate in Livingston County is higher than the State of Michigan (9.7%).





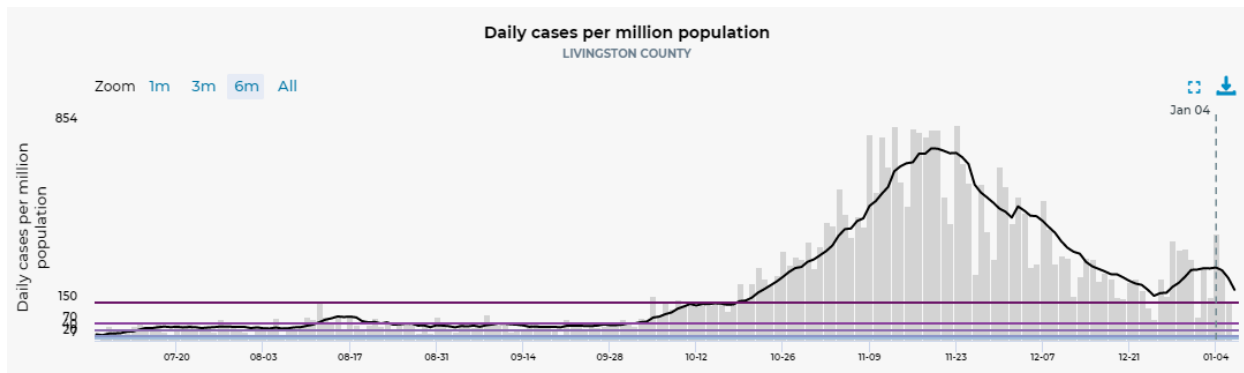
The positivity rate shows what percentage of all COVID-19 tests that were done have come back positive over a certain period of time. The positivity rate depends on the number of COVID-19 cases in a community and the total number of tests that were done. The rate can be high if there are more COVID-19 cases and there is increased spread of COVID-19 in the community; it can also be increased if there are not enough tests being done in the community. A goal that has been adopted across health departments is for the positivity rate to be less than or equal to 3%.

$$\text{Positivity Rate} = \frac{\text{Positive COVID-19 Tests}}{\text{Total COVID-19 Tests}} \times 100\%$$

Epi Curve

There are currently 290 cases per million. This reflects a slight uptrend since the decrease in cases seen in mid-December. This is most likely due to gatherings during the winter holidays.

Despite this slowed growth in cases per million, Livingston County remains in the highest risk category, “E”, as is the rest of Michigan.

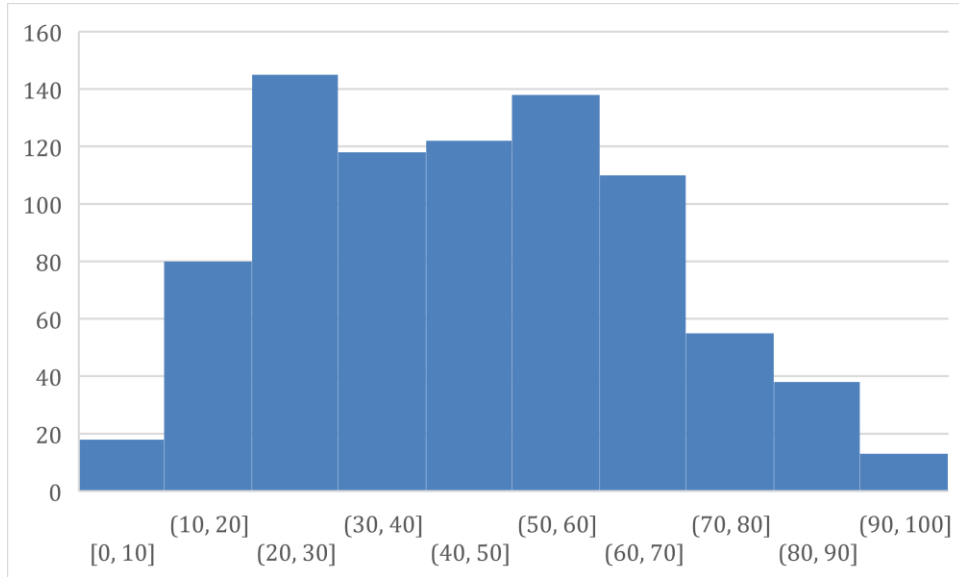


An epi curve is a way to visually show the onset of cases in a community during an outbreak. It shows us how many COVID-19 cases had the onset of symptoms on each day over a period of time. It is a way to illustrate the spread of COVID-19 in the community and how the number of cases has been trending.

Demographics

Age

The ages of individuals with confirmed or probable COVID-19 shows a bimodal distribution, with peaks from 20-30 years and 50-60 years. The average age is 46 years.



NOTABLE EVENTS AND PRESS RELEASES

Events

- COVID-19 Vaccine Clinics have officially started in Livingston County!
- New and Ongoing Outbreaks in multiple Residential Care Facilities (Skilled Nursing, Assisted Living, Adult Foster Care, and Homes for the Aged)

Press Releases

- Livingston County Update on COVID-19 Vaccine and Distribution | December 23, 2020
- Livingston County Health Department Continues to Vaccinate Phase 1A and Prepares for Phase 1B | January 7, 2021

