



Livingston County COVID-19 Report

Date of report: **1/23/21**

Date range used in report: **1/8/20 – 1/21/21**

This report provides a summary of COVID-19 trends and activities for Livingston County over the last two weeks; when appropriate, the previous two weeks are used as a comparison.

Contents

SUMMARY.....	2
SNAPSHOT	3
Case Count.....	3
Hospitalizations	3
Deaths.....	3
Positivity Rate.....	3
Demographics	5
NOTABLE EVENTS AND PRESS RELEASES	5
Events	5
Press Releases	5



SUMMARY

The Livingston County Health Department (LCHD) has been working closely with the Michigan Department of Health and Human Services (MDHHS) to administer COVID-19 vaccines. LCHD is following MDHHS guidelines to administer vaccines to eligible Livingston County residents, as well as develop partnerships with local partners to increase vaccination efforts in Livingston County (see MDHHS guidance <https://bit.ly/3rjXvKU>). Individuals interested in receiving the COVID-19 vaccine can fill out the Vaccination Interest Form (<https://bit.ly/3nvJZk6>) or call 2-1-1 for assistance with filling out the form. LCHD is committed to administering our vaccine supply as quickly and safely as possible to reach all Livingston County residents. For more information about COVID-19 vaccine supply at LCHD, please see the most recent press release visit the LCHD COVID-19 vaccination page (<https://bit.ly/39ab48w>).

At this time, however, COVID-19 vaccine supply is extremely limited at the local level. LCHD expects vaccine administration to roll out over a series of months and strongly encourages residents of Livingston County to check the LCHD website regularly for updates. Even with the vaccine in play, slowing the transmission of COVID-19 in Livingston County will still require community teamwork. LCHD reminds residents to continue to practice hand hygiene, mask wearing, and social distancing. This teamwork is especially important as we see a downtrend in number of cases, as well as percent positivity rate. Livingston County residents must not lose their vigilance to continue this downward trend to keep our most vulnerable populations safe from COVID-19.



SNAPSHOT

Case Count

Over the past two weeks, there were 767 total cases (average of 54 cases per day). This is 8% decrease when compared to the previous two weeks in Livingston County

	12/25-1/7	1/8-1/21
Total Cases	837	767
Confirmed	716	674
Probable	121	93

There are two classifications of cases that make up the total number of COVID-19 cases; confirmed cases and probable cases. The case count above includes both.

- Confirmed cases are people who had a nasopharyngeal COVID-19 PCR test that was positive.
- Probable cases are people who have COVID-19 symptoms and are close contacts of someone who has COVID-19, but did not have a PCR test done. If someone has a positive rapid COVID-19 antigen test (as well as COVID-19 symptoms and/or are a close contact of a COVID-19 case), they are still a probable case, because they did not have a COVID-19 PCR test done. The COVID-19 PCR test is the most sensitive COVID-19 test and is most likely to correctly diagnose an active COVID-19 infection.

Hospitalizations

Over the past two weeks, there were 6 new hospitalizations. The previous two-week period had 14 cases with a new hospital admission.

	12/25-1/7	1/8-1/21
New Admissions	14	6

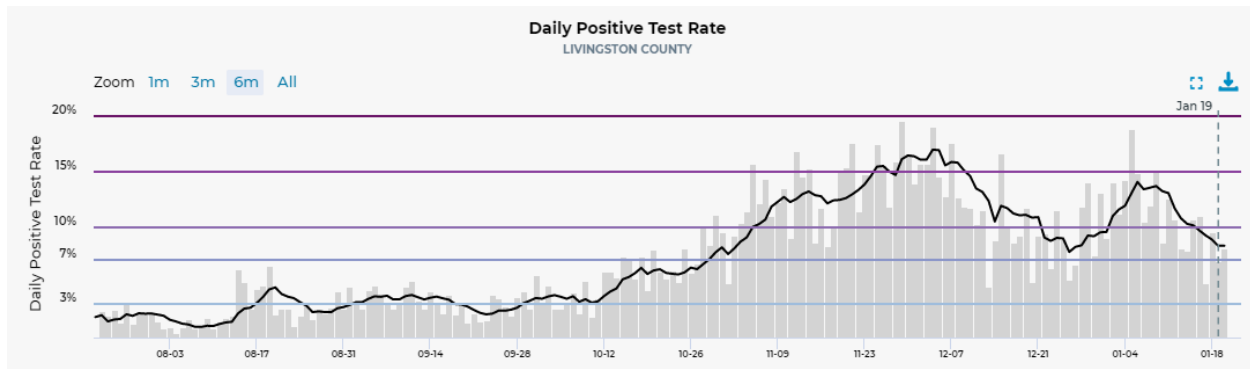
Deaths

Over the past two weeks, there were 5 deaths in Livingston County. This is similar to the number of deaths as the previous two-week period (6 deaths). Overall, death rates have been increasing since mid-October. To date, there have been 101 confirmed and probable deaths in Livingston County.

Positivity Rate

The current test positivity rate in Livingston County is 8.2%, which has substantially decreased since the previous two-week period (11.9%). The local rate in Livingston County is higher than the State of Michigan (6.6%).





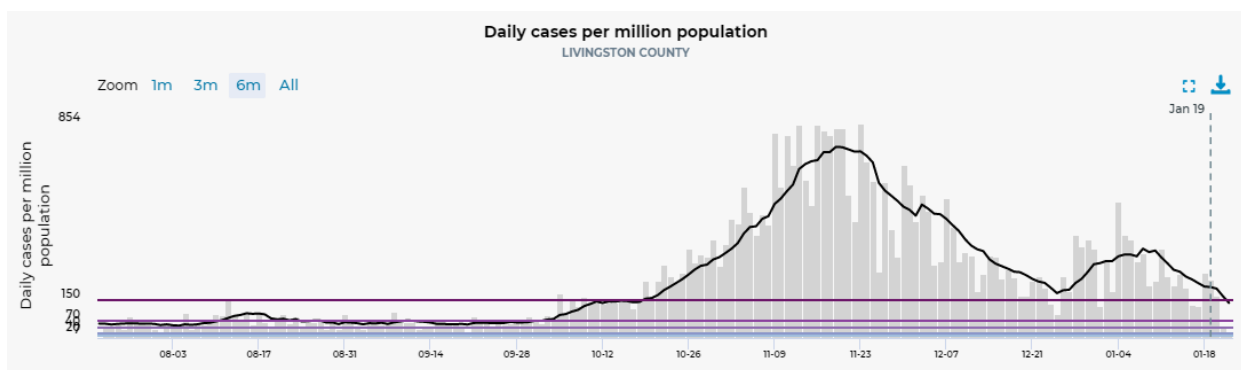
The positivity rate shows what percentage of all COVID-19 tests that were done have come back positive over a certain period of time. The positivity rate depends on the number of COVID-19 cases in a community and the total number of tests that were done. The rate can be high if there are more COVID-19 cases and there is increased spread of COVID-19 in the community; it can also be increased if there are not enough tests being done in the community. A goal that has been adopted across health departments is for the positivity rate to be less than or equal to 3%.

$$\text{Positivity Rate} = \frac{\text{Positive COVID-19 Tests}}{\text{Total COVID-19 Tests}} \times 100\%$$

Epi Curve

There are currently 203 cases per million. This reflects a slight downtrend since the increase in cases seen in the past two-week period that resulted from New Year’s gatherings.

Despite this slowed growth in cases per million, Livingston County remains in the highest risk category, “E”, as is the rest of Michigan.



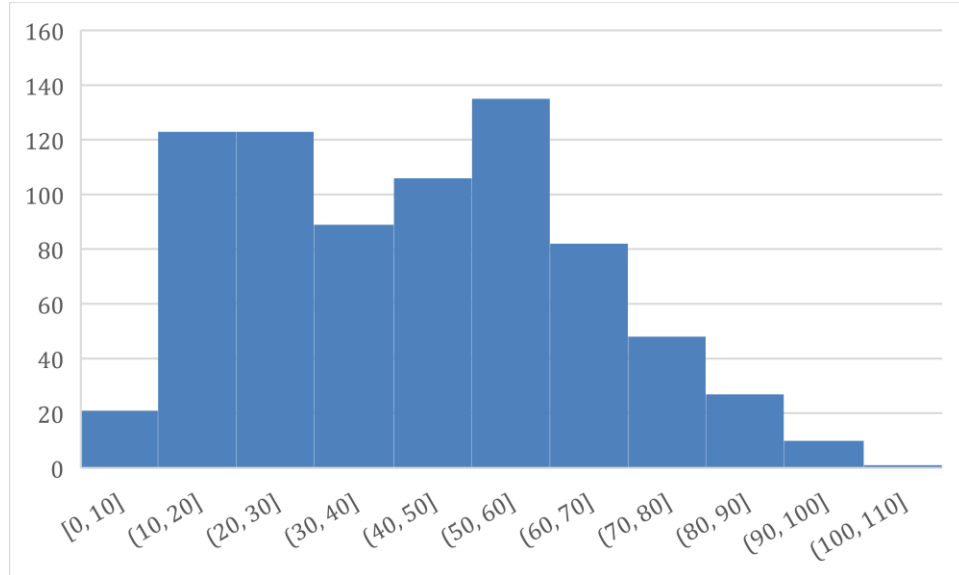
An epi curve is a way to visually show the onset of cases in a community during an outbreak. It shows us how many COVID-19 cases had the onset of symptoms on each day over a period of time. It is a way to illustrate the spread of COVID-19 in the community and how the number of cases has been trending.



Demographics

Age

The ages of individuals with confirmed or probable COVID-19 shows a bimodal distribution, with peaks from 10-30 years and 50-60 years. The average age is 43 years.



NOTABLE EVENTS AND PRESS RELEASES

Events

- COVID-19 Vaccine Clinics with 65+ population and Livingston County K-12 educators
- New and Ongoing Outbreaks in multiple Residential Care Facilities (Skilled Nursing, Assisted Living, Adult Foster Care, and Homes for the Aged)

Press Releases

- COVID-19 Vaccination Update for Livingston County | January 21, 2021
- Free Mask Drive Through Event at Hamburg Senior Center on January 26 | January 19, 2021
- Livingston County Health Department Continues to Vaccinate Phase 1A and Prepares for Phase 1B | January 7, 2021

