



Livingston County COVID-19 Report

Date of report: 1/7/22

This report provides a summary of recent COVID-19 trends and activities for Livingston County; when appropriate, the previous months are used as a comparison.

Contents

Summary	2
Case Counts.....	2
Epi Curve	2
Demographics	3
Test Positivity Rates	4
Testing.....	4
Hospital Update	4
Deaths	5
Variants of Concern	5
Vaccinations	6
Coverage Metrics	6

Summary

In Livingston County, COVID-19 cases continue to rise, with 7-day test positivity rates reaching record highs. These upswings are likely due to increased indoor gatherings surrounding holiday celebrations, as well as the transmission of the Omicron variant throughout our community. Increased cases have put additional strain on our local hospital system, which is reporting operating at full capacity for the third consecutive month. Due to the high level of COVID-19 transmission and strain on local healthcare systems, Livingston County Health Department (LCHD) recommends residents take extra precaution as we enter into 2022.

Since the last report, the Centers for Disease Control and Prevention (CDC) has also updated its isolation and quarantine guidance for the general public. The new guidance will result in shortened isolation and quarantine periods for many individuals. The updated guidance can be viewed in its entirety on the CDC's webpage: <https://bit.ly/3t8lboU>.

Case Counts

Over the month of December 2021, there were 4934 total cases (average of 160 cases per day). This is a 7% decrease when compared to the November 2021 cases in Livingston County. However, case counts have sharply increased since December 27, 2021 through the beginning of January 2022.

	Aug. 2021	Sept. 2021	Oct. 2021	Nov. 2021	Dec. 2021
Total Cases	1360	2031	3157	5308	4934
Confirmed	1120	1610	2505	4207	4052
Probable	240	421	652	1101	882

There are two classifications of cases that make up the total number of COVID-19 cases; confirmed cases and probable cases. The case count above includes both.

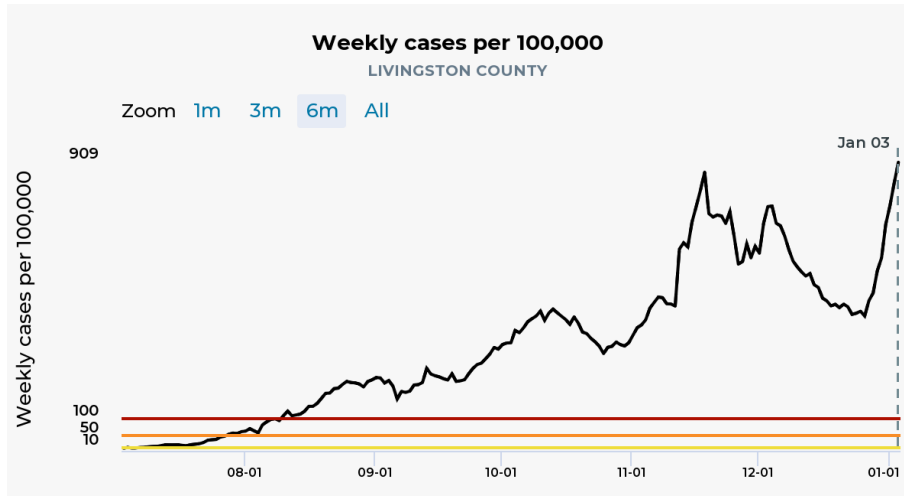
- *Confirmed cases are people who had a nasopharyngeal or saliva COVID-19 PCR test that was positive.*
- *Probable cases are people who have COVID-19 symptoms and are close contacts of someone who has COVID-19, but did not have a PCR test done. If someone has a positive rapid COVID-19 antigen test (as well as COVID-19 symptoms and/or are a close contact of a COVID-19 case), they are reported as a probable case, because they did not have a COVID-19 PCR test done. The COVID-19 PCR test is the most sensitive COVID-19 test and is most likely to correctly diagnose an active COVID-19 infection.*

Epi Curve

In Livingston County, there are currently 909 weekly cases per 100,000 as of January 3, 2022. This is nearly a 24% increase since November when there were 736 weekly cases per 100,000. Despite a slight decline observed at the beginning of December 2021, cases have risen significantly, likely due to an uptick in large holiday gatherings from mid-to-late December.



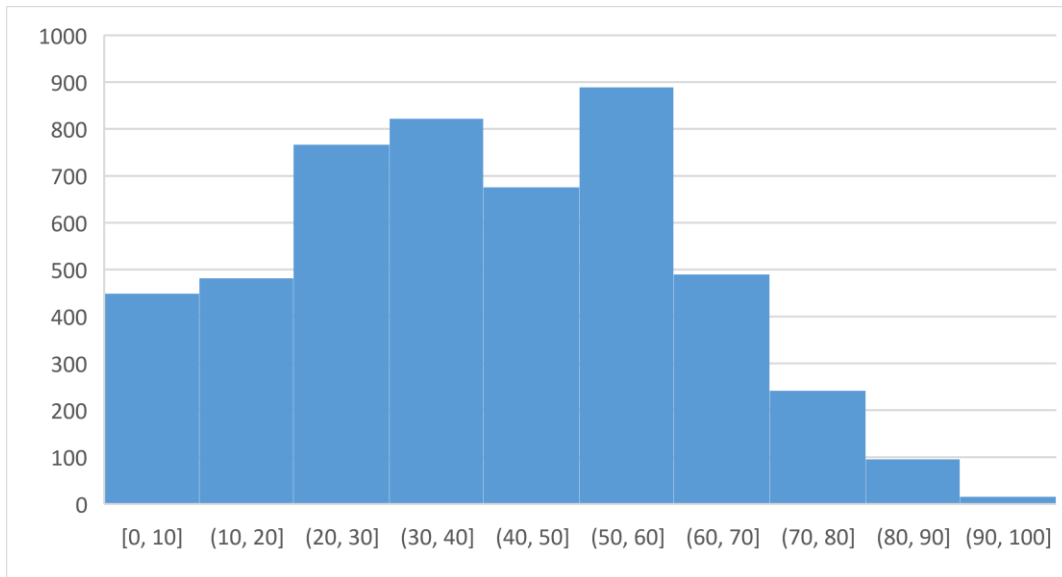
Livingston County cases per 100,000 remains in the High risk threshold category (≥ 100 weekly cases per 100,000) as defined by the CDC. This is similar to neighboring counties in the Detroit region.



An epi curve is a way to visually show the onset of cases in a community during an outbreak. It shows us how many COVID-19 cases had the onset of symptoms on each day over a period of time. It is a way to illustrate the spread of COVID-19 in the community and how the number of cases has been trending.

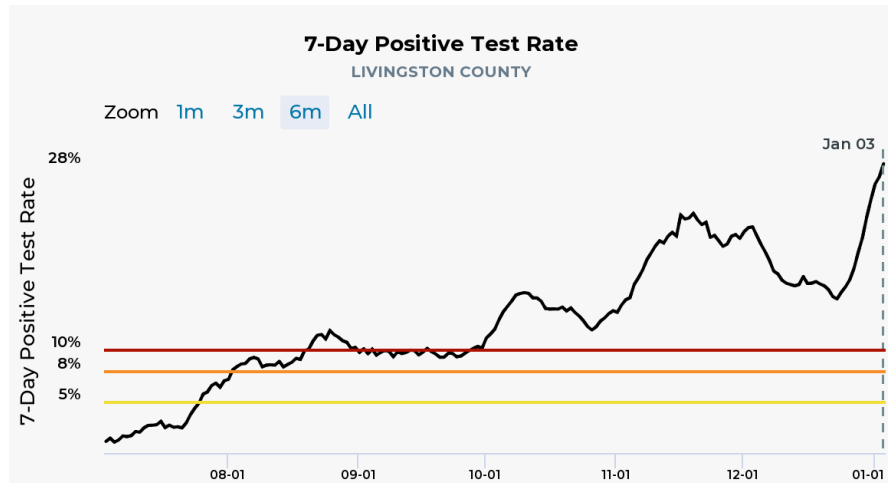
Demographics

The ages of individuals with confirmed or probable COVID-19 during December 2021 range from two days to 100 years. The average age is 40 years, though the majority of COVID-19 cases are under the age of 60 years.



Test Positivity Rates

According to CDC, the COVID-19 transmission level in Livingston County remains High as defined by a test positivity rate greater than or equal to 10%. This week, Livingston County's 7-day test positivity rate reached record highs. On January 3, 2022, Livingston County reported a 7-day test positivity rate of 28.2%. In comparison, 7-day test positivity rates on December 31 peaked around 24.7%. These local increases mirror test positivity increases seen across the State of Michigan.



$$\text{Positivity Rate} = \frac{\text{Positive COVID-19 Tests}}{\text{Total COVID-19 Tests}} \times 100\%$$

The positivity rate represents the percentage of all COVID-19 tests that have come back positive over a certain period of time. The positivity rate depends on the number of COVID-19 cases in a community and the total number of tests that were done. The rate can be high if there are more COVID-19 cases and there is increased spread of COVID-19 in the community; it can also be increased if there are not enough tests being done in the community. Health departments have adopted the goal of achieving a positivity rate to be less than or equal to 3%.

Testing

In addition to increased test positivity rates, demand for COVID-19 testing has grown substantially. To increase access to testing, LCHD has partnered with LynxDx of Ann Arbor to set up a drive-thru COVID testing site at the Legacy Sports Center Complex in Brighton. Appointment based testing began on January 5, 2022 and is planned to operate Monday-Sunday from 9:00am-5:00pm. Residents can register by going to <https://lynxdx.health/register>. Frequently asked questions about the testing process and type of test being offered can be found here <https://bit.ly/3sWMRNe>.

Hospital Update

Locally, St. Joseph Mercy Livingston Hospital has been operating at full capacity for the last three months. COVID-19 cases that required hospital admission dropped slightly in the second week of December as well as Emergency Department (ED) volumes throughout the holidays. However, ED



volumes have risen since January 2, 2022. For those coming in with COVID-19, the cases are predominantly Omicron, where symptoms are very mild in those vaccinated and more severe in those unvaccinated. Lastly, St. Joseph Mercy Livingston is reporting increased COVID-19 deaths in the last 45 days primarily due to the Delta variant.

Despite the slight decline in new COVID-19 hospital admissions reported at the beginning of December 2021, in the last few weeks these numbers have once again started to climb. Looking back at December 2021, there were 92 new COVID-19-associated hospitalizations. This is a 21% decrease compared to the previous month. The table below shows the number of new hospital admissions among cases referred to LCHD per month.

	Aug. 2021	Sept. 2021	Oct. 2021	Nov. 2021	Dec. 2021
New Admissions	42	43	30	117	92

Deaths

Since the last report, there have been 57 additional deaths in Livingston County. To date, there have been 352 COVID-19-related deaths in Livingston County. The table below shows the number of deaths in cases referred to LCHD per month.

	Aug. 2021	Sept. 2021	Oct. 2021	Nov. 2021	Dec. 2021	Jan.* 2022
COVID-19 Related Deaths	12	14	30	50	55	2

** At the time this report was developed.*

Variants of Concern

The first Omicron case in Livingston County was confirmed on December 27, 2021. Omicron spreads much more rapidly than other variants. Unvaccinated individuals are both at higher risk of being infected with Omicron and experiencing severe illness including hospitalizations and deaths. While vaccinated individuals are infected at higher rates than with previous variants, the disease is typically very mild among vaccinated individuals. Although Livingston County case counts and test positivity rates are extremely high right now, it is expected that these numbers will increase further before the Omicron surge improves. Using a layered approach to fight Omicron is best: ensure your COVID-19 vaccination status remains up to date, wear a high-quality mask (surgical or KN95/N95), and get tested if you have been exposed or develop symptoms.



Vaccinations

On January 5, 2022, CDC endorsed the Advisory Committee on Immunization Practices' (ACIP) recommendation to expand eligibility of booster doses to those 12 to 15 years old. Additionally, CDC recently updated its recommendation for when many people can receive a booster shot, shortening the interval from six months to five months for people who received the Pfizer-BioNTech or Moderna COVID-19 Vaccines.

LCHD continues to provide COVID-19 vaccinations to the public. Individuals interested in receiving a COVID-19 vaccine from LCHD can check our website for appointment availability: <https://bit.ly/3kGpliJ>. Individuals can also visit www.vaccines.gov to look for other nearby vaccination opportunities

Coverage Metrics

Vaccination rates in Livingston County continue to increase. At the time of this report, 65.5% of Livingston County residents have initiated their COVID-19 vaccination (i.e., received at least one dose of any COVID-19 vaccine). At the time of this report, 60.6% of residents are considered to be fully vaccinated with either one dose of Janssen or two does of either the Moderna or Pfizer vaccines.

Below shows the vaccination initiation metrics collected from the MDHHS COVID-19 Vaccine Dashboard as of December 31, 2021 (<https://bit.ly/39fQVxp>).

State of Michigan	Residents Vaccinated	Vaccination Coverage (% of Residents Vaccinated)
All Ages	5,928,297	62.9%
65+ years	1,540,955	87.3%
12-64 years	4,215,626	61.7%
5-11 years	171,194	20.7%

Livingston County	Residents Vaccinated	Vaccination Coverage (% of Residents Vaccinated)
All Ages	118,836	65.1%
65+ years	30,672	89.2%
12-64 years	84,292	63.4%
5-11 years	3,868	25.5%

