



## Livingston County COVID-19 Report

Date of report: 3/4/2022

This report provides a summary of recent COVID-19 trends and activities for Livingston County; when appropriate, the previous months are used as a comparison.

### Contents

Summary .....	2
Case Counts.....	2
Epi Curve .....	3
Demographics .....	3
Test Positivity Rates .....	3
Testing.....	4
Hospital Update .....	4
Deaths .....	5
Vaccinations .....	5
Coverage Metrics .....	5
Looking to the Future.....	6



## Summary

In Livingston County, February 2022 saw a decrease in COVID-19 cases. Both test positivity rates and cases per 100,000 declined throughout the month (6.2%, and 87 cases per 100,000 respectively as of February 28). This is attributed to the waned transmission of the Omicron variant. Additionally, community levels of transmission have dropped to low – a welcomed change after experiencing record-high transmission levels during the prior month. This decline in COVID-19 cases was also reflected at the state and national levels, prompting the Michigan Department of Health and Human Services (MDHHS) and the Centers for Disease Control and Prevention (CDC) to update their masking guidance.

On February 25, the CDC introduced a new tool to help communities decide what prevention steps to take based on COVID-19 community levels. Levels can be defined as low, medium, or high, and are determined by hospital bed counts, hospital admissions, and total number of new COVID-19 cases in an area. Currently, Livingston County community risk levels are classified as low (see [COVID-19 Community Levels](#)). With a low COVID-19 community level, the CDC recommends the following:

- Stay [up to date](#) with COVID-19 vaccines.
- [Get tested](#) if you have symptoms of COVID-19.

In addition to releasing this tool, CDC removed the requirement for masks to be worn on buses or vans operated by public or private school systems, including early care and child care programs. However, face coverings are still required on all other modes of public and private transportation (i.e. planes, trains, buses). See [Public Transportation Guidance](#) for more information.

## Case Counts

Throughout the month of February 2022, there were 1,426 total cases (average of 51 cases per day). This is an 85% decrease when compared to the January 2022 cases in Livingston County.

	Dec. 2021	Jan. 2022	Feb. 2022
Total Cases	4934	10090	1426
Confirmed	4052	8295	1126
Probable	882	1795	300

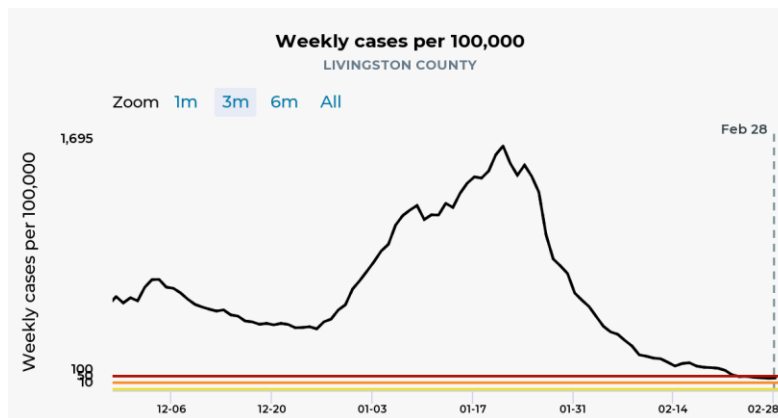
*There are two classifications of cases that make up the total number of COVID-19 cases; confirmed cases and probable cases. The case count above includes both.*

- *Confirmed cases are people who had a positive nasopharyngeal or saliva COVID-19 PCR test.*
- *Probable cases are people who have COVID-19 symptoms and are close contacts of someone who has COVID-19, but did not have a PCR test done. If someone has a positive rapid COVID-19 antigen test (as well as COVID-19 symptoms and/or are a close contact of a COVID-19 case), they are reported as a probable case, because they did not have a COVID-19 PCR test done. The COVID-19 PCR test is the most sensitive COVID-19 test and is most likely to correctly diagnose an active COVID-19 infection.*



## Epi Curve

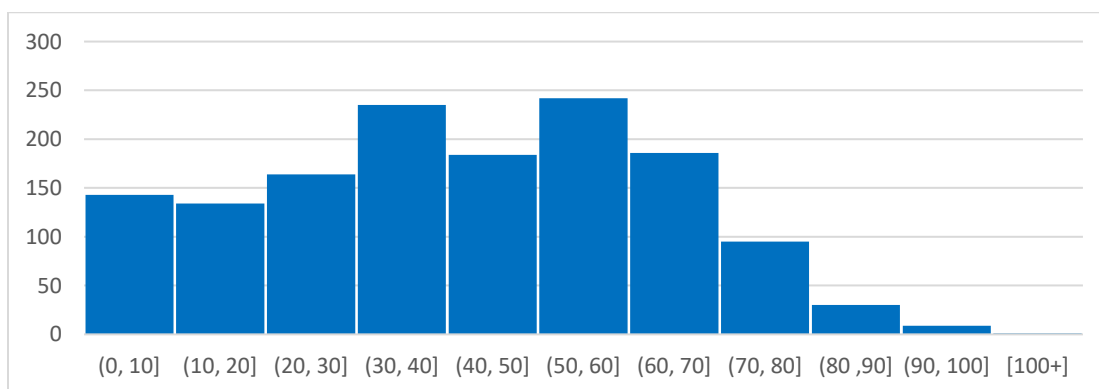
As seen elsewhere in the United States, case counts continue to drop as the Omicron variant wanes. As of February 28, there were 87 weekly cases per 100,000 in Livingston County. While this represents an 87% decrease since January (654.7 weekly cases per 100,000), case counts remain prevalent when compared to the test positivity and case counts of summer 2021. Livingston County cases per 100,000 remain in the substantial-risk threshold category (50-99 cases per 100,000) as defined by the CDC. This is similar to neighboring counties in the Detroit region.



*An epi curve is a way to visually show the onset of cases in a community during an outbreak. It shows us how many COVID-19 cases had the onset of symptoms on each day over a period of time. It is a way to illustrate the spread of COVID-19 in the community and how the number of cases has been trending.*

## Demographics

The ages of individuals with confirmed or probable COVID-19 during February 2022 range from one month to 100 years. The average age is 41 years, and the majority of COVID-19 cases are under the age of 60 years.

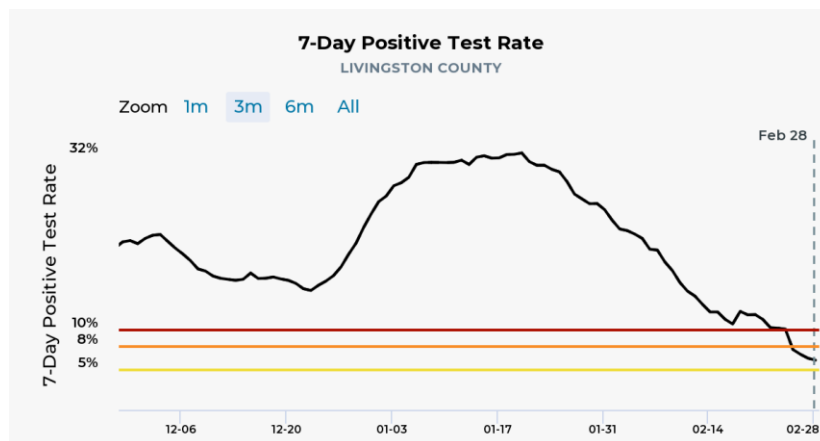


## Test Positivity Rates

According to CDC, the COVID-19 transmission level in Livingston County remains Moderate as defined by a test positivity rate greater than or equal to 5% and less than 8%. Within the past month, Livingston



County’s 7-day test positivity rate progressively dropped from the 30% high experienced in January. On February 28, 2022, Livingston County reported a 7-day test positivity rate of 6.2%. In comparison, 7-day test positivity rates in January peaked around 30%. These local decreases mirror test positivity decreases seen across Michigan.



$$\text{Positivity Rate} = \frac{\text{Positive COVID-19 Tests}}{\text{Total COVID-19 Tests}} \times 100\%$$

*The positivity rate represents the percentage of all COVID-19 tests that have come back positive over a certain period of time. The positivity rate depends on the number of COVID-19 cases in a community and the total number of tests that were done. The rate can be high if there are more COVID-19 cases and there is increased spread of COVID-19 in the community; it can also be increased if there are not enough tests being done in the community. Health departments have adopted the goal of achieving a positivity rate to be less than or equal to 3%.*

## Testing

As COVID-19 cases continue to decline, testing remains important. Testing is recommended for anyone who is experiencing symptoms of COVID-19, even if symptoms seem mild. Furthermore, testing is also recommended for those who have been exposed to someone with COVID-19 (testing is recommended 5 days after exposure). If you are immunocompromised or at high risk, have a plan in place to get tested for COVID-19 if needed (including home tests or access to rapid testing).

LCHD continues to work with LynxDx of Ann Arbor who operates the drive-thru COVID-19 testing site at the Legacy Sports Center Complex in Brighton. Residents can check clinic days/hours by visiting <https://www.lynxdx.com/testing-sites-list> and must register by visiting <https://lynxdx.health/register>. Frequently asked questions about the testing process can be found at <https://bit.ly/3sWMRNe>.

## Hospital Update

In recent days, St. Joseph Mercy Livingston Hospital has seen a decrease in admitted COVID-19 patients. While January faced an average of 14 COVID-19 admissions per day, this average decreased to 8 admissions per day in February. Additionally, non-COVID patient admissions have become more



prominent over the last month as COVID-19 test positivity and case counts decline. The table below shows the number of new hospital admissions among cases referred to LCHD per month.

	Dec. 2021	Jan. 2022	Feb. 2022
New Admissions	124	166	13

## Deaths

Since the last report, there were 19 additional deaths in Livingston County. To date, there have been 429 COVID-19-related deaths in Livingston County. The table below shows the number of deaths in cases referred to LCHD per month.

	Dec. 2021	Jan. 2022	Feb. 2022
COVID-19 Related Deaths	63	49	19

## Vaccinations

LCHD continues to provide COVID-19 vaccinations and boosters to the public. Individuals interested in receiving a COVID-19 vaccine from LCHD can check our website for appointment availability: <https://bit.ly/3kGplij>. Individuals can also visit [www.vaccines.gov](http://www.vaccines.gov) to find other vaccination opportunities.

### Coverage Metrics

Vaccination rates in Livingston County continue to increase. At the time of this report, 67.1% of Livingston County residents have initiated their COVID-19 vaccination (i.e., received at least one dose of any COVID-19 vaccine). Additionally, 62.5% of residents are considered to be fully vaccinated with either one dose of Janssen or two doses of either the Moderna or Pfizer vaccines.

The table below shows the vaccination initiation metrics collected from the MDHHS COVID-19 Vaccine Dashboard as of March 4, 2022 (<https://bit.ly/39fQVxp>).

State of Michigan	Residents Vaccinated	Vaccination Coverage (% of Residents Vaccinated)
All Ages	6,156,278	65.4%
65+ years	1,554,847	88.1%
12-64 years	4,376,230	64.1%
5-11 years	224,671	27.2%

Livingston County	Residents Vaccinated	Vaccination Coverage (% of Residents Vaccinated)
All Ages	122,348	67.1%
65+ years	30,956	90.1%
12-64 years	86,631	65.2%
5-11 years	4,757	31.4%



## Looking to the Future

On February 16, MDHHS updated mask guidance for public settings to reflect that Michigan is entering a post-surge, recovery phase. MDHHS also laid out a plan for responding to COVID-19 during the coming months. Moving forward, the COVID-19 cycle will be defined by three key phases:

- **Response** - Local and state public health implement rapid response to a surge. The public may be advised to increase masking, testing and social distancing.
- **Recovery** - Post-surge. No immediate resurgence predicted. Local and state public health will monitor conditions that could lead to future surges.
- **Readiness** - A surge in cases is expected, with implications on severity of illness and hospital capacity. Increased communication to the public regarding possible new risks.

Currently, decreases in cases and hospitalizations and increased access to vaccines, testing, and treatment indicate that Michigan and Livingston County are entering a post-surge, recovery phase of the cycle. During this phase, MDHHS recommends that all individuals, regardless of vaccination status, practice universal masking in high-risk congregate settings including long-term care facilities, homeless shelters, correctional facilities, jails and health care facilities. All individuals, regardless of vaccination status, should also wear a mask during [isolation](#) and [quarantine](#) periods to stop further community spread of COVID-19. Schools and other organizations can use local conditions to guide mask policies for public meetings and large events.

LCHD supports this recommendation change and is optimistic about what it means for the future. The Response-Recovery-Readiness Cycle allows Livingston County residents and families to weigh their own risk for COVID-19 exposure and illness while determining which preventive measures to take. Factors such as age, medical conditions, and vaccination status are important considerations when deciding whether to mask in indoor settings. Moving forward, LCHD will continue to keep the community informed of local risk levels and give residents the knowledge they need to make informed decisions.

