

SHEAR WALL CONSTRUCTION



WALL TYPE ONE INTERIOR

5/8" GYPSUM BOARD ON ONE SIDE WITH NO. 4 SCREWS SPACED 8" AT EDGES SPACED 12" IN FIELD OR 1/2" NAILS SPACED 1" ON CENTER



WALL TYPE TWO INTERIOR

1/2" GYPSUM BOARD EACH SIDE WITH NO. 4 SCREWS SPACED 8" AT EDGES, 12" IN FIELD OR 1/2" NAILS SPACED 1" ON CENTER



WALL TYPE THREE EXTERIOR

1/4" OSB WOOD SHEATHING ON EXTERIOR SIDE WITH 1-1/2" X 16 GAGE STAPLES OR 8d NAILS AT 6" O.C. AT EDGES, 12" IN FIELD



WALL TYPE FOUR EXTERIOR-FRONT+REAR

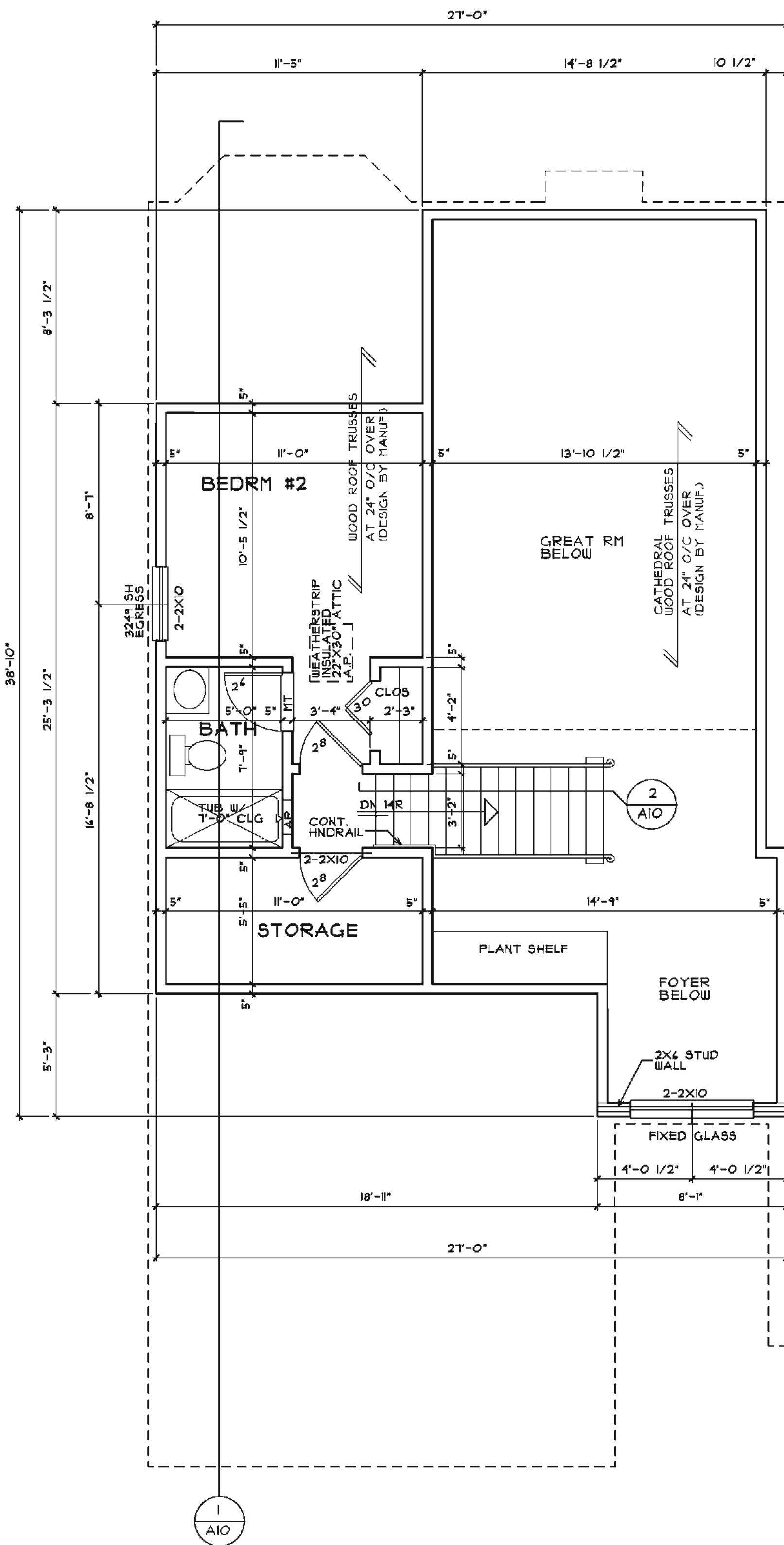
(SEE SECTION 2308.9.3.2, 2009 MICHIGAN BUILDING CODE FOR REFERENCE)
NAIL 1/4" EXT OSB SHEATHING TO FRAMING AND HEADER AT EACH ENDWALL OF WINDOW/DOOR OPENING W/8D COMMON NAILS-3" O/C AT EDGES+2" O/C IN FIELD.

PROVIDE 'SIMPSON' HDS ANCHOR TO DBL STUD AT EACH END OF EACH WALL SEGMENT SILL PLATE.

ATTACH METAL STRAP TO INSIDE FACE OF HEADER AND SIDE OF INNER STUDS W/UPLIFT CAPACITY OF 1,000 LBS.

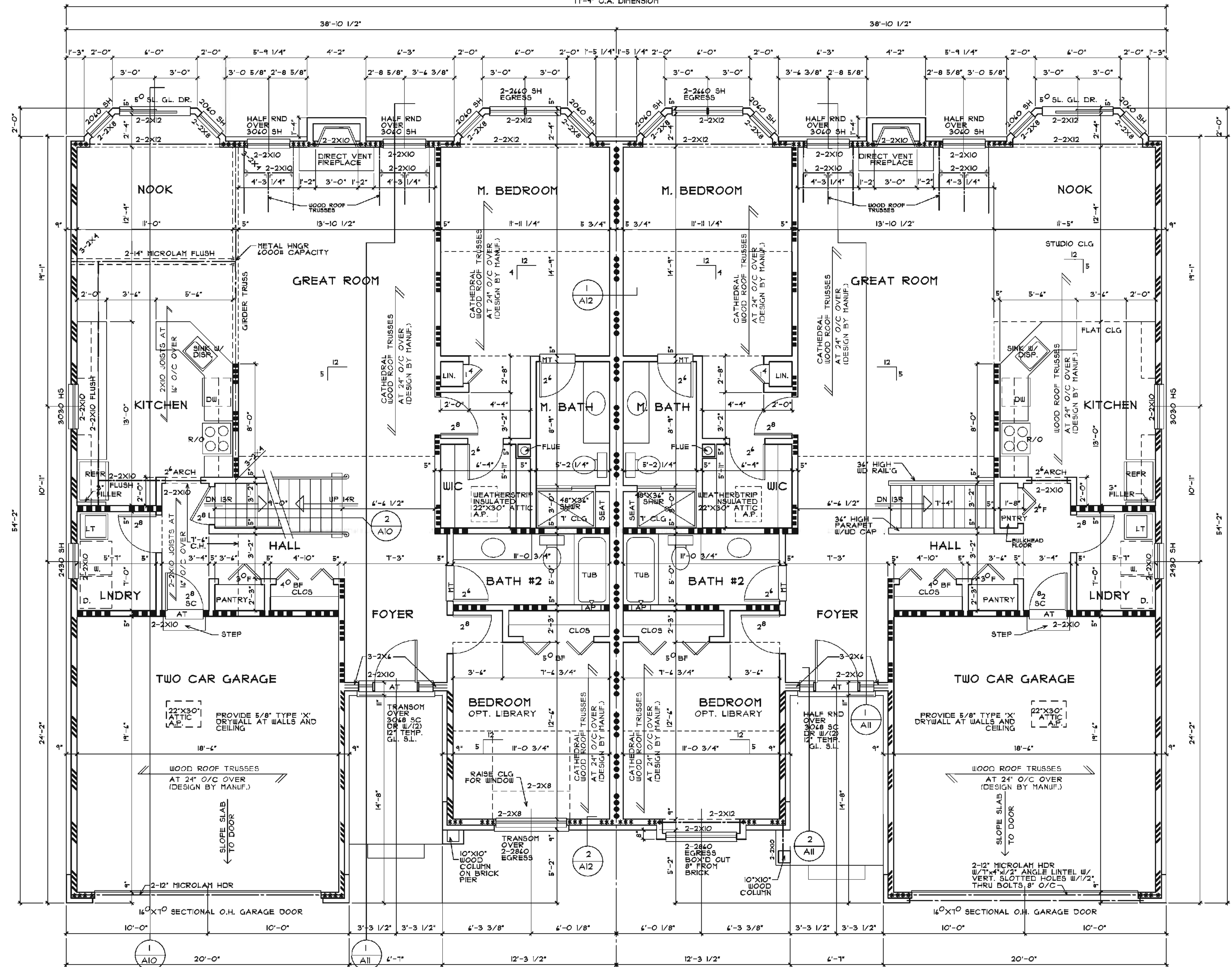
GENERAL NOTE

ANCHOR ALL SILL PLATES TO CONCRETE WITH 1/2" DIAMETER X 10" BOLTS AT 4 FEET ON CENTER AND WITHIN 2' OF ENDS OR 1/4" POWER DRIVEN PINS AT 16" ON CENTER



**UNIT B
SECOND FLOOR PLAN**

SCALE 1/4"=1'-0"



**UNIT B
FIRST FLOOR PLAN**

SCALE 1/4"=1'-0"

**UNIT A
FIRST FLOOR PLAN**

SCALE 1/4"=1'-0"

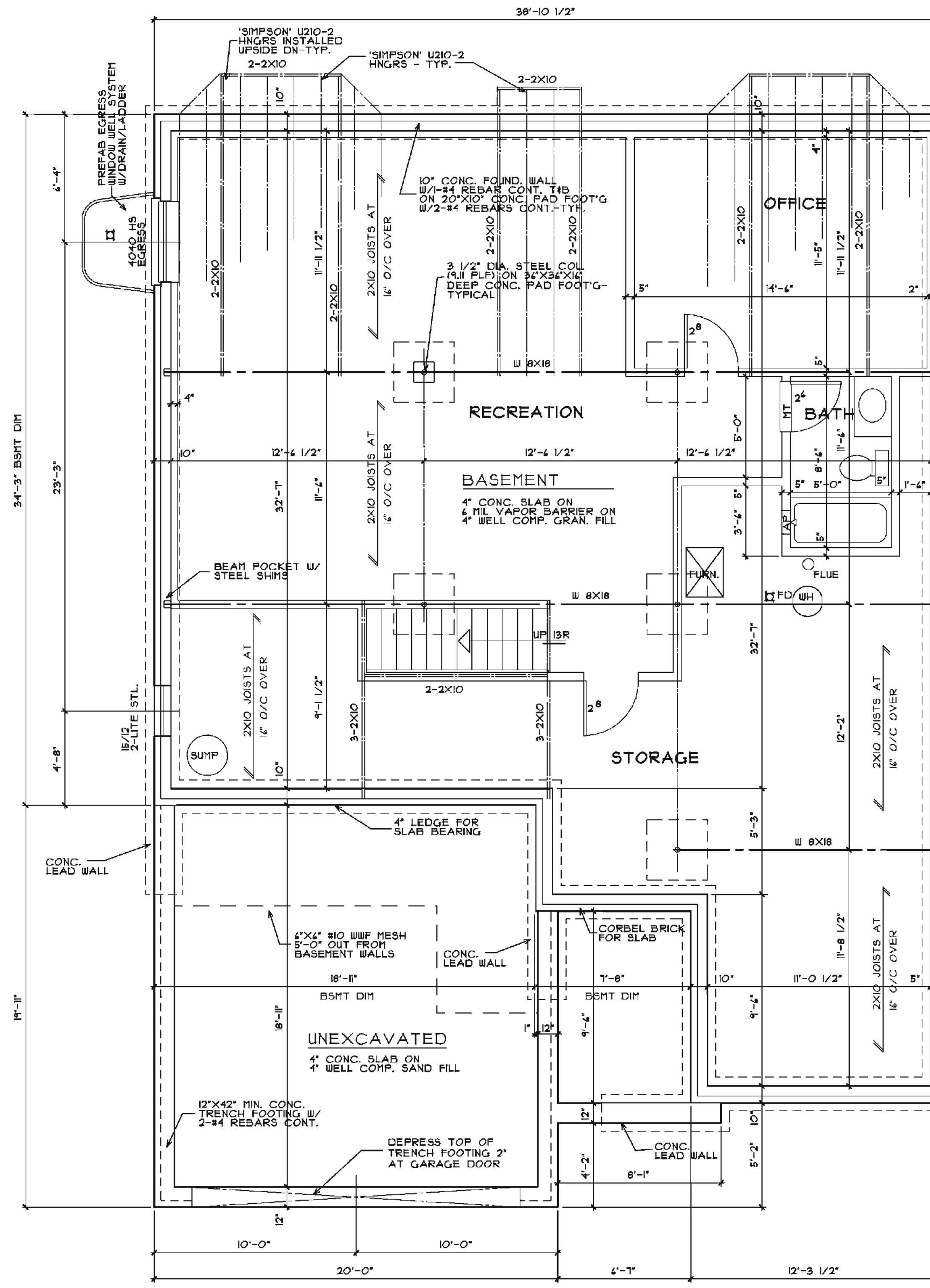
HILTON COVE
BRIGHTON TOWNSHIP, MICHIGAN

sheet
UNIT A/B
FLOOR PLANS

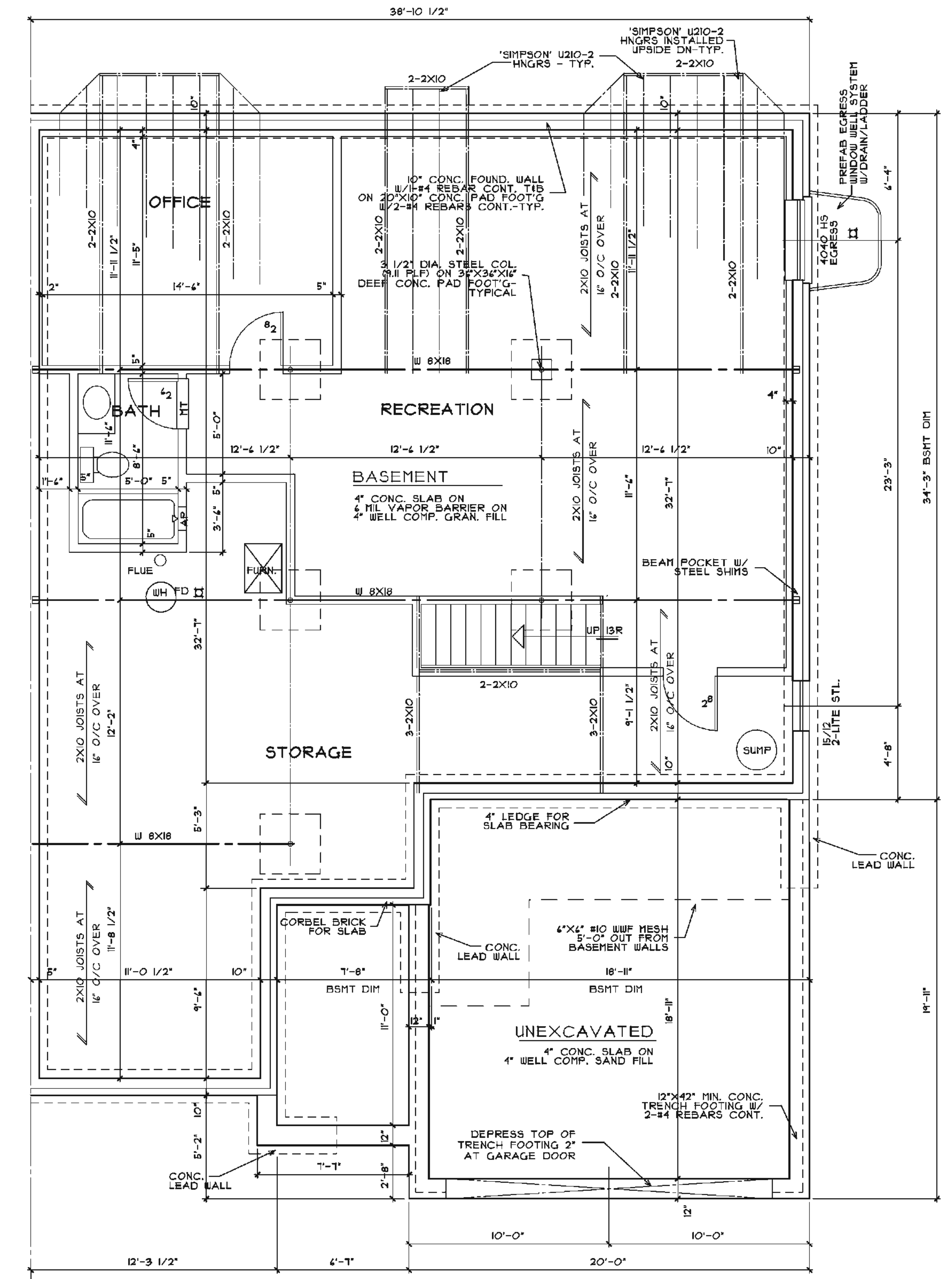
drawing
revisions

issue date

sheet
number



UNIT B
FINISHED BASEMENT PLAN
SCALE 1/4"=1'-0"



UNIT A
FINISHED BASEMENT PLAN
SCALE 1/4"=1'-0"

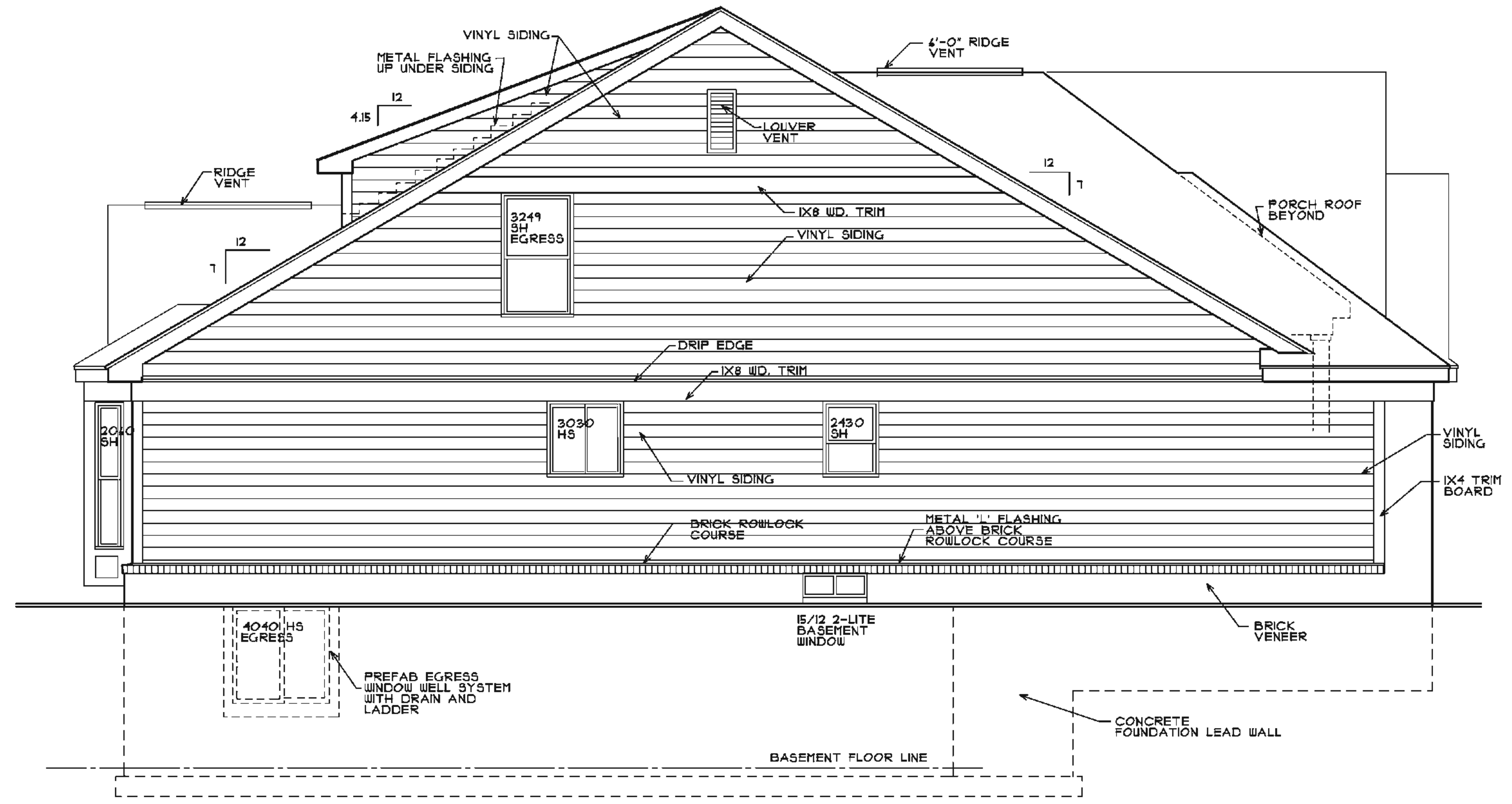
HILTON COVE
BRIGHTON TOWNSHIP, MICHIGAN

sheet
BASEMENT/FNDN
PLAN
FINISHED LOWER
PLANS

drawing
revisions

issue date

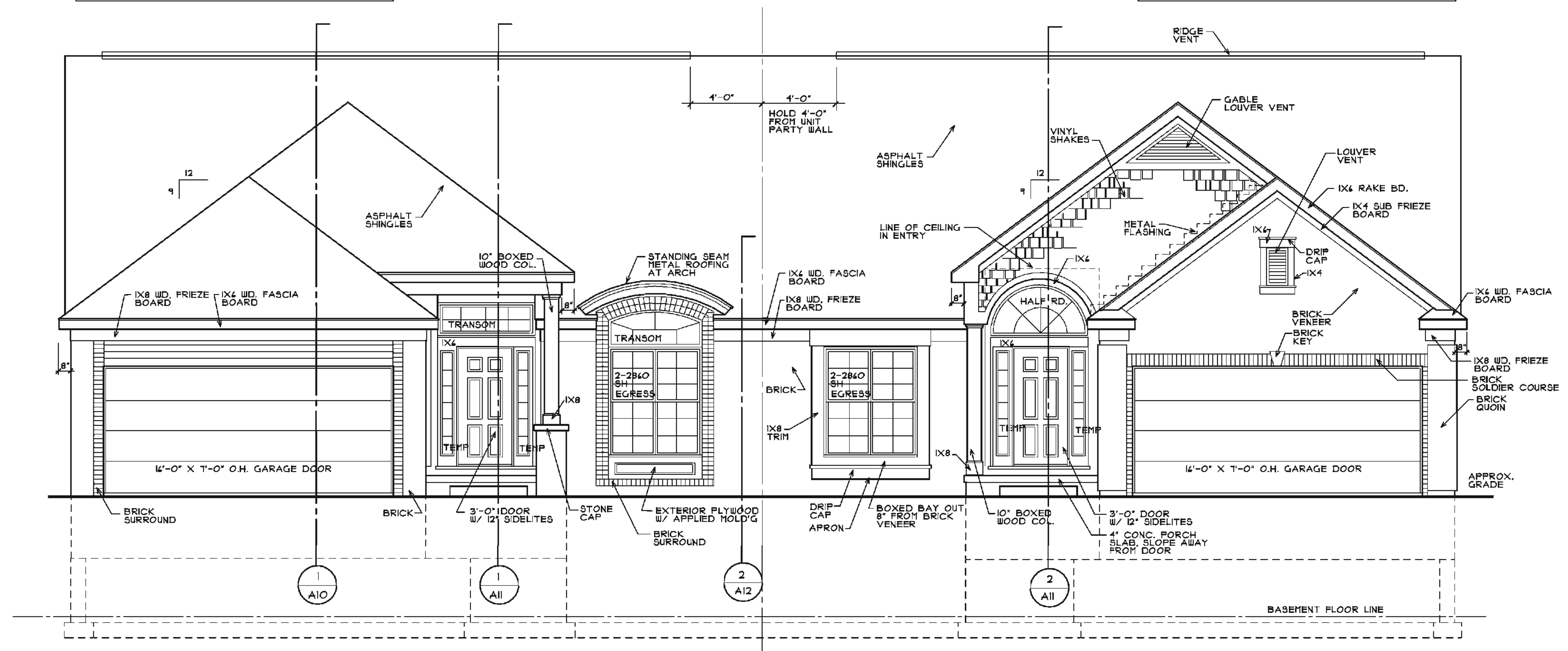
sheet
number



LEFT SIDE ELEVATION UNIT 'B'
SCALE 1/4" = 1'-0"

UNIT TYPE 'B'
ROOF VENTILATION CALCULATIONS:
2224 SQ.FT. ROOF AREA - 300 - 2 = 3.1 SQ.FT.
REQUIRED FREE AREA 533 SQ.IN. AT RIDGE
533 SQ.IN. AT SOFFIT
PROVIDED FREE AREA 608 SQ.IN. AT RIDGE
493 SQ.IN. AT SOFFIT

UNIT TYPE 'A'
ROOF VENTILATION CALCULATIONS:
1934 SQ.FT. ROOF AREA - 300 - 2 = 3.2 SQ.FT.
REQUIRED FREE AREA 444 SQ.IN. AT RIDGE
444 SQ.IN. AT SOFFIT
PROVIDED FREE AREA 704 SQ.IN. AT RIDGE
451 SQ.IN. AT SOFFIT



FRONT ELEVATION UNIT 'B'
SCALE 1/4" = 1'-0"

FRONT ELEVATION UNIT 'A'
SCALE 1/4" = 1'-0"

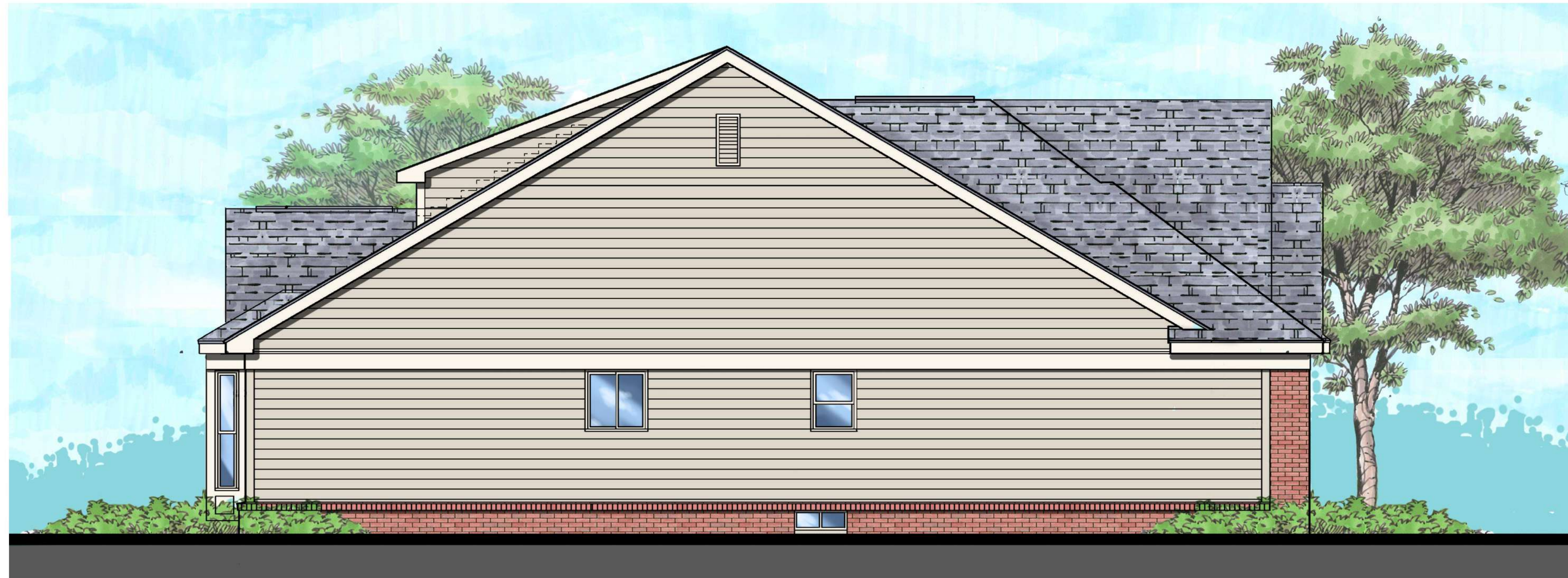
HILTON COVE
BRIGHTON TOWNSHIP, MICHIGAN

sheet
FRONT ELEV.
LEFT SIDE ELEV.
UNIT TYPE A & B

drawing
revisions

issue date

sheet
number



LEFT SIDE ELEVATION UNIT 'A'

SCALE 1/4" = 1'-0"



FRONT ELEVATION UNIT 'A'

SCALE 1/4" = 1'-0"

FRONT ELEVATION UNIT 'A'

SCALE 1/4" = 1'-0"

HILTON COVE
BRIGHTON TOWNSHIP, MICHIGAN

sheet

FRONT ELEV.
LEFT SIDE ELEV.

UNIT TYPE A & A

drawing
revisions

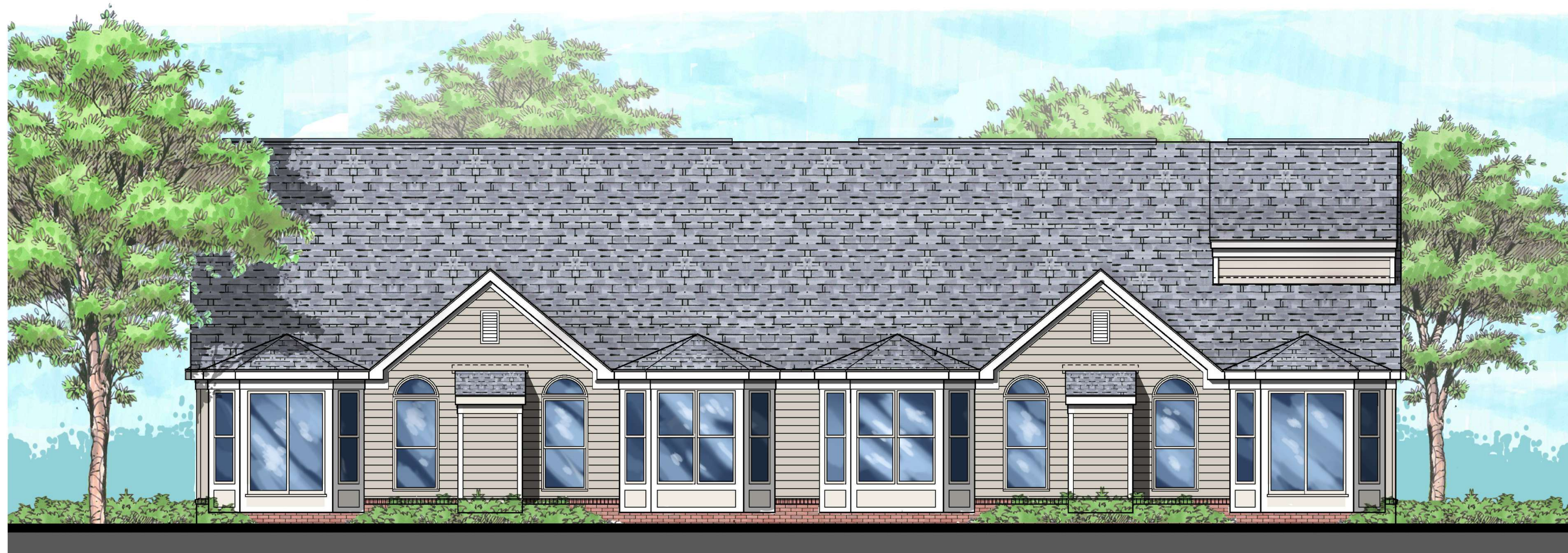
issue date

sheet
number



RIGHT SIDE ELEVATION UNIT TYPE 'A'

SCALE 1/4" = 1'-0"



REAR ELEVATION UNIT TYPE 'A'

SCALE 1/4" = 1'-0"

REAR ELEVATION UNIT TYPE 'A'

SCALE 1/4" = 1'-0"

HILTON COVE
BRIGHTON TOWNSHIP, MICHIGAN

sheet
REAR ELEV.
RIGHT SIDE ELEV.
UNIT TYPE A & A

drawing
revisions

issue date

sheet
number