



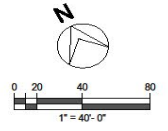
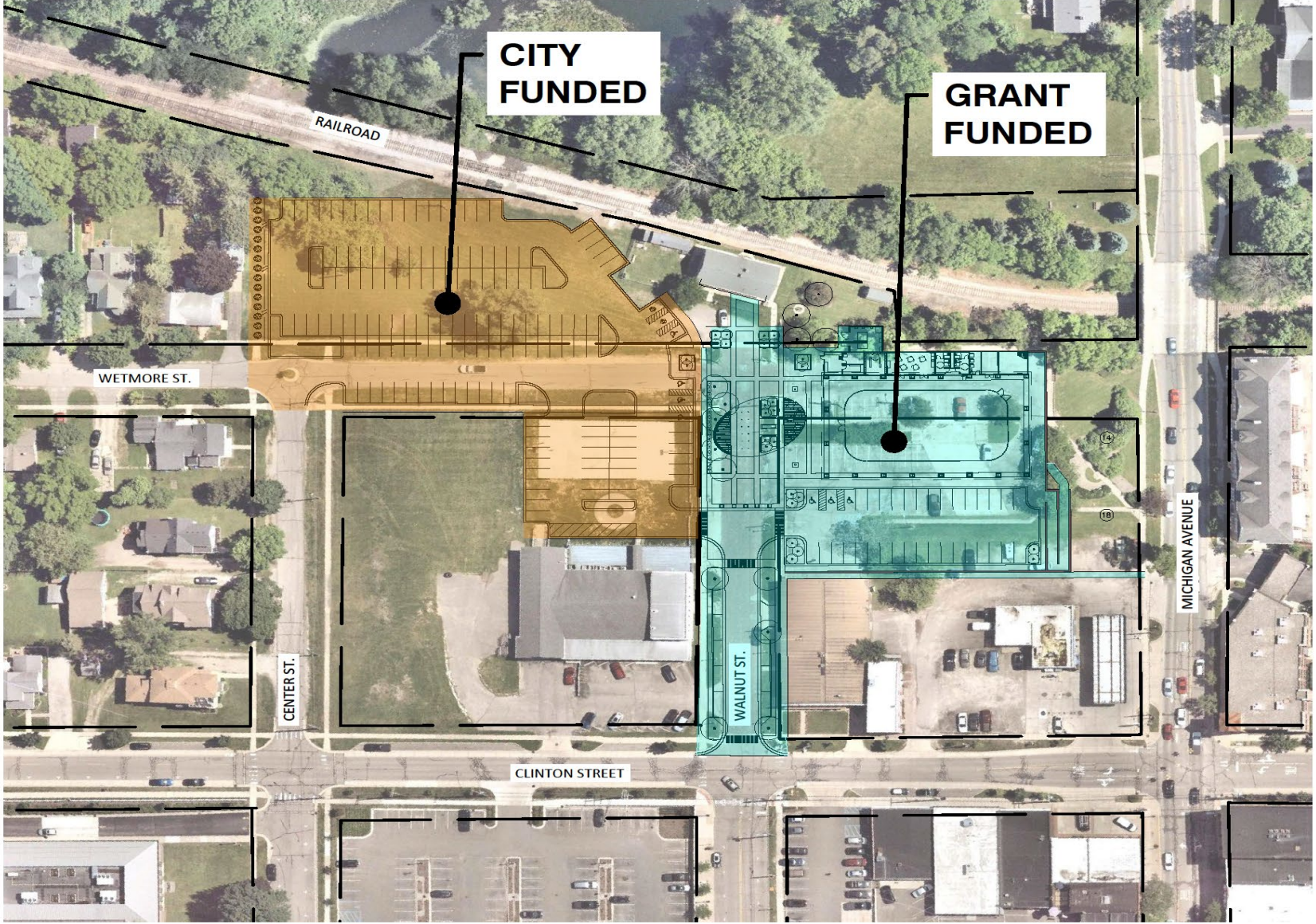
Fire and Ice

Depot District

The City of Howell

Stage One – Project Overview

- This project is two separate projects going on simultaneously. The first portion is based on two community public gathering grants that we submitted to provide a dynamic and needed outdoor public gathering space. This portion was for the 200 block of North Walnut and what is referred to as the Depot Lot. This section was purchased in 2009 and is in very poor condition. This lot is poorly lit, and the asphalt surface has crumbled to gravel. The concepts we provided for the grants are awarded based on the public space we are creating. This space and the additional parking project will provide two needs this community has sought for many decades.
- Area #1, labeled “Grant Funded,” includes Walnut Street streetscape, a public gathering area with a playable fountain, seating, and fire features. It also includes the existing Depot Lot improvements with a pavilion, ice rink, and 43 public parking spaces. The City of Howell received two grants totaling just under \$3 million dollars.
- Area #2, labeled “City Funded,” is part of a larger public parking improvement project that includes 159 additional spaces and several other parking improvements in various areas downtown. This portion includes the existing Wetmore Street right of way, previously owned excess state property, and Center Street right of way.



HRC
HUBBELL, ROTH & CLARK, INC.
CONSULTING ENGINEERS SINCE 1915
100 W. GRAND RIVER AVE.
HOWELL, MI 48843

PHONE: (517) 552-9199
WEB SITE: www.hrceng.com



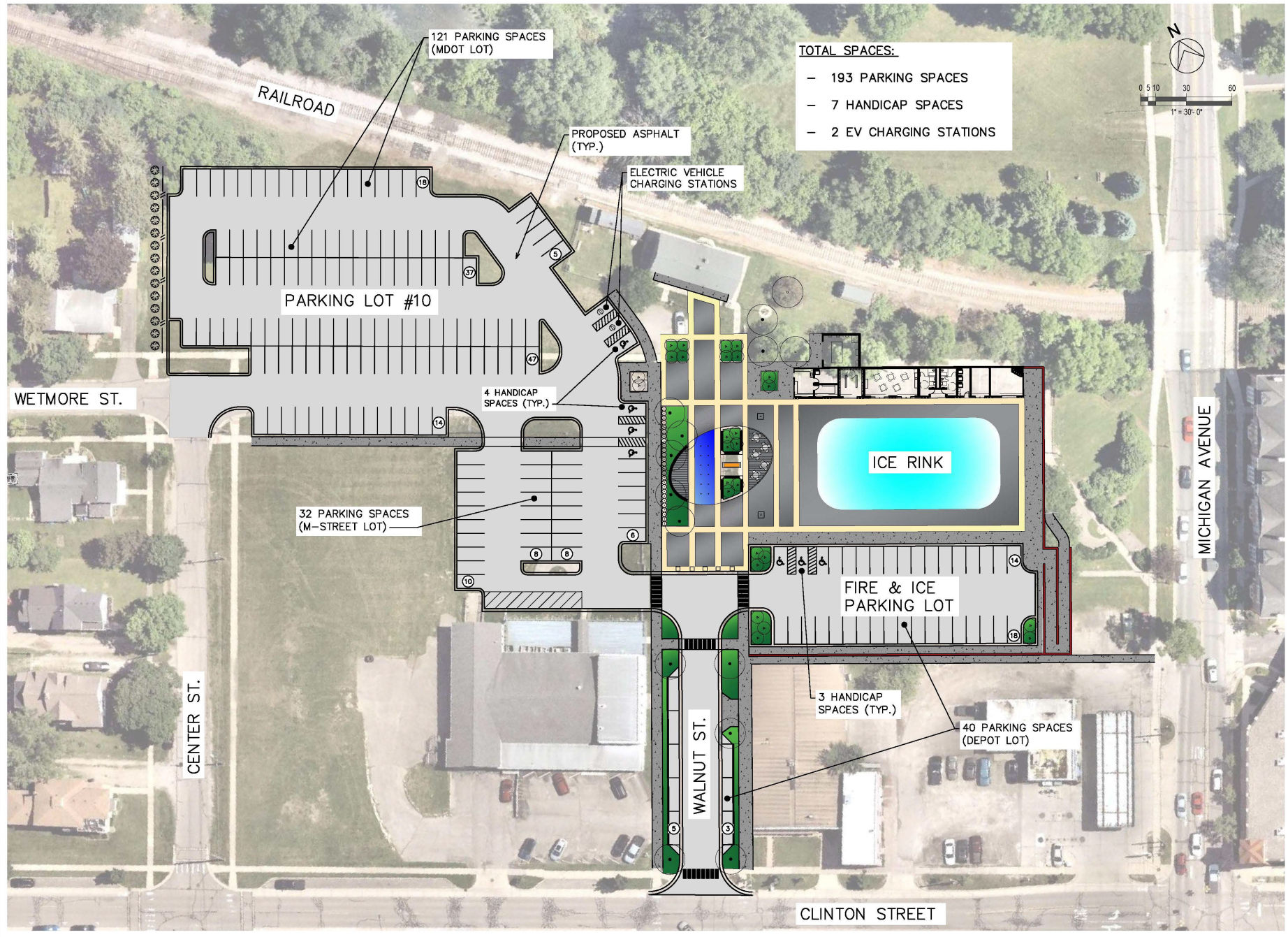
DATE	ADDITIONS AND/OR REVISIONS



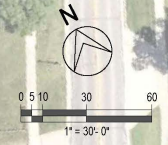
CITY OF HOWELL
FIRE & ICE
DEPOT DISTRICT

FUNDING PLAN

HRC JOB NO. 20240167	SCALE 1" = 40'
DATE June 2024	SHEET NO. F1 OF



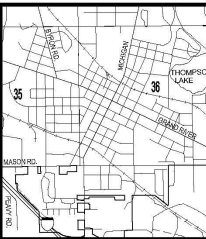
- TOTAL SPACES:**
- 193 PARKING SPACES
 - 7 HANDICAP SPACES
 - 2 EV CHARGING STATIONS



HRC
HUBBELL, ROTH & CLARK, INC.
 CONSULTING ENGINEERS SINCE 1915
 105 W. GRAND RIVER AVE.
 HOWELL, MI 48843
 PHONE: (517) 553-9199
 WEB SITE: www.hrcengr.com



DATE	ADDITIONS AND/OR REVISIONS
DESIGNED	DMJ
DRAWN	DMJ
CHECKED	ADM
APPROVED	



CITY OF HOWELL
**FIRE & ICE
 DEPOT DISTRICT**

OVERALL PLAN

HRC JOB NO. 20240167	SCALE 1" = 30'
DATE June 2024	SHEET NO. E2

Stage Two – Pavilion / Ice Rink

- As a testament to our commitment and vision, the City has successfully secured the necessary funding for this project. This achievement is a significant step towards our goal of incorporating a dynamic public gathering space to be used year-round by its residents. The project includes a portion of the existing lot as an ice rink located within a pavilion that can be used as an event space during the warmer months. This is a monumental improvement to a long-ago vision of having a downtown ice rink one day. While there have been several attempts to place an ice rink in various locations, those attempts fell short for one reason or another. This Council, however, has found the perfect location, secured funding, and is ready to proceed with the project. Staff has been working towards a design that will last longer than a lifetime, is easy to maintain, and offers a quality-of-life improvement like no other in Howell's history. Following are some of those amenities and their description:
 - The pavilion is 160 ft by 80 ft, and its color and design elements are pulled from the Historic Howell Depot.
 - Pavilion includes office/concessions, restroom facilities, maintenance room, lockers, and a rentable space.
 - High-end Audio-Visual system for year-round activation of events.
 - The ice rink will be 120ft by 60ft and located under the pavilion. It will be removable in the off-season so the pavilion can be used for various public events.
 - The rink will be equipped with boards and glass to manage access.
 - It will be glycol chilled and make ice if the temperature is below 50 degrees.
 - Usage of the ice will include open skate for residents and visitors with the potential for other activities.



Note Key

1. Pergola with table and chair sets beneath - overhead lighting
2. Pergola with bench wall beneath - overhead lighting
3. Fire Pit
4. Landscape bed with small multistem trees and bench wall
5. Landscape bed with small multistem trees
6. Curbed landscape bed
7. Water feature
8. New canopy trees
9. Existing tree
10. Concrete sidewalk
11. Moveable planters and/or bollards
12. Wall - refer to civil plan
13. Integrally colored concrete pavement with decorative scoring
14. Fire features
15. Hedge
16. Picnic tables
17. Moveable table and chair sets
18. Lawn
19. Cabinet for ice rink equipment







Stage Three – Walnut Street & Public Space

- Continuing with the theme of public gatherings, the City Council and staff have worked with our engineering and landscape consultants to design an incredible space for guests and residents to visit and enjoy year-round.
- Some of the features include:
 - Playable fountain that is programable with LED lights for visual appeal.
 - Three fire features for outdoor warming stations.
 - Artistic pergolas that will provide shade for our seating areas.
 - Will provide a beautiful frame that highlights the Historic Train Depot.
 - Several planting areas including a plaza with patterned and colored concrete.

Stage Three – Walnut
Public Gathering Space



Design Concepts



Chipman Table and Every Day Chairs set by Landscape Form



Bravo Bistro Table and Chairs set by Landscape Form



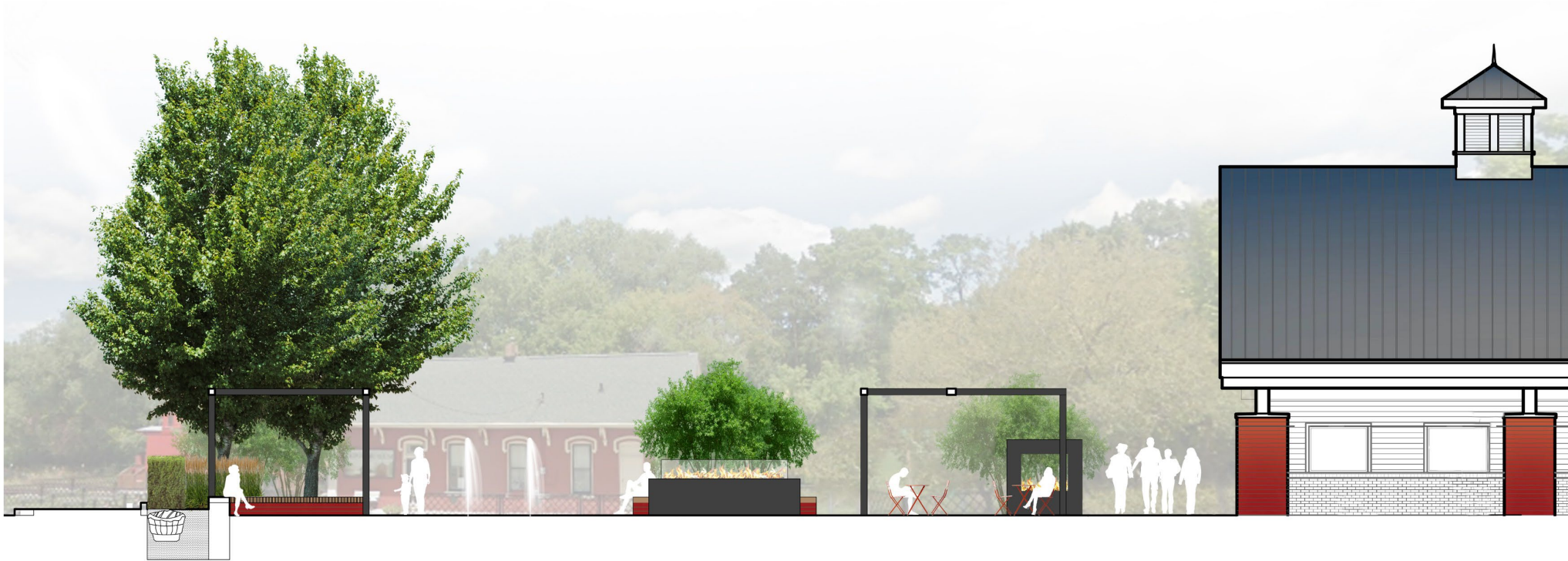
Movable bollards between fixed planters



Movable planters with casters by DeerStream Design - onlin







Howell Depot Plaza
Howell, MI

Schematic Design
Plaza Section

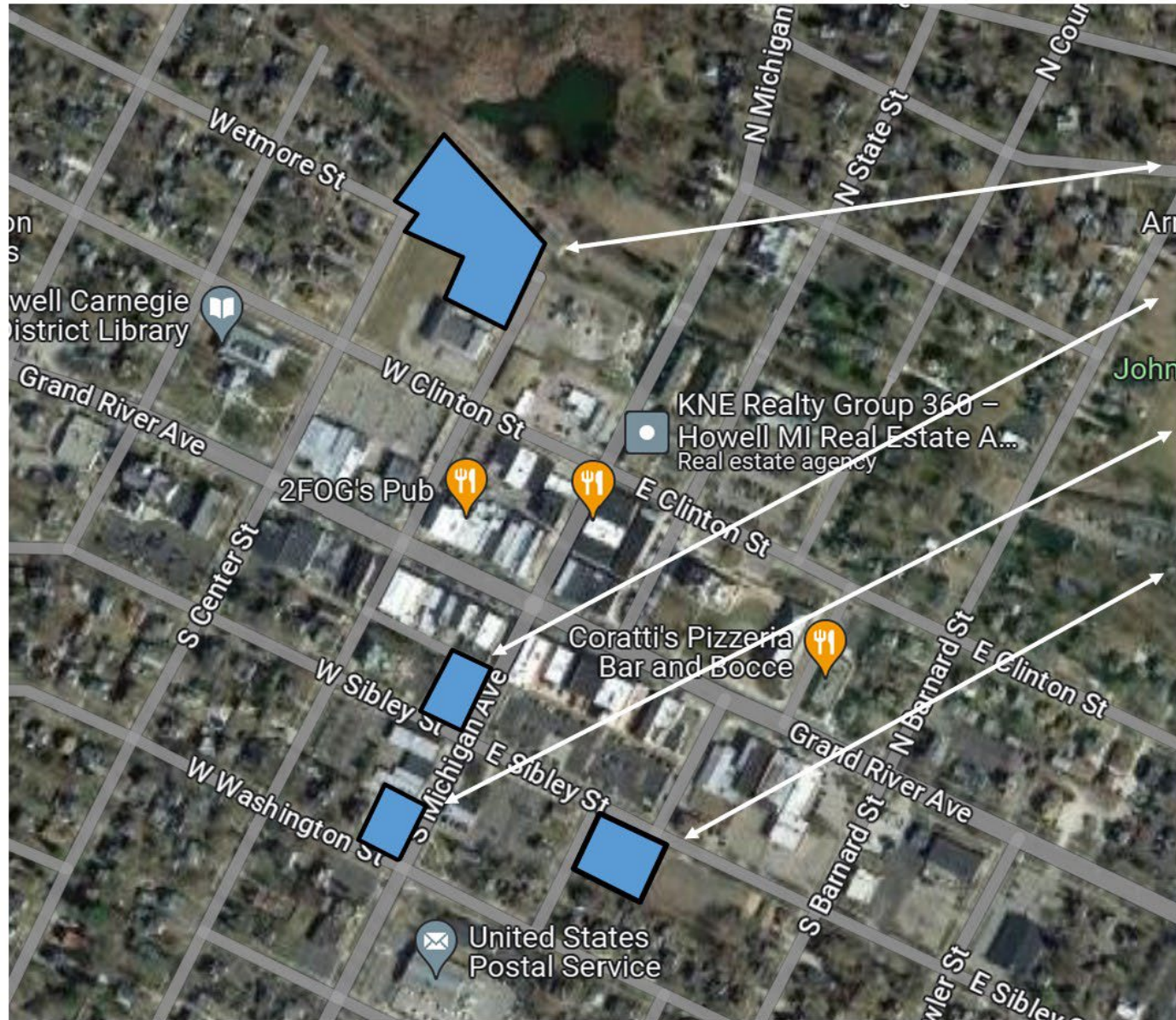
GRISSIM
METZ ASSOCIATES
ANDRIESE

Stage Four– Additional Parking

- The City has a crucial parking improvement project scheduled that will involve reconstructing and constructing several lots. This will be a significant step towards enhancing the parking situation in our area.
- These lots, including the additional lots within this project area, are:
 - Wetmore/ Center ROW and excess State property - 121 parking spots, 3 ADA and 2 EV.
 - Holkins Lumber leased lot – 32 spaces with 1 ADA.
 - Parking Lot #3 reconstruction - additional 4 to 8 spaces.
 - Snedcor Lot – in the process of acquiring through a donation agreement, could provide 26 spots.
 - Various improvements to other lots in the system.



Parking Improvement project



- Depot additional parking
- Lot 3 reconstruction
- New Snedikor Lot #11
- McCarthy Lot Improvements